



# ArTeacher

## MAEA Professional Development Institute



[www.miarted.org](http://www.miarted.org)



Issue No. 71

# 2015

---

Summer 2015 • Issue No. 71 • Quarterly Publication • Free to MAEA Members

The Michigan Art Education Association's mission is to promote  
quality visual arts education through leadership, service,  
and professional development.



**President**

Lani Warner-Yuen

**Past President**

Amy Marsh

**President-Elect**

Ren Hullender

**Vice President**

Adrienne DeMilner

**Executive Council**

Tanya Lockwood, *Treasurer*

Sharon Stratton, *Secretary*

Christopher Bruce, *Membership*

Cyndi Koppelman, *NAEA Delegate*

**Executive Secretary**

Jane Inhulsen

**Contact**

[www.miarted.org](http://www.miarted.org)

[inhul4@comcast.net](mailto:inhul4@comcast.net)

MAEA *ArTeacher* is published three times per year:

January, May, September, by the Michigan Art  
Education Association.

Publications are in newsletter format for Winter and Spring.  
The Winter publication is in macro-newsletter format with  
the full edition posted on our website. The Fall and Spring/  
Summer editions are published as full editions and posted on  
the website. Annual Membership includes membership and  
publications for both the National Art Education Association  
and the Michigan Art Education Association: \$95 [Active  
Membership], \$95 [Associate], \$65 [Retired], \$80 [first year  
Professional], \$45 [student], \$220 [Institutional].

Post Master send address changes to:

Jane Inhulsen  
8149 Grand Valley Drive  
Grand Blanc, MI 48439

Deadlines for submitting material to the MAEA *ArTeacher*:

*April 1 – Spring/Summer*

*July 1 – Fall*

*November 1 – Winter*

To submit please email articles to: [inhul4@comcast.net](mailto:inhul4@comcast.net).

Guidelines for articles posted on Publications tab  
at [www.miarted.org](http://www.miarted.org)

For Articles and Advertisers,  
contact: *Executive Secretary*; [inhul4@comcast.net](mailto:inhul4@comcast.net)

The Michigan Art Education Association is a non-profit  
professional art education association and does not  
discriminate on the basis of race, religion, age, sex, color,  
disability, sexual orientation or national or ethnic origin in  
following their policies, membership, meetings or any other  
events or activities.

Graphic Designer: Amy James

Editor: Jane Inhulsen


---






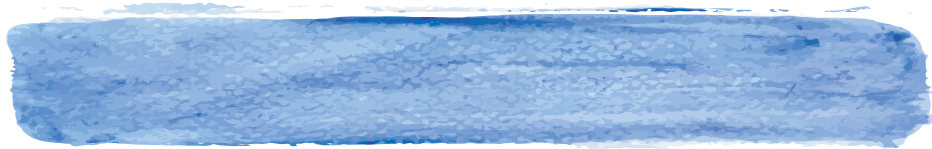


## Contents



President's Message .....	5
New Strategic Plan .....	7
New Orleans .....	8
Understanding Teachers' Perceived Level .....	9
Summer Professional Development .....	11
<i>Grand Valley State University</i> .....	11
Interlochen Registration Information .....	12
<i>Interlochen College of Creative Arts</i> .....	13
2015 MAEA Nomination Form .....	23
2015 MAEA Executive Council Members .....	24
Regional Map .....	26
Visual Arts Highlights .....	27





# Matisse Prints du Soleil



Lesson Plan  
for Grades K-12

**Harness the power of the sun  
to create exquisite prints!**

Henri Matisse survived cancer to find a renewed energy and expressionism in artworks he called "scissor paintings."

Drawing inspiration from Matisse's cut-paper shapes, students can use sunlight or an artificial light source to create color-saturated prints on fabric or paper.

[DickBlick.com/lesson-plans/matisse-prints-du-soleil](http://DickBlick.com/lesson-plans/matisse-prints-du-soleil)

**FREE** lesson plans and video workshops  
at [DickBlick.com/lesson-plans](http://DickBlick.com/lesson-plans).  
For students of all ages!

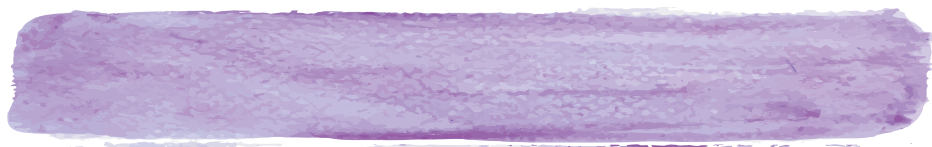


# BLICK®



[DickBlick.com](http://DickBlick.com) 800•447•8192

Visit  
[DickBlick.com/requests/bigbook](http://DickBlick.com/requests/bigbook)  
to request a FREE catalog!






## Being a Part of Change: Focusing on Members' Needs

...

Lani Warner-Yuen, President  
*laniwarner@hotmail.com*



The school year is winding down with all the end of year fanfare and the familiar feeling of a successful, yet exhausting, school year. I know many of us are preparing for our summer adventures and we may even be thinking about how we can grow professionally to improve our teaching practice or our own artistic skills. Summer Professional Development (PD) and Learning is now in our forethoughts.

The mission of the MAEA is to promote quality visual arts education through leadership, service, and professional development. The MAEA has a long and distinguished history of providing PD opportunities for our members. This tradition will continue with an exciting new approach. Not only will MAEA provide summer PD programming similar to our past events, but there will also be year around opportunities that are endorsed by the MAEA and taking place across the state.

The MAEA Council and Executive Board have worked to develop a new policy that allows the association to review existing professional development programs and partner with other arts institutions across our state to provide PD opportunities that meet our members' needs, where they live. This new policy can be found on the MAEA website under our governing documents.

In addition to the new policy expanding MAEA PD opportunities, the MAEA will be starting an email notification process of these opportunities. Other events from MAEA will also be distributed through the email process - information such as student state exhibition, a call for MAEA award nominations, and other developments.

MAEA has also gone through a process of rewriting and refocusing the work of the association through a new Strategic Plan. This Strategic Plan aligns our organization with the National Art Education Association as well as clearly lays out the next four years of goals, action steps, and implementation of the vision. The plan is part of focusing on members' needs, helping to grow the organization through leadership development, and creating transparency through active communication practices.

The PD events in this ArTeacher mark the beginning of some exciting changes within the MAEA. As you look through the summer offerings, I hope you find the workshops to be helpful and inspiring.



## Kendall Awards Scholarships


After seeing the artwork in the MYAF exhibit, Kendall College of Art and Design awarded \$53,000 in scholarships to 11 of our Visual Arts students who had work in the exhibit.



## New Strategic Plan Creates Opportunities for Members

• • •

Ren Hullender, President-Elect



The MAEA Executive Council, in a meeting at MSU on March 7, unanimously approved the association's Strategic Plan 2015-2019, after a year of research, discussion, and work sessions last September and January. Grounded in our mission "to promote quality art education through leadership, service, and professional development," and in alignment with the NAEA Strategic Vision goals, MAEA is committing to an ambitious revitalization of art education in Michigan through multiple initiatives. The four areas of the Strategic Plan are: Promotion and Advocacy, Organizational Vibrancy and Leadership Development, Community, and Research and Knowledge. The full Strategic Plan will be available on the MAEA website, however, I would like to briefly highlight a couple key components and encourage all of our members to identify an aspect in which to get involved.

By far, the primary concerns are the rebranding of MAEA and the promotion and marketing of art and art education to schools, communities, and businesses across the state. The MAEA Executive Council recommended investing in professional consultation and direction from an experienced marketing agency that supports non-profit organizations. Bidding is currently open.

Second, MAEA is launching a leadership program reflecting the national effort to foster teacher leadership, strengthen organizational leadership, and promote art leadership in education reform. Along with increased leadership sessions at the state conference, a yearly cohort program will be designed.

Third, the Executive Council recognized that new purposes, directions, and strategies in art education continue to emerge. To accommodate growing membership needs, MAEA is expanding professional development opportunities in flexible summer sessions, ongoing local sessions across the state, and possibly webinars, as well as conference presentations. More information is detailed elsewhere in this publication.

Consistent across all four areas of the Strategic Plan were two conversations. Most prevalent was how to restructure the website to reflect MAEA identity and purpose and provide more effective service and communication. The Executive Council recommended forming an oversight committee and enlisting the services of a professional web design firm.

The second most pervasive discussion revolved around how to engage all association members in volunteer efforts. Committees are being formed in all areas of the Strategic Plan; now is the time to get involved! I encourage everyone to contribute their time and expertise in developing and implementing the new initiatives. You will meet new colleagues and make new friends, learn and grow, and contribute meaningfully to art education in Michigan. This is the most exciting time in the history of education – especially art education. Get involved! Contact any Region Liaison, Executive Board, or Council members to share your interest in participating.



## New Orleans

...

Cyndi Koppelman  
*NAEA Delegate*



New Orleans, some call it "The Big Easy" or "The Crescent City", but it is known as the birthplace of jazz. It was the perfect location for the NAEA 2015 Convention because of the many art galleries, the abundant music, variety of food, and diverse cultures. Did you know there is a nickname that uses an abbreviated version for New Orleans and Louisiana? It is called NOLA.

The Michigan Art Education Association has many things of which to be proud. For the second year in a row, MAEA received the NAEA pARTners Award. The pARTners award is NAEA's way to recognize a state's growth in membership.

Two of MAEA's members received awards during the convention. Congratulations to Janine Campbell, National Middle Level Art Educator of the Year and Cindy Todd, Michigan's Art Educator of the Year!

The National Art Education Association has announced new professional learning opportunities for art teachers this fall. One is a Webinar, which is a virtual conference, and the other one is a new curriculum standards app. Also this year you will be able to receive college credit for attending the NAEA convention.

It was exciting to once again to participate in Delegates Assembly with delegates and state presidents who are all passionate about and committed to art education. The focus of the Delegates Assembly was on the five new NAEA position statements. The five statements were developed and drafted through the guidance of the NAEA Platform Working Group. Input was gathered during summer regional meetings for the position statements. The position statements are an ongoing process without an end. The new position statements are developed and moved forward annually. The discussion at Delegates Assembly resulted in consensus, recommendations made to the NAEA Board, and a vote on each position statement. All five position statements were voted on and approved. The five position statements are:

- #1 – Position Statement on the Importance of Visual Arts Supervision/Administrators in PreK-12 Education
- #2 – Position Statement on the Value of Collaborative Research
- #3 – Position Statement on Art Education and Social Justice
- #4 – Position Statement on Media Arts
- #5 – Position Statement on Instruction, Assessment and Student Learning in the Visual Arts


Mark your calendar - NAEA Convention 2016 will be held in Chicago, March 17-19!



# Understanding Teachers' Perceived Level of Responsibility for Student Learning

• • •

Tammi Browning  
*Multicultural Responsiveness*



Beliefs, expectations, and practices that are part of the school system are the guiding factors leading to teachers' sense of responsibility for student learning. Schools as sites of identity must become multicultural spaces where children feel valued and validated in their diverse ways of knowing and understanding the world. Eisner (1998) wrote: "All experience is the product of both the features of the world and the biography of the individual" (p. 34). As people age and gather more experiences in their lives, they acquire multiple social identities through memberships in both target and agent groups. Since people attend school for thirteen years of their most important developmental stages in life, the school system is the site for young people to draw conclusions about who they are, what society has in store for them, and what they can hope for. Diamond, Randolph, & Spillane (2004) refer to this as micropolitical contexts. The micropolitical context of a culturally competent school environment must include intergroup dialogue and collaboration between staff members, focusing on thoughtful curriculum planning and classroom instruction that acknowledges diversity in a positive light.

Eisner (1994) explained, "... the construction of meaning is not something that teachers do and pass on to students, but something that students do for themselves" (p. 9). A school culture is created by the students and adults who work with them. The school system is the medium in which the culture is cultivated. The elements within a school structure in which students can flourish, are referred to what Eisner (1994) described as matters of the mix. Matters of the mix involve the intentions that give direction to the enterprise, the structure that supports it, the curriculum that provides its content, the teaching with which that content is mediated, and the evaluation system that enables us to monitor and improve its operation. Matters of the mix are determined by the population to which the system serves.

We must understand, as educators we are an integral member of the population to which we serve. In order to accomplish an effective pedagogical construct, Damon (2008) insisted that the question of why academic knowledge is important must be a main component in the construction of pedagogy. It is the assumption that students will be engaged in learning when they understand why their participation is important. When students discover personal meaning in their work, they will apply their efforts with focus and imagination. It follows that school systems create a learning environment which encourages conversations about hopes, dreams, and aspirations. School activities should be linked with future life plans.

Since students come into the school system with their acquired sets of meanings constructed through personal life experiences, educators must attune themselves to these meaning constructs and develop matters of the mix that best fit the learning environment. If cultural values of the educator differ from those of their students, they must be open to understanding the why through listening and observation. In this way, construction of effective pedagogical practices that best fit the population can occur.

## References

- Damon, W. (Oct. 2008). The Moral North Star. *Educational Leadership*, 66(2), 8-12.
- Diamond, J. B., Randolph, A., & Spillane, J. P. (2004). Teachers' expectations and sense of responsibility for student learning: The importance of race, class, and organizational habitus. *Anthropology and Education Quarterly*, 35(1), 75-98. Retrieved from <http://search.proquest.com/docview/218137081?accountid=14584>
- Eisner, E. W. (1994). *Cognition and Curriculum Reconsidered*. New York, N.Y.: Teachers College Press.



ARTDEPT@GVSU.EDU

(616) 331-3486

1105 CALDER ART CENTER

ALLENDALE, MI 49401

**ART EDUCATION**

**ART HISTORY STUDIO ART:**

**CERAMICS GRAPHIC DESIGN**

**ILLUSTRATION PAINTING**

**JEWELRY / METALSMITHING**

**PRINTMAKING SCULPTURE**

**VISUAL STUDIES**

[WWW.GVSU.EDU/ART](http://WWW.GVSU.EDU/ART)





# Summer Professional Development

Grand Valley State University

• • •

1810 Calder Fine Arts Building • Allendale, MI • 49401



## **From Etch to Print and Adorn:**

### **Printmaking and Jewelry Using the Salt Water Etching Process..... July 27-28**

This workshop will explore the salt water etching process, simple printmaking technique, and simple jewelry folding and bending techniques. This etching process is non-toxic, easy to manage and clean up. Workshop participants will learn how to make the salt water etching system and learn how to use the system in their classroom. In addition, participants will etch a small copper plate which they will use to create a printed image and following that process will transform the copper plate, turning it into a simple pierced, folded, and bent pendant. Classes will be held from 9 a.m. - 5 p.m.

**Instructors:** Jim Bove, Associate Professor of Art,  
California University of Pennsylvania  
Renee Zettle-Sterling, Associate Professor of Art  
and Design, Grand Valley State University

**Registration Fee:** \$125.00 - Materials Provided

**SCECHs (optional):** \$15

**Both fees are due the first day of class (checks only).**

**Number of Workshop Participants:** 17

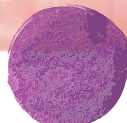
**Contact person:** Associate Professor, Renee Zettle-Sterling  
zettlesr@gvsu.edu

**To register:**

**Email Renee Zettle-Sterling at  
zettlesr@gvsu.edu**

To see the Grand Valley State University  
campus map, go to:

<https://www.gvsu.edu/homepage/files/pdf/maps/allendale.pdf>





## Interlochen Registration and Cancellation Information



### Registration

Interlochen College of Creative Arts offers a variety of education programs in the arts for adults 18 years or older. Participants must turn 18 years of age on or before the first day of the desired education program. Enrollment is limited and participants will be registered on a first-come, first-served basis. Early registration will help ensure your enrollment. A registration confirmation will be sent via email once registration and payment have been received and processed. Please complete one registration per participant per program enrolled. Tuition fees do not include housing and meals.

For campus housing rates and reservations, airport transportation rates and cafeteria meal plan options, please contact the Interlochen Stone Student Center at (231) 276-7570. Inform the hotel reservation agent which adult education program you are a participant in to obtain your group rate lodging discount.

### Cancellation Details

Cancellations made by the participant must be made in writing at least three weeks (21 days) prior to the start of the course or event and are subject to a cancellation fee based upon the following schedule. No tuition refunds will be given for any cancellation requests received after the cancellation deadline.

### Cancellation Fees

For courses and events \$250 and up, the cancellation fee is \$75.

For courses and events \$100-\$249, the cancellation fee is \$35.

For courses and events \$35-\$99, the cancellation fee is \$20.

### Refunds

A full tuition refund will be issued to all registered students if a course or event is cancelled by Interlochen College of Creative Arts. Registrants will be notified of any cancellations by phone or email in a timely manner.

All refunds shall be processed within 30 days or sooner after receiving written notification of a participant's need to cancel or Interlochen College of Creative Arts need to cancel.

**For further questions about program registrations, cancellations or refunds,  
please contact: [college@interlochen.org](mailto:college@interlochen.org) or call (231) 276-7387.**



**For more information and  
to register for classes go to:  
[Interlochen.org](http://Interlochen.org)**

# Summer Professional Development

## Interlochen College of Creative Arts

4000 Highway M-137 • Interlochen, MI • 49643  
Parking is onsite.



### Beginning Drawing..... June 1-2

Experience the magic of learning how to draw from nationally renowned artist and illustrator Glenn Wolff! In this course, first-time art students will learn the basic concepts and techniques needed to begin to draw. Class exercises exploring line, shape, form, and value combined with still life studies will comprise the course content. Essential techniques that Glenn has developed in his three-decade career as a fine artist and illustrator for publications including the *New York Times*, *Audubon*, the *Wall Street Journal*, and over 20 books including *It's Raining Frogs and Fishes* and *Flight of the Reindeer* will be shared with participants. All registrants will be provided with a suggested supply list, however some supplies are also available onsite. This class is intended for beginners or those who are looking to refresh their skills.

**Instructor: Glenn Wolff**  
visual artist and commercial illustrator,  
BFA Minneapolis College of Art and Design

**Registration Fee: \$175**  
**SCECHs Available: 10**

### Intermediate Drawing ..... June 3-5

This course is a continuation of the concepts and techniques covered in Beginning Drawing and/or is a course for those students who are looking to enhance their previously developed drawing skills. Concepts such as value, form and composition will be reviewed as students explore drawing from a live model, live performing musicians, and live birds as provided by Wings of Wonder Raptor Sanctuary ([wingsofwonder.org](http://wingsofwonder.org)). All registrants will be provided with a suggested supply list, however some supplies are also available onsite. This class is intended for those who have some drawing background and are looking for a more challenging experience.

**Instructor: Glenn Wolff**  
visual artist and commercial illustrator,  
BFA Minneapolis College of Art and Design

**Registration Fee: \$275**  
**SCECHs Available: 17**



### Children's Book Illustration ..... June 8-10

Discover the unique skills involved with illustrating books for children. Learn about character design and development, visual plot development, and how to describe the environment and atmosphere to evoke emotion. Participants will walk through the steps from thumbnail sketches to a least one finished spread or cover image and will learn some basics about working with publishers. Please bring a drawing pad, pencil, charcoal and a typewritten children's book manuscript to the workshop. Participants will also want to bring the medium of their choice for the finished art spread and some reference materials for characters and/or the environment. All skill levels welcome, however some drawing experience is required.

**Instructor: Barb Hranilovich**  
commercial illustrator  
and the author of *E is for Entrepreneur*

**Registration Fee: \$275**  
**SCECHs Available: 20**

### Building Your Career: Lattice From Staff to Freelance ..... June 10

Transition from staff to self-employment by setting yourself up for fast success! This workshop outlines five proven steps for finding a profitable, satisfying niche as a self-employed consultant, professional or creative, making the most of what and who you already know. Based on the principles of lateral career moves in *The Career Lattice* (McGraw Professional, 2012), which is included in the workshop fee, you will identify a 'sweet spot' and map a transition plan. You'll also develop and practice three types of pitches essential for winning transitional experiences and your first clients. All skill levels welcome. This workshop is perfect for:

- Experienced professionals and creatives, such as engineers, artists, designers, writers, editors, content developers and project managers
- Current staffers who want to transition to self employment for their next career stage
- Recent retirees who want to build a sustainable freelance income

**Instructor: Joanne Cleaver**  
author of *The Career Lattice*

**Registration Fee: \$85 – \$15 Textbook Fee**  
**SCECHs Available: 7**



### **Building Your Brand: Shameless Self-Promotion for Creatives ..... June 11**

Are you not sure what you need to do in order to promote yourself? Do you know what you want to do but just can't seem to get a system together? There are myriad affordable ways for individuals to promote their products and services but before you start, you need to be clear about what you are selling, to whom, and with what desired outcome. Join professional illustrator and artist, Barb Hranilovich in this one-day workshop in which you will learn tips and tricks from a 35+ year career veteran that will help you identify and hone your personal brand. Using group and individual exercises and directed conversation, Barb will help participants clarify their brand, message, and differential advantage and provide artists, entrepreneurs, creative persons or small business owners with tips and tools to get the world talking about you. All skill levels are welcome.

**Instructor:** Barb Hranilovich, fine artist, commercial  
illustrator and the author of *E is for Entrepreneur*

**Registration Fee:** \$75

**SCECHs Available:** 7



### **Hot Wax! Introduction to Encaustic Painting .. June 12**

Discover the beauty of creating layered paintings with hot wax and pigment through this one-day exploration into encaustic. The term encaustic comes from the Greek word meaning "to burn in" and it refers to the process of applying hot wax with pigment and resin onto an absorbent painting surface that is re-melted or "fused" with a heat gun to create a variety of effects. Unlike other painting mediums that go from wet to dry, this medium goes from a hot liquid to a solid in a matter of seconds allowing for a variety of layers to be added quickly. Versatile and fun for both beginners as well as experienced artists, encaustic painting also offers opportunities to embed items into your work. In this workshop, participants will begin with a demonstration of the techniques and tools and will be given safety tips. A practice board will be provided initially to assist participants in exploring the medium before committing to their own panel to create their own imagery. Participants are invited to bring their own materials to fuse into their works such as photographs, thin papers, drawings, fibers or other materials. All painting supplies and media will be provided. All skill levels are welcome and no previous experience is required.

**Instructor:** Barb Hranilovich, fine artist, commercial  
illustrator and the author of *E is for Entrepreneur*

**Registration Fee:** \$115 – **Materials Fee:** \$35

**SCECHs Available:** 6

### **Introduction to Blogging for Artists and Writers ..... June 12**

Blogging is so easy! If you are an artist or writer who wants to talk about your process and promote your work through a blog but you don't know how, then this one-day course will teach you everything you need to know to get started. Participants will develop a blog using Blogger (Google's free blogging program) and will choose a design for their blog, create a blog post that includes text, photos, video and sound, and will learn how to promote their blog via social media. Philip Hartigan will also share with participants his ten tips for successful blogging. Participants must have basic computer skills and may choose to work from their own laptop computer or work from a Mac laptop computer supplied for them during the workshop. Please note that if you are bringing your own laptop, for optimum operation, participants must have Windows XP/7 or Mac OSX 10.3.9 or higher for their operating system and must have the latest version of Google Chrome, which will be used for our web browser. Participants will be given instructions on how to register for their Blogger account in advance of the class. An IT Mac specialist will be on hand at the start of the course to provide basic support.

**Instructor:** Philip Hartigan, visual artist and blogger,  
adjunct faculty at Columbia College, Chicago

**Registration Fee:** \$75

**SCECHs Available:** 6



### **Crafting Great Content: Best Blogging Practices for Artists and Writers ..... June 13**

Now that you have a blog, what do you write? And, how do you write it in a way that attracts readers? Whatever the subject of your blog or your reason for starting one, this one-day course will help you hone your writing skills so that you can produce engaging and compelling content.

Via hands-on writing exercises, group discussion, and feedback, you will explore essential topics like managing your "idea flow," defining your audience, writing long posts and short posts, developing a conversational writing style, finding the right titles, and how to promote your blog posts. This course is suitable for people who already have an existing blog and feel confident in their computer skills. However, students who have taken the Introduction to Blogging for Artists and Writers class the preceding day are also welcome to sign-up for this more advanced class to build their skill set.

**Instructor:** Philip Hartigan, visual artist and blogger,  
adjunct faculty at Columbia College, Chicago

**Registration Fee:** \$75

**SCECHs Available:** 6





### **Advanced Techniques in Monoprinting ..... June 18-19**

Building on the basic techniques of monoprinting, this two-day course explores more complex processes to develop even richer one-of-a-kind prints. Topics covered include adding layers to your piece using stencils, chine colle (a collage technique), overprinting, printing images using hand-pressure, "ghost" prints, and large-scale monoprints.

Each participant will receive individual attention from artist Philip Hartigan to discover their own individual visual style. This course is suitable for people with some printmaking experience, and is an ideal continuation of the Beginning Monoprinting course that precedes on June 15-17.

**Instructor:** Philip Hartigan, visual artist and blogger,  
adjunct faculty at Columbia College Chicago

**Registration Fee:** \$175 – **Materials Fee:** \$25  
**SCECHs Available:** 12



### **Digital Camera Basics ..... June 22**

This workshop is for those who would like to learn the basics of their digital camera and how to apply traditional photography principles to a digital medium. Basics will include a visual vocabulary, manual camera controls, and output options for consistent results. Topics covered include: aperture/f-stop, shutter speed, proper exposure, focus versus auto focus, focal length, depth of field and white balance. No experience necessary; please bring your digital SLR camera and your camera manual.

**Instructor:** Rylan Steele, Assistant Professor of Art,  
Columbus State University,  
MEA University of Georgia at Athens

**Registration Fee:** \$85  
**SCECHs Available:** 6



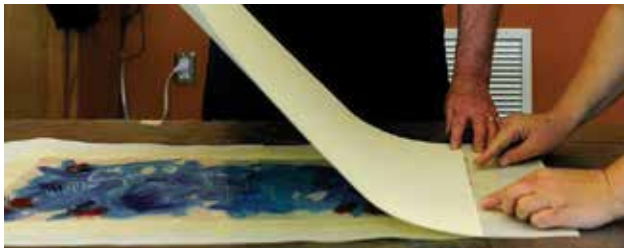
### **Live Your Art: Two-Day Creativity Incubator for Artists, Writers and Creative Entrepreneurs ..... June 22-23**

Do you crave creative companionship or mentorship in your artistic life? Maybe you need more tools, a new perspective, or dedicated time to consider the question of where and how creativity fits among your priorities. Live your art is a think-space, laboratory and meeting point for creatives in all disciplines, including anyone troubled by unexpressed creative impulses. It's an incubator for any idea, object, book or project that you want to make real, especially this year.

In this two-day retreat for writers, thinkers, artists, makers and creative entrepreneurs, instructor Holly Wren Spaulding will guide students through some essential conversations and strategies intended to help you break through blockages and persist on your creative path. Together you'll read, reflect, write, discuss, work independently, work in small groups, share struggles, swap solutions, and affirm your art by exploring some of the best ideas and methods Holly has found in the fields of poetry, dance, theater, visual arts, activism, teaching, performance, meditation and in collaboration with other artists and teachers. Workshop take-aways will include: a case for the creative habit; strategies for combating common barriers to the work; an outline and timeline for completing your specific, creative goal; and a personal or artist statement. This inspiring workshop welcomes artists of all disciplines and all skill levels.

**Instructor:** Holly Wren Spaulding, poet,  
award-winning author and teaching artist

**Registration Fee:** \$175  
**SCECHs Available:** 9



### **Painterly Printmaking: Beginning Monoprinting ..... June 15-17**

Monoprints are one-of-a-kind prints that are the most flexible and least intimidating of all the printmaking processes. Discover how you can create unique, painterly images in a matter of hours using many of the same techniques of watercolor and oil painting. To create an image, artist Philip Hartigan will show participants how to paint with brushes, rollers, drawing tools and more onto a hard, non-absorbent surface. When ready, dampened paper is registered onto the hard painted surface and run through a hand-cranked printing press. Whether you are an experienced artist looking to experiment with new techniques, or an absolute beginner, this course will help you develop at your own pace. It is also an ideal introduction to the Advanced Techniques in Monoprinting course that follows on June 18-19 for those looking to learn additional techniques. Individual guidance will be provided to each participant along with all supplies and media. All skill levels are welcome.

**Instructor:** Philip Hartigan, visual artist and blogger,  
adjunct faculty at Columbia College, Chicago

**Registration Fee:** \$275 – **Materials Fee:** \$25  
**SCECHs Available:** 19



### **Digital Landscape/Travel Photography.....June 23-25**

This workshop will help students to develop more dynamic compositions in their landscape and travel photographs. Class time will consist of presentations on successful travel photography techniques, manual camera operation, excursions to photograph on the grounds of Interlochen's campus and nearby locations, and demonstrations on techniques for digitally editing photographs. No experience necessary; please bring your digital SLR camera and your camera manual.

**Instructor:** Rylan Steele, Assistant Professor of Art,  
Columbus State University, MFA  
University of Georgia at Athens

**Registration Fee:** \$275

**SCECHs Available:** 20



### **Watercolor Printmaking: Japanese Woodblock.....July 6-8**

With the end result resembling a refined watercolor painting on paper, this workshop will offer participants a rare insight into the ancient Japanese printmaking process known as moku hanga, as taught by an award-winning artist in the field. Moku, meaning wood, and hanga, meaning print, is a traditional method which uses watercolor pigment, wood blocks, Japanese carving tools, rice paste and Japanese paper to create beautifully cultivated prints. The process is versatile and non-toxic and can be done entirely by hand without a printing press. Participants will learn how to transfer an image of their choosing onto a small wood block, how to carve their image out of the block using traditional Japanese tools, how to print a multi-color woodcut on Japanese paper using a tool called a baren, and how to apply the kento registration system. Information about the culture of Japan will also be shared as a part of the process. At the end of the workshop, a print exchange will occur offering each student the opportunity to go home with a portfolio from their classmates. All supplies and media will be provided by the instructor. All skill levels are welcome.

**Instructor:** Linda J. Beeman  
award-winning moku hanga artist

**Registration Fee:** \$275 – **Materials Fee:** \$35

**SCECHs Available:** 19



### **Jewelry Beadweaving: Russian Leaves .....June 26**

Beading is one of the world's oldest art forms and beadweaving is a beautiful off-loom technique that can be used to create anything from jewelry to wearables to home decor. In this workshop, participants will learn to create Russian Leaves from award-winning fiber artist and professional bead weaver, Jenny Schu. Russian Leaves are a trademark style for Jenny as she uses them both as the focal point in her beaded jewelry and as accents in her sculptural fine art work. In this full day workshop, participants will learn the twists and turns of weaving a beaded leaf, which can then be turned into earrings or other projects. All registrants will be provided with a needle, thread, and velvet pads or trays from which to bead. A suggested supply list will be made available to registrants prior to the workshop; however, the instructor will also have beads and materials available for purchase the day of the workshop. Some beadweaving experience is helpful for this workshop, but not necessary.

**Instructor:** Jenny Schu, visual artist,  
BFA University of Michigan

**Registration Fee:** \$65

**SCECHs Available:** 6



### **Plein Air Painting with Mark Mehaffey.....July 9-11**

Join nationally recognized, award-winning artist Mark Mehaffey for a three-day intensive in-studio boot camp and "open air" painting journey on the campus of Interlochen Center for the Arts. This workshop will begin with demonstrations in watercolor and acrylic paint and a crash course in the studio to review the fundamentals of color mixing, composition, and basic concepts. Participants will then apply their knowledge and hone their powers of observation as they capture the serene beauty of the natural landscape. After working "en plein air," participants will be invited back into the studio to discuss and fine tune their works. All skill levels are welcome. Participants may bring either pastels, watercolors, and/or acrylic paints. All registrants will be provided with a suggested supply list.

**Instructor:** Mark Mehaffey, nationally recognized painter,  
BFA Michigan State University

**Registration Fee:** \$275

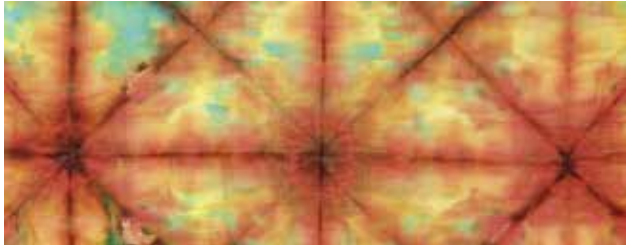
**SCECHs Available:** 15



### **Yarn Dyeing for Beginners and Beyond ..... July 13**

Have you ever admired the beautiful multi-colored yarns available at your local yarn shop? Express your creativity through hand-painting and dyeing two skeins of superwash yarn! Each student will have the opportunity to choose a multi-color combination that they love and pair it with a semi-solid color that coordinates or contrasts. The class will also cover topics such as choosing harmonious colors, measuring dye in both liquid and powder form, how to hand-paint yarn, how to dye yarn via immersion techniques, rinsing yarn, safety, compiling materials if you want to do dyeing at home, and other topics. At the end of the workshop, students will take with them two skeins of hand-dyed, hand-painted yarn, and class handouts. This class is perfect for people who have no previous experience with dyeing, or for those who love to dye and don't have space to do it in. All skill levels are welcome. This class is messy, so please wear old clothes and shoes. Yarn dyed in this class would be perfect to use for Sarah Peasley's knitting classes on July 20 and 21.

**Instructor: Rita Petteys, fiber artisan  
and owner of Yarn Hollow**  
**Registration Fee: \$70 – Materials Fee: \$25**  
**SCECHs Available: 6**



### **Dyeing and Painting on Silk Scarves ..... July 14**

Let the color fly on beautiful, smooth haboti silk scarves. Learn how to work with dye on silk in a variety of methods: painting, immersion dyeing, using resists to create patterns, layering dye colors one over the other for different effects. This is a class to let your creativity flow! The class topics will touch on color theory (layering color for the desired results), using resists for patterning, using the appropriate amount of dye to make sure the color is just as you want it.

After a short instruction period, we will dive right into dyeing scarves! Students will take home at least two haboti silk scarves and an instruction booklet. This class is appropriate for any level of fiber artist; no previous dyeing experience is required. All you need is an adventurous spirit! This class is messy, so please wear old clothes and shoes. Students will be provided at least two rectangular haboti silk scarves to take home with you, resists for use in class, dyes and chemicals. Students will also be able to purchase additional scarves in class.

**Instructor: Rita Petteys, fiber artisan  
and owner of Yarn Hollow**  
**Registration Fee: \$70 – Materials Fee: \$25**  
**SCECHs Available: 6**



### **Soft Pastel Workshop ..... July 16-18**

Participants will work with design elements and learn to divide the format to create balance and visual excitement to lead the viewer into the composition. Pastel techniques, color theory, and color mixing will be discussed and demonstrated. Participants will learn to see simple shapes and values to create stunning results. Each day will begin with technique demonstrations, group discussion and feedback on the progress of work to build upon and further develop compositions. This workshop is for artists of all skill levels; the instructor will provide personal attention to each participant, allowing each person to grow and develop their skills.

**Instructor: Janet Kohler, award-winning visual artist,  
MFA Eastern Michigan University**  
**Registration Fee: \$275**  
**SCECHs Available: 13**



### **Beginning Knitting ..... July 20**

Learn how to knit and purl while working on a hat and scarf in this six-hour introductory level class taught by nationally known knitting instructor, Sarah Peasley. Discussions regarding knitting needles, yarns, notions, and gauge will introduce students to the world of knitting. Participants will work both flat and in the round, learn to cast on, bind off, decrease, make buttonholes, pick up stitches, and weave in ends. Known for her patience and humor, and ability to instill confidence in her students, Sarah will provide all participants with a wide range of lasting skills. All registrants will be provided with a suggested supply list. This class is intended for beginners, or for those who are looking to refresh their skills.

**Instructor: Sarah Peasley, national handknitting  
instructor and pattern designer**  
**Registration Fee: \$275**  
**SCECHs Available: 6**





### **Advanced Techniques in Watercolor Printmaking ..... July 20-22**

Building on the basic techniques learned in the Watercolor Printmaking: Japanese Woodblock workshop, students will have the opportunity for further exploration of this art form with a focus on overcoming common mistakes to produce an acceptable quality print. Exploration of Japanese washi (paper), the use of various brushes, gradation printing (bokashi), embossing, and multiple kento and kento-ban (floating kento) registration will be covered. Each participant will receive individual attention from instructor Linda J. Beeman to help advance their knowledge and skill set of Japanese Woodblock printmaking (moku hanga). At the end of the workshop, a print exchange will occur offering each student the opportunity to go home with a portfolio from their classmates. This course is suitable for people with previous Japanese watercolor printmaking experience, or those who have previously taken Watercolor Printmaking: Japanese Woodblock with Ms. Beeman. A variety of washi (paper), carving tools, brushes, ink colors, and a woodblock provided. Please bring your baren from your previous course.

**Instructor: Linda J. Beeman**  
**award-winning moku hanga artist**

**Registration Fee: \$275 – Materials Fee: \$35**  
**SCECHs Available: 19**



### **Foundations of Tapestry Weaving ..... July 20-22**

Beginning with a good warp, this workshop covers basic tapestry techniques. Weaving instructor, Nancy McRay, will discuss with students how to design and finish a tapestry and will then work with students on the practice of slits, joins, diagonals and vertical curves. Students will leave the workshop with an understanding of the tapestry making process, some foundational skills, and a small, completed (or nearly completed) tapestry. Students must bring their own 10" wide tapestry loom, preferably one with a shedding device and a way to control tension, along with a tapestry fork. If new to weaving, participants may contact college@interlochen.org regarding tapestry loom sources. The supply fee will cover the cost of the warp and weft yarns that the instructor will provide for each student. All skill levels welcome.

**Instructor: Nancy McRay, visual artist,**  
**MFA University of Michigan**

**Registration Fee: \$275 – Materials Fee: \$20**  
**SCECHs Available: 18**



### **Introduction to Fair Isle Knitting ..... July 21**

The Fair Isle technique has been around for centuries, but can easily be learned within this 6-hour class taught by instructor Sarah Peasley. Begin by becoming fluent in both the English and Continental styles of knitting (holding the yarn in either your right or left hand). Practice knitting in the round with two colors (one in each hand) while making a colorful little bag, pouch, or bowl. Learn to read charts like a pro. Trap those pesky floats. Discover the beauty of corrugated ribbing. Hold your breath while you cut open a steek. All registrants will be provided with a suggested supply list, including one small homework swatch. This class is intended for advanced beginners who are comfortable with knitting and purling, or for more experienced knitters who are looking to brush up on their Fair Isle skills.

**Instructor: Sarah Peasley, national handknitting instructor  
and pattern designer**

**Registration Fee: \$75**  
**SCECHs Available: 6**



### **Collage Book:**

### **A Memoir Journal from Fragments ..... August 15**

In this multi-media writing and collaging workshop for storytellers, meaning-makers, archivists, poets, visual artists, and memoirists, we'll curate and craft a narrative document inspired by personal history, family lore, a specific experience, or question that needs answering. We'll work to discover unexpected solutions to what's unknown or missing about your story or idea by incorporating letters, translations, intentional silences, writings by others, and photographs or "found" imagery. Come prepared to learn creative strategies for taking an idea from concept to page, and leave with the first several pages of a project that will give shape and voice to your idea, experience or inspiration. This course is especially ideal for anyone with a desire to make an artful, narrative document in response to a loss, obsession or as a testament or legacy. Workshop take-aways will include: the history and practice of collage; incorporating white space, silence, gaps and the unknown into your document; the practice of free-writing, and how to use writing prompts to generate material; emphasis; and point of view. All skill levels are welcome.

**Instructor: Holly Wren Spaulding, poet,**  
**award-winning author and teaching artist**

**Registration Fee: \$95 – Materials Fee: \$15**  
**SCECHs Available: 6**





**Intermediate Acrylic  
Painting Workshop.....August 20-22**

In this studio-based workshop, participants will learn to explore imagery expressionistically (with emotion) using acrylic paint on paper and canvas. Subject matter will focus on still life, from floral to varied subject matter. Vivid, rich color methods of underpainting and layering of paint from washes to thick, buttery paint strokes (impasto) will be introduced. Drawing with paint to create a composition and composing with energy will also be taught. Paint application, color mixing and proper paper preparation will also be presented. Each morning the workshop will begin by painting on paper. Afternoon sessions will be dedicated to works on canvas to further explore technique and individual approaches. One morning may include a campus excursion to paint studies outside if weather permits. This class is intended for intermediate students, however all skill levels are welcome. All registrants will be provided with a suggested supply list.

**Instructor: Brenda J. Clark, visual artist,  
MFA Kent State University**  
**Registration Fee: \$275**  
**SCECHs Available: 18**



**Three-Hour Introduction to Coil Basketry..August 24**

In this three-hour introductory course, you will learn about the ancient art of coil basketry by creating your own colorful basket. Fiber artist Nancy McRay will teach you how to begin the bottom coil of your basket, attach new layers, control the shape and add additional stitches for texture. Students will also learn how to incorporate color patterns and be inspired by both traditional and contemporary artists working with this technique. You will be amazed as your basket takes shape before your eyes as you wrap, coil, and stitch with basic, everyday materials. All supplies will be provided by the instructor. All skill levels welcome. Class will be held from 9 a.m. – Noon.

**Instructor: Nancy McRay, visual artist,  
MFA University of Michigan**  
**Registration Fee: \$65 – Materials Fee: \$10**  
**SCECHs Available: 3**

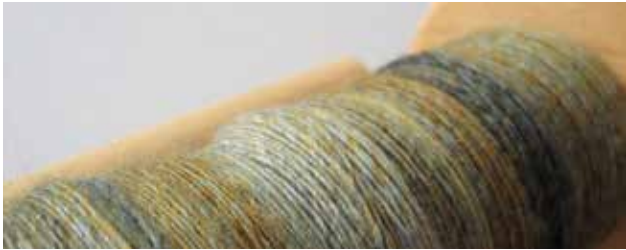


**Three-Hour Additional Techniques  
in Coil Basketry.....August 24**

This course is a continuation of the concepts and techniques covered in the Three-Hour Introduction to Coil Basketry workshop and/or is a course for those students who are looking to enhance their previously developed coil basketry skills. Further guidance and additional concepts will be provided by the instructor. All supplies will be provided by the instructor. Class will be held from 2-5 p.m.

**Instructor: Nancy McRay, visual artist  
MFA University of Michigan**  
**Registration Fee: \$65 – Materials Fee: \$10**  
**SCECHs Available: 3**





### **Beginning Spinning on the Wheel.....August 25**

In this workshop, students will learn all about the marvelous craft of spinning yarn on a spinning wheel. Instructor Amy Tyler will introduce students to the parts of the spinning wheel and will provide the basics on how it works. Then, students will study the process of spinning "singles" from wool roving, will practice how to draft fibers, and will learn how twisting turns fiber into yarn. Plying singles together for a 2-ply yarn will also be practiced. Basics of preparing fleece for spinning, care of your wheel, and finishing yarns will also be discussed. Everyone will leave the workshop with a better knowledge of their wheel and a completed skein of their own handspun yarn. Participants must supply their own spinning wheel in good working order with a least one bobbin. The instructor will provide each student with samples for examination, notebook with handouts, fibers for spinning, and sundry supplies. All skill levels welcome and no experience necessary.

**Instructor: Amy Tyler, Stone Sock Fibers**

**Registration Fee: \$75 – Materials Fee: \$20**

**SCECHs Available: 6**

### **Three-Hour Watercolor Workshop..... August 26**

Through the exploration of small studies, this workshop will provide absolute beginners as well as skilled artists looking to brush up on their approach to watercolor an opportunity to explore their own creativity, to study color and the fluidity of the medium, and to walk away with two small finished works. Participants will also learn how to access their creative side and how to organize their tools and supplies for greater clarity. Using a limited color palette, participants will develop their first painting by exploring negative shapes and layering techniques using transparent glazes. In the second painting, participants will add salt and splatter techniques to create greater depth and texture in their work. A group critique will also help students learn how to make their paintings stronger through the use of composition and color. Each participant will receive a packet of two 5" x 7" watercolor sheets with envelopes. All paints, brushes, paper water buckets, support boards and paper towels will be supplied by the instructor. Everyone will leave the workshop with two finished pieces.

**Instructor: Susan Lingg**

**Registration Fee: \$60 – Materials Fee: \$10**

**SCECHs Available: 3**



## Check out our **NEW** website

# eTriarco.com

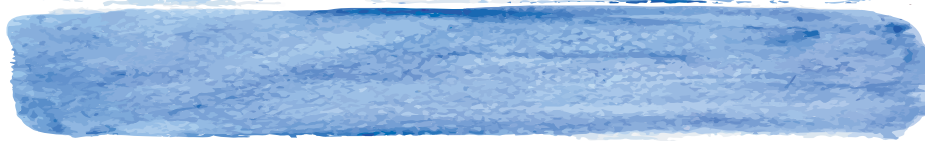
**Contact Triarco®  
for your FREE Catalog!**

**1-800-328-3360**

**eTriarco.com**

Follow us for  
refreshing ideas  
and great art projects!

Our New Address: 9900 13th Ave. N., Suite 1015  
Plymouth, MN 55441-9235



**Engage your creativity.  
Empower your students.  
Transform your career.**



**Earn your master's in Art Education online while you teach.**

Join like-minded educators who love teaching art.  
Empower yourself with advanced skills in research  
and practice. Take control of the important decisions  
that affect you, your students, and your career.

**Gwen Frostic School of Art**  
[wmich.edu/online/arteducation](http://wmich.edu/online/arteducation)

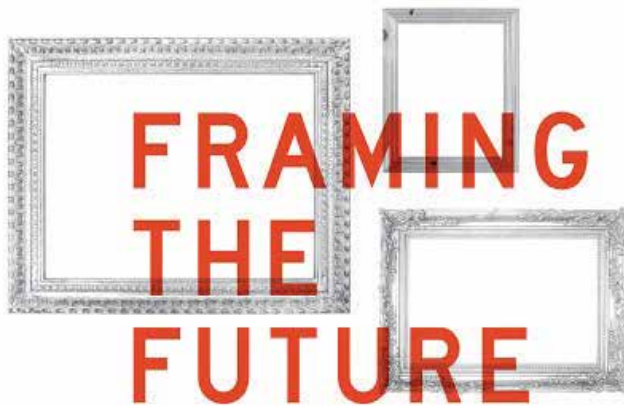
MYAF/MAEA High School Exhibit





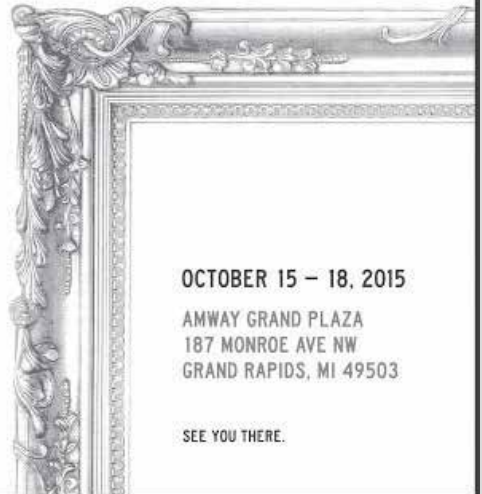


# *Save the Date*



MAEA FALL CONFERENCE 2015

Fostering a sense of community while providing the highest quality professional development and showcasing the strength and talents of our members



OCTOBER 15 – 18, 2015

AMWAY GRAND PLAZA  
187 MONROE AVE NW  
GRAND RAPIDS, MI 49503

SEE YOU THERE.





## 2015 MAEA Election Year MAEA Nominations Form (rev. 4-2015)

---

### MAEA is seeking nominations for the positions of:

- **President-Elect** (six-year term, 1/2016 - 1/2022: two years each as President-Elect, President, and Past President, two years as NAEA Delegate to concur with 2<sup>nd</sup> year as President, 1<sup>st</sup> year as Past-President)
- **Vice President** (two-year term, 1/2016 - 1/2018)
- **Recording Secretary** (two-year term, 1/2016 - 1/2018)
- **Membership Secretary** (two-year term, 1/2016 - 1/2018)
- **Treasurer** (two-year term, 1/2016 - 1/2018)
- **NAEA Delegate** (two-year term, 1/2016 - 1/2018)

For more information on these positions go to: [www.miarted.org](http://www.miarted.org) click on **Governing Documents**, then **Job Descriptions/Job Qualifications**.

If you are interested in running for office, please fill out the form below and return it to the Election Committee member listed below. Ballot is finalized at the Annual Business Meeting at the Annual Fall Conference.

Amy Marsh, Past-President  
amyelizabethvp@gmail.com  
(616) 540-7921  
7500 Alaska Ridge SE  
Alto, MI 49302

*Cut on the dotted line.*

-----  
Name: \_\_\_\_\_ Region # \_\_\_\_\_

MAEA/NAEA Membership # \_\_\_\_\_ Home Phone (     ) \_\_\_\_\_

Email Address: \_\_\_\_\_

Mailing Address: \_\_\_\_\_

City, State and Zip Code: \_\_\_\_\_

### Please accept my nomination for the following position:

_____ President-Elect	_____ Vice President	_____ NAEA Delegate
_____ Treasurer	_____ Recording Secretary	_____ Membership Secretary

*Please attach a brief biography of 200 words or less that describes your experience in MAEA, as well as your accomplishments in arts education. Share your vision for the future of MAEA. Please send your bio and a photo of yourself, in the .jpg format to: [inhul4@comcast.net](mailto:inhul4@comcast.net).*

## 2015 MAEA Executive Council Members

### President

Lani Warner-Yuen  
[laniwarn@hotmail.com](mailto:laniwarn@hotmail.com)

### Past President

Amy Marsh  
[amyelizabethvp@gmail.com](mailto:amyelizabethvp@gmail.com)

### President Elect

Ren Hullender  
[hulle1r@cmich.edu](mailto:hulle1r@cmich.edu)

### Vice President

Adrienne DeMilner  
[adrienne616@gmail.com](mailto:adrienne616@gmail.com)

### NAEA Delegate

Amy Marsh  
[amyelizabethvp@gmail.com](mailto:amyelizabethvp@gmail.com)

### NAEA Delegate

Cyndi Koppleman  
[koppelm@salineschools.org](mailto:koppelm@salineschools.org)

### Membership Secretary

Christopher Bruce  
[bruceachristopher@gmail.com](mailto:bruceachristopher@gmail.com)

### Recording Secretary

Sharon Stratton  
[strattonsm@aol.com](mailto:strattonsm@aol.com)

### Treasurer

Tanya Lockwood  
[tlockwood@nvps.net](mailto:tlockwood@nvps.net)

### Executive Secretary

Jane Inhulsen  
[inhul4@comcast.net](mailto:inhul4@comcast.net)

### Administrative Supervision

Stefanie Borysiak  
[stefanie.lapenta@farmington.k12.mi.us](mailto:stefanie.lapenta@farmington.k12.mi.us)

### Advocacy Chair

Open Position

### Art Acquisitions, Vendor Chair

Julius Kusey

### Vendor Co-Chair

Julia Tomaro  
[juliatomaro@att.net](mailto:juliatomaro@att.net)

### MEA Art Acquisitions

Julius Kusey

### Awards Chair

Open Position

### 2015 Conference Co-Chair

Christopher Bruce  
[bruceachristopher@gmail.com](mailto:bruceachristopher@gmail.com)

### 2015 Conference Co-Chair

Sharon Stratton  
[strattonsm@aol.com](mailto:strattonsm@aol.com)

### 2015 Conference Co-Chair

Tricia Erickson  
[terickson@nvps.net](mailto:terickson@nvps.net)

### Elementary Division

Ashley LaVoy  
[aslick35@gmail.com](mailto:aslick35@gmail.com)

### Elementary Division

Denise Barrett  
[DeniseBarrett@wlcsl.org](mailto:DeniseBarrett@wlcsl.org)

### Middle School Division

Michelle Reile  
[michelle.reile@gmail.com](mailto:michelle.reile@gmail.com)

### Middle School Division

Michael Orlando  
[mchlortho@yahoo.com](mailto:mchlortho@yahoo.com)

### Secondary Division

Le Tran  
[Le.Tran@kentwoodps.org](mailto:Le.Tran@kentwoodps.org)

### Higher Ed. Division

Linda Tyson  
[tyson@oakland.edu](mailto:tyson@oakland.edu)

### MAEA Summer PD

Melissa Hronkin  
[m\\_hronkin@hotmail.com](mailto:m_hronkin@hotmail.com)

### MAEA Summer PD

Le Tran  
[Le.Tran@kentwoodps.org](mailto:Le.Tran@kentwoodps.org)

### MAEA Museum Division

Jon Carfagno  
[jcarfagno@artmuseumgr.org](mailto:jcarfagno@artmuseumgr.org)

### Retired Division

Maureen Roslanic  
[mroslanic@yahoo.com](mailto:mroslanic@yahoo.com)

### Student Division

Eric Tracy  
[tracye@ferris.edu](mailto:tracye@ferris.edu)

### Student Division

Nicole Magness-Dean  
[magne1nc@cmich.edu](mailto:magne1nc@cmich.edu)

### Student Division

Jillian Sullivan  
[sullij15fwd@gmail.com](mailto:sullij15fwd@gmail.com)

### Student Mentorship

Open Position

### Student Sponsorship

William Charland  
[william.charland@wmich.edu](mailto:william.charland@wmich.edu)

### Graphic Designer

Amy James  
[amym.james@yahoo.com](mailto:amym.james@yahoo.com)

### Digital Editor

Betsy (Elizabeth) Foster  
[EALFOSTER@yahoo.com](mailto:EALFOSTER@yahoo.com)

### Copy Editor

Harvey Goldstein  
[hgold2843@comcast.net](mailto:hgold2843@comcast.net)

### Historian

Open Position

### MDE Exhibit

Lauren E. Collison  
[lauren.e.collison@gmail.com](mailto:lauren.e.collison@gmail.com)

### MYAF Co-Chair

Michael Heinz  
[mheinz@fruitportschools.net](mailto:mheinz@fruitportschools.net)

### MYAF Co-Chair

Amy Marsh  
[amyelizabethvp@gmail.com](mailto:amyelizabethvp@gmail.com)

### Governor's Traveling

### Exhibit Coordinator

Christopher Bruce  
[bruceachristopher@gmail.com](mailto:bruceachristopher@gmail.com)

### Multi-Ethnic Concerns

Tammi Browning  
[tbrownin@bentleyschools.org](mailto:tbrownin@bentleyschools.org)

### MAEA Memorial Scholarship,

### Professional Development

### Scholarship

Wendy Sample  
[samplew@dearborn.k12.mi.us](mailto:samplew@dearborn.k12.mi.us)

### YAM Chair

Carolyn Steenland  
[csteenland@tricityschools.com](mailto:csteenland@tricityschools.com)

### Region 1 Liaison

Jacqueline Edwards Lane  
[jlane51437@sbcglobal.net](mailto:jlane51437@sbcglobal.net)

### Region 1 Liaison

Robin McDaniels  
[mcdanirob@aol.com](mailto:mcdanirob@aol.com)

### Region 2 Liaison

Emily Finan  
[Em.Finan@gmail.com](mailto:Em.Finan@gmail.com)

### Region 2 Liaison

Noa Kritzer  
[noadkritzer@gmail.com](mailto:noadkritzer@gmail.com)

### Region 3 Liaison

Annie Howard  
[afhoward@adrian.k12.mi.us](mailto:afhoward@adrian.k12.mi.us)

### Region 3 Liaison

Meredith Giltner  
[giltnerm@aaps.k12.mi.us](mailto:giltnerm@aaps.k12.mi.us)

### Region 3 Liaison

Jackie Whiteley  
[jwhiteley@tps.k12.mi.us](mailto:jwhiteley@tps.k12.mi.us)

### Region 4 Liaison

Jan Cramer  
[jcramer@battle-creek.k12.mi.us](mailto:jcramer@battle-creek.k12.mi.us)

### Region 4 Liaison

Joni Siler  
[jonisiler@me.com](mailto:jonisiler@me.com)

### Region 5 Liaison

Dorothy Brueck  
[dbrueck@constps.org](mailto:dbrueck@constps.org)

### Region 5 Liaison

Nancy Turner Douglas  
[dugkazoo@att.net](mailto:dugkazoo@att.net)

**Region 6 Liaison**

Keith Rayner  
krayner@scslakeview-k12.com

**Region 7 Liaison**

Melissa Parks  
mparks@dcds.edu

**Region 7 Liaison**

Catherine Kaczmar  
ckaczma@oakparkschools.org

**Region 8 Liaison**

Dean Wilson  
uu.fx@hotmail.com

**Region 8 Liaison**

Christine Hesch  
heschc@fowlervilleschools.org

**Region 9 Liaison**

Amy Foster  
amy\_foster10@hotmail.com

**Region 9 Liaison**

Sara Goodrich  
SaraLGoodrich@yahoo.com

**Region 10 Liaison**

Tammi Browning  
tbrownin@bentleyschools.org

**Region 10 Liaison**

Lisa Wright  
wrightl33@yahoo.com

**Region 11 Liaison**

Melissa Carpp  
Mcarpp1@yahoo.com

**Region 11 Liaison**

Lauren Collison  
lauren.e.collison@gmail.com

**Region 12 Liaison**

Diane Brown  
diane-brown@charter.net

**Region 12 Liaison**

Therese Lunsford  
tlunsford@mtpleasant.edzone.net

**Region 13 Liaison**

Michael Heinz  
mheinz@fruitportschools.net

**Region 13 Liaison**

Casmara Karrip  
casmarakarrip@choiceschools.com

**Region 14 Liaison**

Erika Faust  
erikaf@centurytel.net

**Region 15 Liaison**

Jill Walker  
walkerj@glenlake.k12.mi.us

**Region 16-18 Liaison**

Darcy Schreiber  
darcyj9@hotmail.com

**Region 16-18 Liaison**

Melissa Hronkin  
m\_hronkin@hotmail.com

**Region 16-18 Liaison**

Michael Letts  
miletts@nmu.edu

**Support Services:**

**MAEA Bookkeeper**  
Margaret Black  
MEJBL8@charter.net

**Webmaster**

Dan Soelberg  
Contact Jane Inhulsen  
Inhul4@comcast.net

**NAEA Officers from MI:**

**NAEA Past-President**

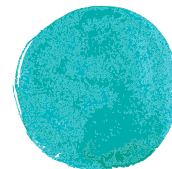
Dennis Inhulsen  
d.inhulsen@gmail.com

**NAEA Western Region VP-Elect**

Cindy Todd  
cindyodd@ferris.edu

**NAEA Middle Level Director**

September Buys  
septemberbuys@yahoo.com



**SRC SERVICE REPRODUCTION CO.**  
**ART SUPPLIES**

340 Summer Ave NW  
Grand Rapids, MI 49504  
Phone 1.616.451.2901  
Toll Free 1.800.438.0438  
Fax 1.616.451.9149

Contact us for a FREE catalog!  
[www.servicereproduction.com](http://www.servicereproduction.com)



## Michigan Art Education Association Regional Divisions and Liaisons

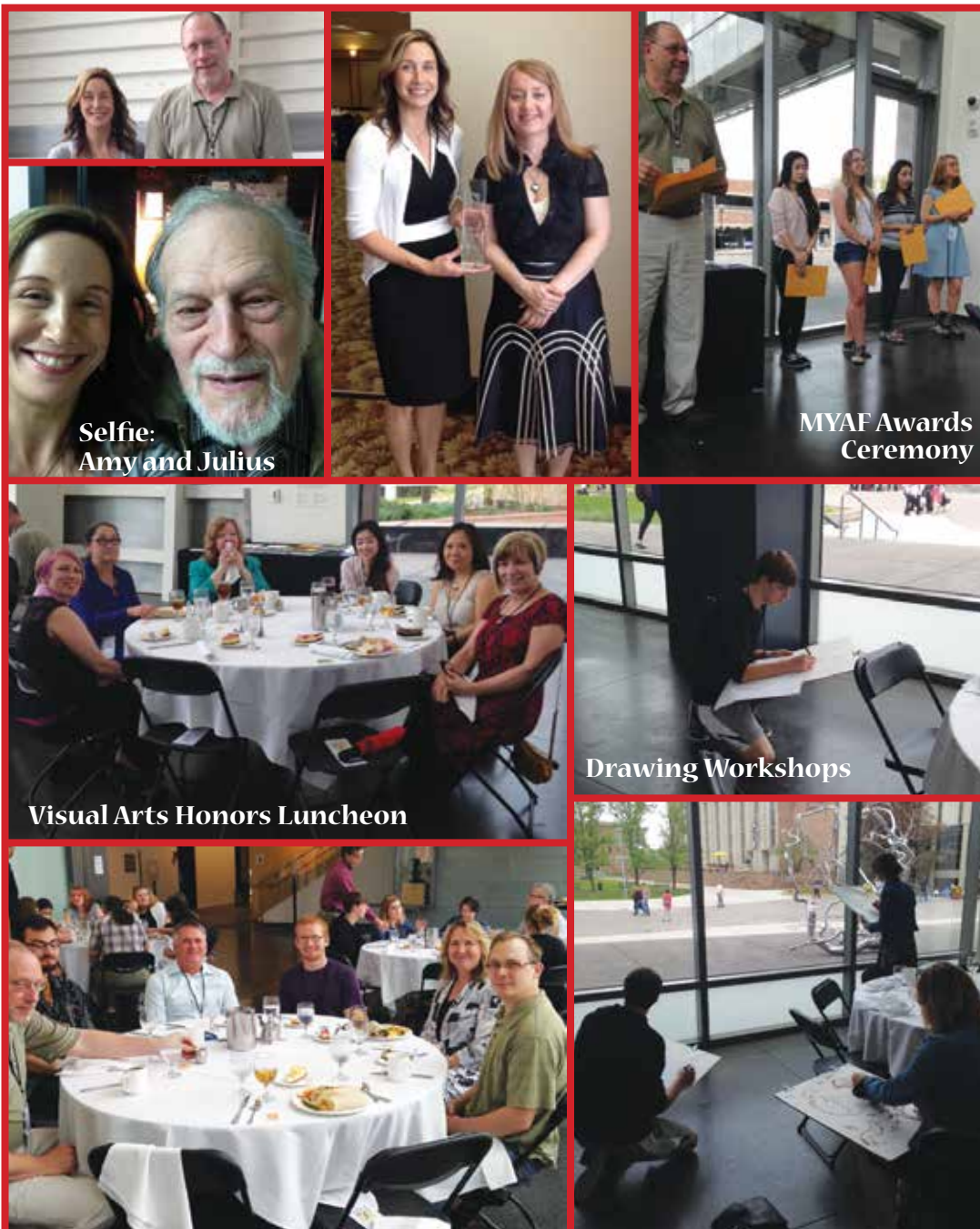
...

The County in Which You Teach Determines Your Region





**Visual Arts Highlights from the  
Michigan Youth Art Festival**



Selfie:  
Amy and Julius

MYAF Awards  
Ceremony

Visual Arts Honors Luncheon

Drawing Workshops



Jane Inhulsen  
Executive Secretary  
8149 Green Valley  
Grand Blanc, MI 48439

Return Service Requested

PRSRT STD  
U.S. POSTAGE  
**PAID**  
ALLIED MEDIA

## NAEA/MAEA Membership Application

**Membership with MAEA is membership to both NAEA and MAEA:**

Mail to: MAEA Membership Chair: Christopher Bruce, 2630 Northvale Dr. NE Apt. 102, Grand Rapids, MI 49525

-OR- Membership online: [www.miarted.org](http://www.miarted.org) click on *All Members Services*, then click on *Become a Member*

### Please Print All Information Below:

☐ New ☐ Renewal - I.D. Number \_\_\_\_\_

Name: \_\_\_\_\_

Address: \_\_\_\_\_

City/St./Zip: \_\_\_\_\_

Home Phone: (\_\_\_\_\_) \_\_\_\_\_

Email: \_\_\_\_\_

MI County you teach/work in: \_\_\_\_\_

School District: \_\_\_\_\_

Work: (\_\_\_\_\_) \_\_\_\_\_ Fax: (\_\_\_\_\_) \_\_\_\_\_

### Membership 104/204

Categories: \_\_\_\_\_ Dues: \_\_\_\_\_

☐ Active \$95

☐ Associate \$95

☐ Retired \$65

☐ First Year Professional \$80

☐ Full-Time Student \$45

School: \_\_\_\_\_

Graduation Date: \_\_\_\_\_

☐ Institutional \$220

SUB TOTAL \_\_\_\_\_

Subscription Option:

☐ Studies in Art Education \$20

TOTAL \_\_\_\_\_

Students: Attach photocopy of current student I.D.

### Please check ONE professional level where you spend over 50% of your professional time:

☐ Elementary ☐ Middle Level ☐ Secondary ☐ Museum ☐ Higher Ed

☐ Supervision/Administration ☐ Full-Time Student ☐ Retired Member

### Payment Information

☐ Check Enclosed -- **PAYABLE TO NAEA** (Tax deductible) 501 C3 Membership

☐ Charge -- ☐ VISA ☐ MasterCard

Credit Card Number \_\_\_\_\_ Expiration Date \_\_\_\_\_ 3-Digit Security Code \_\_\_\_\_

Signature \_\_\_\_\_ Charge by phone 1(800) 299-8321

Membership dues include \$25 for a membership subscription to Art Education and \$15 for a membership subscription to NAEA News. A separate rate is established for non-member subscriptions.