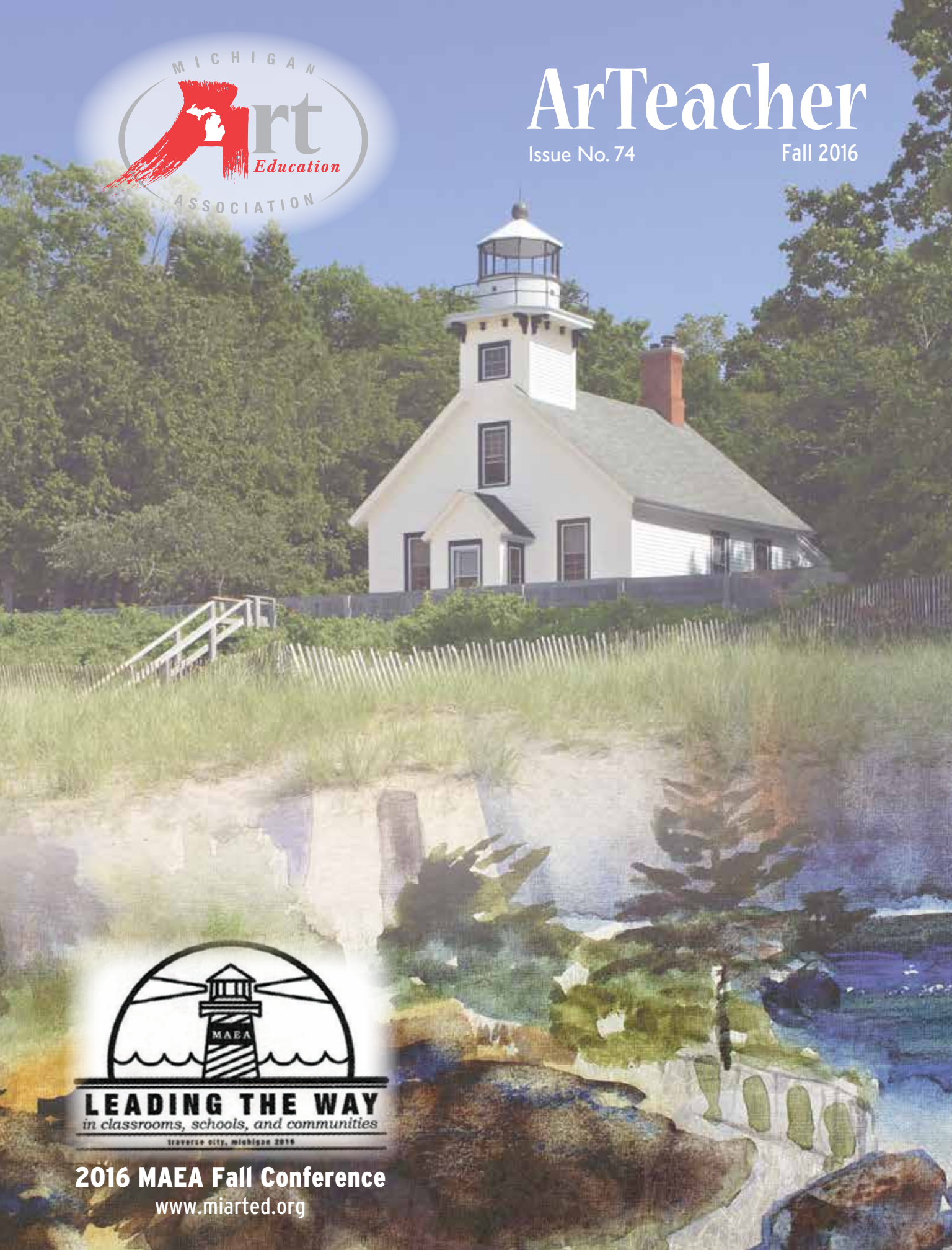




# ArTeacher

Issue No. 74

Fall 2016



**LEADING THE WAY**  
*in classrooms, schools, and communities*

traverse city, michigan 2016

**2016 MAEA Fall Conference**

[www.miarted.org](http://www.miarted.org)

---

Fall 2016 • Issue No. 74 • Quarterly Publication  
• Free to MAEA Members •

The Michigan Art Education Association's mission is to promote quality visual arts education through leadership, service, and professional development.

---

**Contents**

President's Message ..... 3  
Vice President's Message ..... 4  
Retired News ..... 5  
Welcome ..... 7  
Keynote Speakers ..... 8  
How to Navigate the Conference ..... 9  
Failure:LAB ..... 10  
The Storytellers ..... 10  
MAEA Spotlight Speakers ..... 12  
Registration and Hotel Information ..... 15  
Grand Traverse Facts ..... 16  
Members' Art Show Information ..... 22  
Artisan's Gallery Form ..... 23  
Pre-Registration Forms ..... 24  
Conference Information and Policy ..... 27



**President**

*Ren Hullender*

**Past President**

*Lani Warner-Yuen*

**President-Elect**

*Christopher Bruce*

**Vice President**

*Adrienne DeMilner*

**Executive Secretary**

*Jane Inhulsen*

**Executive Council**

*Tanya Lockwood, Treasurer*

*Sharon Stratton, Secretary*

*Annie Howard, Membership*

*Cyndi Koppelman, NAEA Delegate*

**Contact**

*[www.miarted.org](http://www.miarted.org)*

*[inhul2@gmail.com](mailto:inhul2@gmail.com)*

---

**MAEA *ArTeacher* is published three times per year:  
January, May, September, by the Michigan Art  
Education Association.**

Publications for Spring/Summer and Fall are in newsletter format published as full editions and are posted on the website. The Winter publication is in macro-newsletter format with the full edition posted on our website. Annual Membership includes membership and publications for both the National Art Education Association and the Michigan Art Education Association: \$95 [Active Membership], \$95 [Associate], \$65 [Retired], \$80 [first-year Professional], \$45 [student], \$220 [Institutional].

*Post Master send address changes to:*

Jane Inhulsen  
18674 Goldwater Road  
Westfield, IN 46062

Deadlines for submitting material to the MAEA *ArTeacher*:

April 1 – Spring/Summer

July 1 – Fall

November 1 – Winter

To submit please email articles to: *[inhul2@gmail.com](mailto:inhul2@gmail.com)*.

Guidelines for articles posted on Publications tab at  
*[www.miarted.org](http://www.miarted.org)*.

For Articles and Advertisers, contact:

Executive Secretary: *[inhul2@gmail.com](mailto:inhul2@gmail.com)*

The Michigan Art Education Association is a non-profit professional art education association and does not discriminate on the basis of race, religion, age, sex, color, disability, sexual orientation or national or ethnic origin in following their policies, membership, meetings or any other events or activities.

Graphic Designer: Amy James

Editor: Jane Inhulsen

---

---

# The Emerging Renaissance [Art] Educator

---



**Ren Hullender**

*Hulle1r@cmich.edu*

To catch the proverbial “next wave” in education, we need to metaphorically begin paddling in the direction we see it moving. For the last three years, I have consequently introduced aspects of the theme, Broadening Our Vision. I’ve talked about expanding our knowledge, enhancing our skills, and retooling our teaching in order to serve, lead, and share our professional expertise with schools and communities. Choice-based learning, project-based learning, service-learning, STEAM, and teacher leadership are all parts of the equation. The next wave is here and it is opening up additional

opportunities for art education! In December 2015, President Obama signed into effect the Every Student Succeeds Act (ESSA), which redefines the arts as an essential part of a well-rounded education, along with math and language arts. NCLB is gone, and the new legislation lists 24 sections specifically describing expanded opportunities for the arts – including support for the arts in STEM education.

In the July 2016 ART Education journal dedicated to STEAM, James Rollings, Jr. states, “the arts have historically been practiced as (1) a system for producing well-crafted forms of aesthetic depth and beauty with a focus on thinking through observation and experimentation while achieving a mastery over materials and techniques; (2) a system for communicating cultural and personal information with a focus on thinking expressively through symbolic languages; and (3) a system for critical-activist transformation with a focus on critically (re)thinking and interrogating images, ideas, and prevailing contexts” (p. 6). He goes on to reveal how these three artistic pedagogical frameworks find “curricular kinship” across a broad array of content, processes, dispositions, and issues – constituting, what I believe, are the exemplary practices of a Renaissance [Art] Educator. As art teachers, we naturally design the pedagogical structures in our classes that promote the integration of math, science, technology, history, and literacy through the creative manipulation of materials and processes. What our students learn everyday is inherently trans-disciplinary, experiential innovative thinking that is relevant to their needs, school curricula, community concerns, and global issues. Only through the arts!

In addition, new research and literature increasingly advocates for arts integration at all levels. For example, a recent study conducted by CMU’s Center for Excellence in STEM Education found that when middle school students were presented with open-ended, arts-based strategies in STEM settings, they:

- felt empowered to experiment, discover, and take risks with content,
- took ownership and responsibility for their learning,
- persevered to successful completion of problem-solving assignments,
- experienced relationships between isolated disciplines,
- employed personal learning systems, and
- expressed heightened interest and confidence in future learning.

Even more importantly, we found that art experiences mediated many of the systemic barriers to an inclusive and equitable education for all students – especially girls, minorities, socio-economically disadvantaged, and students receiving special education services.

As we continue to reexamine our practices in light of the shifting paradigm of education, we will realize our Renaissance identity and find ourselves - as the 2016 MAEA Conference theme suggests - “Leading the Way!” Make plans now to attend the October conference in Traverse City to learn more, share your expertise, and plan together with other Renaissance [Art] Educator Leaders!

---

# Creativity and the Future of Art Education

---



**Adrienne DeMilner**

**Creativity:** A phenomenon whereby something new and somehow valuable is formed. In December 2015, Congress passed the Every Student Succeeds Act (ESSA), which is intended to empower states to build differentiated systems for school improvement in ways sadly lacking from programs like “No Child Left Behind.” The Federal government is now recognizing the role that the arts can play in providing innovative design solutions to problems presented in other disciplines. Several years earlier, Congress launched the Congressional STEAM Caucus to increase awareness of the importance of STEAM education.

Integration of the arts with core subjects is not just a suggestion anymore. The arts are finally being seen as essential to the full education of the student. Creativity is now the expectation in ALL subject areas and the arts can certainly provide the skills to make connections. STEAM is now seen as the new curricular approach to educating the whole student. As art educators, we are tasked with new, higher expectations. If we choose to accept, we can be the purveyors of knowledge in other content areas that will enhance the art experience, bringing learning to a whole new level.

We have all heard the famous Einstein quote about “Creativity being more important than Knowledge.” Great minds need both to reach their highest level of success. Steve Wozniak (Apple, Inc.) worked as a calculator designer when he started attending weekly meetings of fellow engineers that met in a garage to discuss computers. He never talked in these meetings, but instead went home to tap into his own creativity by working on his designs, all the richer for the exposure to new ideas. Leonardo da Vinci’s genius was the result of his exposure to a diverse field of studies, including art. His creativity was ignited with his broad knowledge base, variety of ideas and resources, and great technical training in art. This was true STEAM education and it happened over five centuries ago.

Collaboration at the highest level can occur when creative minds converge and share best practices. MAEA can provide you with quality professional development at our upcoming conference in Traverse City. Even sitting in the room while ideas are bouncing around can plant a seed of inspiration for your art lessons. So many of us are alone in our buildings without the opportunity to network with colleagues in our field. At school improvement meetings, we are designated as “electives” and sent to brainstorm solutions to random student or building issues NOT related to our content areas.

It’s at times like these that I value and appreciate my connections within our organization. Attending the annual conference can provide a much-needed boost to inspire and guide you on your journey this year. Traverse City is awaiting you with a multitude of inspirational events. Interlochen Arts Academy will be offering several workshops, guided tours and providing a reception for us. They will also be showcasing our member show in their gallery. There will be inspirational keynote speakers, including Deborah Reeve, NAEA Executive Director, and some surprises yet to be revealed. Consider attending the conference this year and inviting a friend or colleague to learn with you. We cannot learn in a vacuum. Join us this year and be a part of the revolution in Art Education.



---

## Retired News

---



### Maureen Roslanic

What a great place to get away, the beautiful Grand Traverse Resort for the Annual MAEA Fall Conference in Traverse City from October 27-30. Please join us, see old and new friends, share ideas, get rejuvenated and boast about your grand kids.

We are trying something new for the 2016 MAEA conference held in Traverse City. A Mystery Treasures raffle with valuable art supplies will be on Saturday at 5:00 p.m. in the vendor area. You can be a winner for a \$5.00 raffle ticket or five raffle tickets for \$20.00 with proceeds going to the Student Scholarship Fund. You may purchase tickets online at preregistration or onsite at the fall conference in Traverse City. Please let me know if you have questions.

The “Under Construction” new art teacher/retired art teacher collaboration is still gaining new MAEA members. Please let me know if any others would like to join us on Facebook or email [mroslanic@gmail.com](mailto:mroslanic@gmail.com). We are glad to assist others that want new ideas or have questions. It is a great way to be supportive of one another. Be stress free...

Please encourage recent MAEA retirees to be recognized for their dedication at the Awards Banquet on Saturday. It is our chance to honor each new retiree and present them with a pin and certificate. We have even changed the name to “Emeritus” honorees.

We have two retiree-only workshops scheduled at Blackbird Arts: Friday is *Words & Images, Ink & Paper*; and Saturday is *Tick Tock Clay Clock*. Both workshops have limits to the number of participants. The *Words & Images, Ink & Paper* workshop has a limit of six participants, but we can possibly offer a second session or have an open studio (this could be any medium - self guided) during the same time period if needed.

On Sunday the retirees are presenting a Master Medley workshop with hands-on learning for \$5.00 each with proceeds going to the Student Scholarship Fund.

I hope to keep the retirees involved and motivated in the MAEA membership. Please join us at the division gathering for “Emeritus” art teachers.

Please send me a message if you are planning to attend or presenting. I look forward to seeing everyone in Traverse City.

Thank you so very much,  
Maureen Roslanic

**SRC SERVICE REPRODUCTION CO.**  
**ART SUPPLIES**

340 Summer Ave NW  
Grand Rapids, MI 49504  
Phone 1.616.451.2901  
Toll Free 1.800.438.0438  
Fax 1.616.451.9149

Contact us for a FREE catalog!  
[www.servicereproduction.com](http://www.servicereproduction.com)

The advertisement features a background image of various art supplies including paint bottles, brushes, and markers.

You may register online at [www.miarted.org/data/](http://www.miarted.org/data/). The online MAEA Fall Conference registration site contains only those events requiring TICKETS such as MEALS, TOURS and TICKETED SESSIONS. You may download the full conference schedule on the MAEA home page at [www.miarted.org](http://www.miarted.org).

# Meemic Masterpieces



## K-12 Student Art Contest & Grant Opportunity

Join The Meemic Foundation in showcasing the artistic ability of our youth while rewarding your classroom in the process. Any Meemic Foundation Club Member can sponsor a student by submitting their original art masterpieces from **October 3, 2016**, to **December 30, 2016**. Up to 50 winning artworks will earn the winning Club member's school a **\$300 art supplies grant!** Plus, each winning artist will receive an **Amazon Fire® Tablet**. All students will receive a certificate of appreciation.

**1** Any Meemic Foundation Club member can sponsor a K-12 student's original artwork reflecting one of the following themes:

- **Be Green/Healthy Living** - how can we take care of ourselves and our planet
- **School Spirit** - showcase what you like about your school or teachers
- **Meemic Tree** - show us your interpretation of the Meemic Tree

**2** **Visit** [MeemicFoundation.org/Masterpieces](http://MeemicFoundation.org/Masterpieces) for information on how to apply and to review the complete rules and art guidelines.

**3** **Entries must be received by 5 p.m. ET December 30, 2016, at:**

The Meemic Foundation  
Attn: Meemic Masterpieces Art Contest  
1685 N. Opdyke Road  
Auburn Hills, MI 48326

Not a Foundation Club member?  
Join today at [MeemicFoundation.org/Register](http://MeemicFoundation.org/Register)

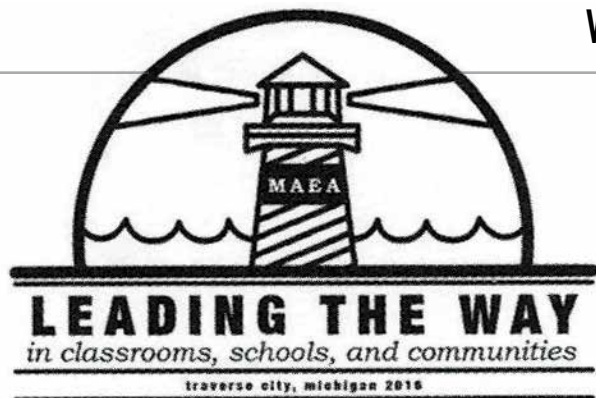
Winning entries will be announced  
by Tuesday, February 14, 2017



The Meemic Foundation



## Welcome



- Kelcey Coveyou and Jill Walker •
- Conference Co-Chairs •



We look forward to welcoming you to Traverse City for the 2016 MAEA Conference. Leading the Way in classrooms, schools, and communities. Empowering art educators to develop greater vision and direction for their students, colleagues, and communities in order to make a life-long difference in those we serve.

Whether you join us for one day or all four, you will have many opportunities to learn from and with the many talented artists and teachers presenting workshops. Our keynotes, Katherine Douglas, Maria Fabrizio, Deborah Reeve, and Jeffrey Kimpton will inspire and motivate you with their wealth of knowledge and expertise!

Thursday afternoon the conference starts with outstanding workshops and sessions at the Grand Traverse Resort from 4–6 p.m. Thursday night we have a variety of options to tempt your artistic taste buds. Sign up for a tour of the Traverse Commons 4–5 p.m. and/or visit the shops and galleries at The Village at Grand Traverse Commons (formerly the State Hospital grounds), or go on your own Gallery Walk and Shopping Tour in downtown Traverse City ([www.downtowntc.com](http://www.downtowntc.com)). We hope you will end your artistic adventures at the Crooked Tree Arts Center Wine and Cheese event 7–9 p.m. (ticketed).

Friday starts off with NAEA's Dr. Deborah Reeve, then vendors and sessions. Maria Fabrizio will speak after lunch. The afternoon has MAEA Spotlight Speakers, great workshops, and the day will conclude with an

Interlochen sponsored reception and then *Failure:Lab*. *Failure:Lab* will feature September Buys and two other speakers.

Saturday is the day that begins with our Annual Meeting and ends with our *Illuminations Gala*. A party to light up the night! In between, it is jam-packed with Katherine Douglas, Interlochen's president Jeffrey Kimpton, MAEA Spotlight Speakers, great workshops, and the Awards Banquet, too.

Sunday is the last day of this conference, but be sure you fit in a few more outstanding onsite workshops and then the planning begins for 2017 in Detroit. Interlochen is offering three continuing education classes; please visit [www.interlochen.org](http://www.interlochen.org) to register for these classes. Also, the Michigan Legacy Art Park, the Dennon Museum in Traverse City, or the Traverse Commons are all great stops on your way out of town.

Traverse City has so much to offer, and we are excited to share it with all of you. We know that you will leave inspired, invigorated, and refreshed for another year. Remember to check out some of the offsite self-guided venues either on your way to or from the conference. Also, we would like to thank all of the volunteers who helped us bring this conference to you. From the bottom of our hearts, thank you!

*Enjoy the conference!*

### Grand Traverse Resort & Spa Driving Directions

**Street Address:** 100 Grand Traverse Village Blvd. Acme, MI 49610

The Grand Traverse Resort and Spa is located six miles northeast of downtown Traverse City and 10 miles from Cherry Capital Airport. Ranked as a Top 50 travel destination by *Conde Nast Traveler*, it is one of the Midwest's largest full service, year-round resorts and conference destinations.

For directions, go to: <http://www.grandtraverseresort.com/stay/getting-here>.

---

## Keynote Speakers

---

### Katherine Douglas

---



Katherine Douglas, a co-founder of Teaching for Artistic Behavior, Inc., has taught in an elementary choice-based art classroom for over 35 years. She is co-author of *Engaging Learners through Artmaking: Choice-Based Art Education in the Classroom* and other articles about choice-based art education. She has presented choice-based pedagogy at national conferences and provides professional development to school districts and higher education. She is currently on the faculty of the Massachusetts College of Art and Design TAB Institute. She has collaborated in international online educational mentoring projects and was named Massachusetts Distinguished Art Teacher in 2005.

---

### Maria Fabrizio

---



Maria is an illustrator and designer who believes smart ideas make beautiful work. With an affection for process, she works by hand, and on screen for projects large and small while maintaining her daily illustration blog — Wordless News. Maria is based in the hot metropolis of Columbia, South Carolina where she lives with her husband, son, a spoiled cat and happy dog.

Maria brings more than seven years of professional experience to bear and holds an MFA from Virginia Commonwealth University in Graphic Design/Visual Communication.

Sample Client list: NPR, *National Journal*, University of South Carolina, Serenbe, *Rhode Island Monthly*, *Writer's Digest*

---

### Jeffrey Kimpton

---



Jeffrey Kimpton is the president of Interlochen Center for the Arts, where he leads a portfolio of distinguished programs in arts education, presentations, public broadcasting and media at this internationally renowned 90 year old arts organization.

Mr. Kimpton has been the President since 2003. Mr. Kimpton holds degrees in music education and school/arts administration from the University of Illinois–Urbana. In his more than 40 year career he taught and administered K12 music and arts programs in New York, Minnesota and Kansas, taking each to regional and national distinction. He was director of education for Yamaha Corporation for the U.S., and a director at the Annenberg Institute at Brown University leading research and capacity development in public engagement around public education reform. Prior to assuming his Interlochen

post he was Director of the School of Music at the University of Minnesota–Minneapolis, and professor of music education.

At Interlochen Mr. Kimpton has led a multi-year \$100M+ expansion of Interlochen programs, campus, operations and technology, adding programs in adult education, motion picture arts, comparative arts, digital arts, singer/songwriter and fashion design. An award winning technology environment has expanded the global reach of broadcasting, media and constituent engagement. Interlochen was awarded the National Medal of Arts by President George Bush in 2006 for its leadership in arts education.

Mr. Kimpton has served on several national commissions on the future of the arts and education, and is an active author, speaker, presenter and consultant with schools, universities, and nonprofit arts and cultural organizations in the U.S., Canada, Europe and Asia. Mr. Kimpton will retire from Interlochen in June of 2017, and concentrate on his consulting practice, writing and teaching, and his family.



---

# Keynote Speakers

---

## Dr. Deborah B. Reeve

---



Dr. Deborah B. Reeve is the Executive Director of the National Art Education Association (NAEA), located in the Washington, DC metro area. Appointed in February 2007, she is charged with the stewardship of NAEA's mission - advancing visual arts education to fulfill human potential and promote global understanding.

With twenty-five years of leadership experience in the professional association field, Dr. Reeve brings a proven record of nonprofit management, organizational development and creative leadership to her work in the arts education field. Her personal mission is to deepen the public's knowledge and understanding of the visual arts as essential to human development.

A former art educator, Dr. Reeve has taught at the pre-K–12 levels in both public and private schools and has held an adjunct faculty position in the graduate school at Lesley University in Cambridge, Massachusetts. She has extensive experience as a presenter and consultant to national and international education organizations. And – she is a practicing visual artist who regularly creates and exhibits her mixed media abstract works on canvas and paper.

---

## How to Navigate the Conference Session Information Online

---

### Session Number system:

- 100's** = Thursday sessions
- 200's** = Friday sessions
- 300's** = Saturday sessions
- 400's** = Sunday sessions

**Session Numbers may be prefaced with 'TC', which means Ticketed Session.** Example: TC #200. These sessions are either hands-on or have a fee and therefore are limited in the number of participants with a "ticket." Medleys and tours will have actual tickets in the registration envelope you receive when you check in at the conference. Hands-on ticketed sessions provide a class list to the presenter with NO individual ticket in the envelope. There will be a "Big Ticket" with these sessions listed for you to check in at the session.

### Session Numbers maybe prefaced with:

- '**K**' which means a Keynote Speaker. Example: #K-1
- '**SS**' which means a Spotlight Speaker. Example: #SS-1
- '**T**' which means a Tour. Example: #T-1
- '**M**' which means a Meal. Example: #M-1
- '**R**' which means a Reception. Example: #R-1



### All Fall ArTeacher/onsite program Book Conference session Codes:

- Logo for a Bus or Car = Offsite
- Logo for Foot = Offsite Walking Distance
- AA** = All Audiences
- HS** = High School
- MS** = Middle School
- EL** = Elementary
- HO** = Hands-On
- R** = Retired
- T** = Technology
- ST** = Student Teacher
- MU** = Museum
- HE** = Higher Education
- CD** = Cultural Diversity
- O** = Other
- AS** = Administrator/Supervisor
- CI** = Classroom Instruction
- EE** = Exceptional Education

### The conference session format you will find online gives you all the information as follows:

- TIME: [12:00-3:00 p.m.]
- SESSION # [example: TC #100 for Ticketed, #T-1 for Tours, #M-1 for Meals, #R-1 for Receptions, etc.]
- SESSION TITLE
- LIMIT OF PARTICIPANTS: [may be limited due to hands-on, or room size]
- TICKETED: [\$\$ cost for session]
- SESSION DESCRIPTION
- REPEATS: [or not repeated]
- AUDIENCE: [note session key categories]
- PRESENTER: [name, position, school, business]



**FAILURE:LAB**

**Grand Traverse Resort**  
**Friday, October 28, 2016**  
**8:00-10:00 p.m.**  
**Cost: \$20**

**What is FAILURE:LAB?**

**FAILURE:LAB is a raw and intimate evening showcasing personal stories of failure.**

With a refreshing environment of openness, it helps pave the way for change by crushing the isolation and stigma around failure. Failure then takes its rightful place as the crucial first step to the next big thing. Embrace it, learn from it, build on it.

This one of a kind experience will let three successful people tell their personal stories of failure in only nine minutes without the happy ending. Then you, as the audience member, are encouraged to respond to

these stories immediately by writing or tweeting what you take away from them. In between each storyteller, there will be a performance by a variety of entertainers and the evening will end with a reception where people are welcome to stay and meet the storytellers and entertainers. Cash bar available.

*For more info on FAILURE:LAB visit:  
[www.failure-lab.com](http://www.failure-lab.com)*

---

## The Storytellers

---



**Katherine Douglas**

Co-Founder of  
Teaching for Artistic  
Behavior / Art Teacher  
for over 35 years



**September Buys**

NAEA National Middle  
Level Division Director /  
Visual Art and Creativity  
Teacher



**Marty Lagina**

Reality Television  
Personality / Founder of  
Villa Mari Vineyards  
Bio: [articlebio.com/  
marty-lagina](http://articlebio.com/marty-lagina)

**Spark  
their  
future.**

**KCAD**  
Kendall College of Art and Design  
of Ferris State University

Ignite your students' unique skills in one of our 17 specialized undergraduate programs.

Discover the power of a KCAD education today at [kcad.edu](http://kcad.edu)

# Leave a Trail!

Lesson Plan for Grades 5-12

Create a dynamic “paint trailed” book cover or wall hanging in the style of Henri Matisse!

*“When I see a picture, I forget what it represents. All that is important to me is line, form, and colors.”*  
—Henri Matisse

Make a vibrant, individual statement using brightly colored felts, paint applied by squeezing, and a folding technique that creates a repeating pattern. The end result is a functional piece of artwork in the form of a wall hanging or book cover!

[DickBlick.com/lesson-plans/leave-a-trail](http://DickBlick.com/lesson-plans/leave-a-trail)

**FREE** lesson plans and video workshops at [DickBlick.com/lesson-plans](http://DickBlick.com/lesson-plans).  
For students of all ages!

# BLICK®

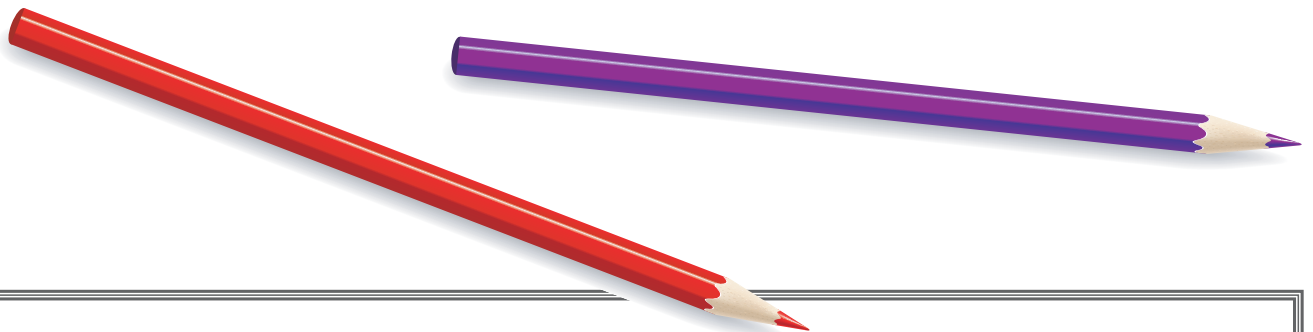
800•447•8192 [DickBlick.com](http://DickBlick.com)



Request a  
**FREE**  
sale flyer!

Visit  
[DickBlick.com/requests/bigbook](http://DickBlick.com/requests/bigbook)  
to request a FREE sale flyer!

Blick  
supports



## 2016 CONFERENCE SCECHS

**State Continuing Education Clock Hours (SCECHs)** may be requested at time of pre-registration, either online or snail mail or onsite, with a \$20 certificate fee charge. Participants who desire SCECHs are responsible for following state guidelines by having presenters sign you in and out of their sessions. Please look for the SCECH table near registration and be prepared to pay the fee and fill out a form.

**Please note:** Upon conclusion of the workshops we will upload participant information to a Secure Central Registry (SCR). This will trigger an email from the Michigan Department of Education instructing you to complete an online profile and evaluation within 30 days. Failure to follow through within 30 days will mean loss of SCECHs. SCECHs and graduate credits may not be applied to the same workshop.

---

## MAEA Spotlight Speakers

---

---

### Janine Campbell

---



Janine is a K-12 certified Visual Arts teacher at Byron Center Public Schools. As a graduate from The University of Michigan-Flint and Western Michigan University, she earned her Masters of Art in Art Education and has been practicing her craft in the middle school art room since 2004.

Her students' works have been featured in *SchoolArts Magazine* and the *MACUL Journal*. She has been a keynote presenter for the Art Education Association of Indiana Conference, the Ohio Art Education Association Conference, as well as presenter for the National Art Education Association Convention, Michigan Art Education Association Conference and Summer PD, the Michigan Association of Computer Users in Learning Conference, as well as local educational institutions.

Her classroom has won local and national recognition in the Scholastic Art and Writing Awards, awarded various grants, as well as receiving a second place award for the use of educational technology in the 2011 PBS Innovation Awards and first place for the 2013 STEAMed Innovator Awards. She was also named a 2014 PBS Learning Media Digital Innovator, 2015 Michigan Art Education Association Middle Level Educator of the Year, and 2015 National Art Education Association Western Region Middle Level Educator of the Year. You can find out more information about her classroom on her blog at [www.bcwmsart.weebly.com](http://www.bcwmsart.weebly.com).

---

### Tricia Erickson

---



Tricia is an art educator and “design thinking” enthusiast. She finished her 10th year of teaching art at Northview High School this June and taught art for two years at the elementary level prior to this. She graduated from GVSU in 2005 with a Bachelor of Arts in Art Education and French Language and received a Master’s in Art Education through Kendall College of Art & Design in 2010. She is also a dual enrollment instructor for Kendall College and has taught in the art education department at GVSU as an adjunct professor. She has enjoyed volunteering with the MAEA in various roles from a Region 9 Liaison (2012-2015) to Co-Chairing the 2015 MAEA Fall Conference that was hosted in Grand Rapids in October of 2015.

Being a member of MAEA/NAEA keeps her excited about teaching art and is such a wonderful way to get connected with the amazing network of art educators out there. Her biggest passion in life, besides her incredibly supportive husband and three beautiful children, is to foster creativity and design thinking in education and to provide relevant and engaging art experiences to all of her students

---

### Camilla Hanenberg

---



It is a life-long dream come true for Camilla to be pursuing the representational Atelier method of drawing and painting. As an artist educator, Camilla has taught children as young as three and up to the age 83 for 27 years. Attending University of Cincinnati, then the Art Academy of Cincinnati, she has a Master’s Degree in Art Education and is proud to have achieved the National Board Certification in 2013. She has attended the Anthony Ryder Atelier in Santa Fe for one year and the Studio Escalier in Argenton-Chateau, France for the summer of 2016.

Camilla will be offering four presentations at the conference, *When’s the Last Time You Drew a Realistic Still Life?* and *Bargue Plate Drawing: Drawing Skills for Contemporary Curriculum*, once each and *Atelier Lesson Plans: Teaching Realistic Methods to Grades K-12* twice.

---

## MAEA Spotlight Speakers

---

---

### Steve Harryman

---



Steve is an award-winning filmmaker and art education advocate. His cinematic work has appeared most recently in the Hallmark Hall of Fame movie “Away & Back” and earlier this year, his art-based film “The Last Lesson” was awarded top honors in the 37th Annual Telly Awards. In making “The Last Lesson” Steve rediscovered his once-lost love for art and is now focused on being an advocate for K-12 art education through film and video.

---

### Candi Price

---



Candi graduated from Western Michigan University with a B.A. in Art Education and a M.A. in Elementary Teaching and Learning. She has taught art for 18 years and currently teaches elementary art for Caledonia Community Schools. Eleven years ago, Candi transformed her classroom into a TAB-Choice studio and never looked back. Since then, she has shared her passion for authentic artmaking through a TAB-Choice art education by presenting at MAEA’s annual conferences, the Ottawa Area ISD, multiple universities, and the 2014 Boston TAB Institute at MCAD. She has also assisted in organizing various TAB-Choice professional development opportunities throughout Michigan and the Midwest. She is a co-founder of both the Midwest TAB-Choice and the Michigan T.A.B.-Choice Facebook groups, coordinator of the MiTAB teachers’ organization, and serves on the National TAB Leadership team.

---

### Dr. Cindy Todd

---



Dr. Cindy Todd is the Art Education Program Chair at Kendall College of Art & Design of FSU and the Vice President of the NAEA Western Region. Before becoming a professor, Cindy taught K-12 art in the Michigan public schools for over 14 years, teaching at all levels, elementary, middle and high school. Cindy, a former MAEA President, was the recipient of MAEA’s 2015 Teacher of the Year, the NAEA’s Student Chapter Sponsor Award of Excellence, and the Rochester Public School’s Secondary Teacher of the Year Awards.

She has presented keynote addresses at many conferences including Minnesota, Arkansas, Missouri, and Ohio, presented at many Michigan and NAEA Conventions, and has provided professional development for teachers across the state of Michigan. She is currently a key consultant in developing the Grand Rapids Museum School, whose school wide curriculum is based on design thinking and place-based learning. She also co-authored “Language Artists,” a program implemented district wide in the Grand Rapids Public Schools, which has won three National Endowment of the Arts Awards.

---

### Dr. Susannah Van Horn

---



Dr. Susannah L. Van Horn is an assistant professor of Visual Art Education at Michigan State University and is a joint appointment between the Department of Teacher Education and the Department of Art, Art History and Design. Her research areas include early childhood visual literacy skills, regionalist artists along with community-based oral history documentation, and the integration of contemporary artists into the Visual Arts curriculum in order to address challenging social justice topics and expand students’ awareness in the classroom.

ART EDUCATION ART HISTORY  
 STUDIO ART: CERAMICS  
 GRAPHIC DESIGN ILLUSTRATION  
 JEWELRY / METALSMITHING  
 PAINTING PRINTMAKING GVSU.EDU/ART  
 SCULPTURE VISUAL STUDIES



1105 CALDER ART CENTER  
 ALLENDALE, MI 49401  
 ARTDEPT@GVSU.EDU  
 (616) 331-3486



© 2014 GRAND VALLEY STATE UNIVERSITY

# Important: Registration Instructions

If you plan to register online at: [www.miarted.org/data/](http://www.miarted.org/data/), ONLY TICKETED SESSIONS [hands-on, medleys, meals] OR TOURS are listed on the registration site.

**Please read the following helpful information:**

1. Membership ID number: if your membership has or will expire before October 27, you must renew it. You can renew at: [www.miarted.org/MAEA\\_Membership.asp](http://www.miarted.org/MAEA_Membership.asp), or go to the NAEA site at [www.arteducators.org/community/membership](http://www.arteducators.org/community/membership).  
**If you renew after August 1, please retain a copy of your confirmation from NAEA.**
2. If you are a new/recent member and are not registered with MAEA systems yet, the MAEA online registration system will give you a temporary number so you can still register. MAEA and NAEA **require your membership to attend the conferences. We will send you reminders to fulfill this responsibility if we do not have confirmation from NAEA by our next membership reports.**
3. Many of our members find that they must re-enter the online registration site to adjust session selections. To do so, you will need to **use the same Membership ID and Last Name as you initially set up.** If you do not, you will be listed multiple times, and **will be charged fees each time you re-enter.** These can be cleared up, but adds to the challenge of accounting for the number of members attending. Should you have problems, email Margaret at [MAEAregistrar@gmail.com](mailto:MAEAregistrar@gmail.com) or Jane at [inhul2@gmail.com](mailto:inhul2@gmail.com).
4. MAEA conference now creates class lists for the presenters for the ticketed sessions; therefore you **will not be able to register for certain sessions for anyone else**, as your name will be on the list multiple times. You will be allowed to purchase only one ticket for each ticketed session.
5. Guests and spouses must be registered on the special Guest Registration site or Special Registration form. This link is found on the main registration login page. **You will not be able to select a meal, for example, the Awards Banquet, for more than one ticket.** You must register that additional ticket, or tickets in the guest registration.
6. *All receipts from both snail mail and online registration are emailed.* Watch for emails from: [maeaacctng@gmail.com](mailto:maeaacctng@gmail.com) and [maeaeregistrar@gmail.com](mailto:maeaeregistrar@gmail.com). If your payment is not made when registering online, you will receive an email reminder notice. If this is not paid, prior to the conference, you will not be guaranteed any of the ticketed sessions you have requested. You will need to register at onsite prices for the sessions that are still available.
7. *No conference badges will be included in envelopes at the registration desk until all payments are completed.* If payment is not rendered prior to the close of pre-registration, your registration will be cancelled.
8. *Your onsite registration envelope will include your receipt and tickets for any meals, tours, or medleys that you have selected. "Ticketed" hands-on sessions provide the presenter with a class list; you do not receive a separate ticket for each session. You will receive one "Big Ticket" listing ticketed events.*

## Hotel Registration Information

Discounted rooms are available at the Grand Traverse Resort and Spa until October 20.  
Register early for the best selection:

### Hotel Rooms:

- \$119 per night plus tax and fees
- 1 King bed with a Queen sofa sleeper
- 2 double beds with no sofa sleeper
- Hotel rooms do not have refrigerators.

### Tower Rooms:

- \$149 per night plus tax and fees
- One King with sofa (not a sofa sleeper)
- Two Queen beds with sofa (not a sofa sleeper)
- Tower rooms include refrigerators

### Studio Condo:

- \$119 per night plus tax and fees
- One Queen Bed and sofa sleeper, a kitchenette, and a dinette

### One Bedroom Condo:

- \$149 per night plus tax and fees
- One Queen in a separate bedroom and a sofa sleeper, a kitchenette, and a dinette

### Two Bedroom Condo:

- \$179 per night plus tax and fees
- Two Queen beds in separate bedrooms and a sofa sleeper, a kitchenette, and a dinette
- Two bathrooms

### Three Bedroom Condo:

- \$209 per night plus tax and fees
- Three Queen beds in separate bedrooms and a sofa sleeper, a kitchenette, and a dinette
- Two bathrooms

## Registration Location and Schedule

Registration may be completed onsite at the Grand Traverse Resort lower level. However onsite registration fees are higher in all member categories and will also mean standing in significantly longer lines and less chance of obtaining desired tickets.

**Thursday----- 3:00 p.m. - 6:30 p.m.**

**Friday----- 7:30 a.m. - 7:30 p.m.**

**Saturday ---- 8:30 a.m. - 2:00 p.m.**

## Wear Your Badges

Conference Attendees will receive badges at registration, which must be worn at all conference activities and events.

# Grand Traverse Facts



## Arts

### • **Blackbird Arts**

Blackbird Arts is a non-profit art studio.  
1485 Barlow Street, Traverse City, MI 49686  
(231) 421-8085

### • **Crooked Tree Arts Center**

Located just steps from downtown Traverse City in the historic Central Neighborhood. This beautiful new art center is open to the public with free gallery admission.

322 Sixth Street, Traverse City, MI 49684  
(231) 941-9488  
Monday – Friday from 9 a.m. – 5 p.m.  
Saturdays 10 a.m. – 4 p.m.

### • **Dennos Museum Center**

Traverse City's premier center for visual and performing arts. Visit the permanent Inuit art collection and "hands on" Discovery Gallery.  
Northwestern Michigan College Campus,  
1410 College Drive, Traverse City, MI 49686  
(231) 995-1055

**\$4 Reduced Admission October 27-30.**

**Wear your MAEA conference badge.**

Monday-Saturday: 10 a.m. – 5 p.m.,  
Sunday: 1 – 5 p.m., Thursday: 10 a.m. – 8 p.m.

### • **Gallery Fifty**

Housed in a 130-year-old former asylum, this gallery features an eclectic array of artwork.  
800 Cottageview Drive - Suite 50  
Traverse City, MI 49684  
(231) 932-0775

### • **Interlochen Center for the Arts**

Each year, thousands of artists and arts patrons come to Interlochen to experience world-class educational and cultural opportunities inspired by the scenic beauty of their campus. Interlochen Center for the Arts offers arts education programs for students in grades 3-12 and adults of all ages.  
4000 Highway M-37, Interlochen, MI 49643  
(231) 276-7200

### • **Michigan Legacy Art Park**

Discover the stories of Michigan's cultural and natural history brought to life through art. Thirty acres of wooded preserve offer an art experience and hiking trail that's uniquely "Northern Michigan." Open daylight hours; \$5 Admission  
12500 Crystal Mountain Drive, Thompsonville, Michigan 49683 (231) 378-4963

### • **The Villiage at Grand Traverse Commons**

Tour The Villiage campus and learn about the "beauty is therapy" or simply visit the many shops and galleries.  
830 Cottageview Dr., Traverse City, MI 49684  
Contact The Commons for pricing and hours.

### • **Twisted Fish Gallery**

Specializes in large paintings, with a wide selection of jewelry, ceramic, wood, glass and metal art, and widely known for sculptural garden pieces.  
10433 S. Bayshore Drive, Elk Rapids, MI 49629  
(231) 264-0123

## Eats

Top Eight Places to Eat in Traverse City as per TripAdvisor:

#### 1. **Red Ginger** -

237 E. Front Street, Traverse City 49686  
(231) 944-1733

#### 2. **Amical** -

229 E. Front Street, Traverse City 49686  
(231) 941-8888

#### 3. **Slabtown Cafe & Burgers** -

826 W. Front Street, Traverse City 49684  
(231) 932-1760

#### 4. **Georgina's** -

236 E. Front Street, Traverse City 49684  
(231) 943-15555

#### 5. **Apache Trout Grill** -

13671 S. West Bay Shore Drive, Traverse City 49684 (231) 947-7079

#### 6. **Trattoria Stella** -

1200 West 11th Street, Traverse City 49684  
(231) 929-8989

#### 7. **Bubba's** -

428 E. Front Street, Traverse City 49686  
(231) 995-0570

#### 8. **North Peak Brewing Company** -

400 W. Front Street, Traverse City 49684  
(231) 941-7325



# Grand Traverse Facts

## Theaters

- **State Theatre** -  
233 E. Front Street  
Traverse City 49686  
(231) 947-4800
- **Bijou By the Bay** -  
181 E. Grandview Parkway  
Traverse City 49684  
(231) 486-5222



## Downtown Gallery

- **Americana Gallery**  
224 E. Front St.
- **Angela Schuler Gallery**  
121 E. Front St.
- **Art & Soul Gallery**  
140 E. Front St.
- **Asher Gallery & Framing**  
445 E. Front St.
- **Becky Thatcher Designs**  
234 E. Front St.
- **Crooked Tree Arts Center**  
322 Sixth St.
- **Fusion Fine Art Framing & Gallery**  
114 E. Front St.
- **Glass Artz**  
441 E. Front St.
- **Inside Out Gallery**  
229 Garland St.
- **McMillen's Creative Custom Framing**  
326 E. Front St.
- **Michigan Artists Gallery**  
317A E. Front St.
- **The Corner Loft**  
201E. Front St.
- **The Wooden Gallery**  
116 E. Front St.
- **Wilson's Antiques**  
123 S. Union St.



## Awards Banquet

Location: **Governors' Hall**

Date: **Saturday, October 29**

Time: **6:00 p.m. to 8:00 p.m.**

Celebrate the achievements of fellow MAEA members while enjoying a delightful meal right here at the Grand Traverse Resort.



## Illuminations Gala

*A party to light up the night...*

Close out your MAEA Conference with a party that lights up the night. Dress up to sparkle and shine the night away with dance music and a light show provided by Pure Vibe Productions. Add light to your attire...glow sticks, lights, just get creative with light!

*Light hor d'oeuvres will be provided and a cash bar will be available.*

Location: **Governors' Hall**

Date: **Saturday, October 29**

Time: **8:00 p.m. to Midnight**

Earn your master's in Art Education online while you teach.

Engage your creativity.  
Empower your students.  
Transform your career.



Online  
Education

WESTERN MICHIGAN UNIVERSITY

Gwen Frostic School of Art  
[wmich.edu/online/art](http://wmich.edu/online/art)

# Thursday Night Event

**Crooked Tree Arts Center, Traverse City**

**Thursday, October 27**

**6:00 p.m. - 9:30 p.m.**

**Cost: \$5 in advance (\$8 at the door)**

## Venues:

1. Gallery Walk and Shopping Tour in Downtown Traverse City: All downtown shops and galleries are open until 5:30 or 6:00 p.m. Enjoy a walking tour “on your own” around downtown Traverse City. Then make your way to Crooked Tree Arts Center for our Wine and Cheese Party.
2. The Village at Grand Traverse Commons (formerly the State Hospital grounds): Register for the ticketed one-hour tour of the Grand Traverse Commons 4:00-5:00 p.m. on Thursday, \$15. Or enjoy The Village’s many shops, galleries, and eateries on your own. Then make your way to Crooked Tree Arts Center for our Wine and Cheese Party.
3. Both the Dennon Museum and the Michigan Legacy Art Park might be a great stop either on your way to the MAEA Conference. After enjoying whatever you choose, make your way to Crooked Tree Arts Center for our Wine and Cheese Party.



## Regional Lunch/Empty Bowls: Ice Cream Social

Join us for our Regional Lunch on Saturday and you will be able to do all of these things: eat a lovely lunch, meet your region’s liaisons, network and introduce yourself to other art teachers in your region, enjoy ice cream, receive a lovely bowl handmade by a Michigan high school student. And to top it off, all the proceeds will be donated to a local Food Pantry.



## • Vendors •

We are excited to announce that our vendors will be conveniently located in a ballroom right next to the ballroom where meals and keynote presentations will take place. Attendees will have the opportunity to visit the vendors and learn about the latest, greatest art supplies, colleges, and other resources. Each day you visit, watch for tickets for the vendor give-a-ways in your bag.

**Winners of these gifts from vendors will be announced throughout the day Friday and Saturday. Winners should check in with Julia Tomaro at Vendor Registration to receive your gift.**



**IT  
STARTS  
HERE.™**



- DRAWING**
- FIBERS**
- CERAMICS**
- SCULPTURE**
- PAINTING**
- PRINTMAKING**

**VISUAL ARTS PROGRAM**

All young artists welcome | Grades 7-12  
 Two-week summer sessions from June 28-August 20, 2017  
*Scholarships and Financial Aid Available*

**blue lake**  
 fine arts camp

**bluelake.org**  
**800.221.3796**

50 YEARS 1966-2016




**New Retirees**

If you have just retired and are planning on going to the conference, please let Maureen Roslanic know. We want to honor you and your service to art education at the Awards Banquet on Saturday night.

You will be our guest with a complimentary meal. Maureen can be reached at 616.560.5062 or by email at *mroslanic@gmail.com*.

*Thank you!*



## Student Exhibits

Student Exhibits will be in the Michigan C and D rooms Friday 8:00 a.m. - 9:00 p.m. and Saturday 8:00 a.m. - 3:00 p.m. Shows featured include the Governors' Traveling Show (high school) and the Elementary and Middle School Top 30 State Exhibit. Kids 'n' Clay + 3D will run as a PowerPoint show.



## KIDS 'N' CLAY + 3D

Please send a jpeg of student work as early as possible to Darcy Schreiber at [kidsnclay2016@gmail.com](mailto:kidsnclay2016@gmail.com). Remember that the show includes all 3D artwork and is not limited to clay.

### Guidelines:

- Teachers may submit up to five pieces per level. Only one per student.
- Please do not send more than two images for each piece.
- All pieces should be photographed with a white background.
- Include *Title, Student Name, Grade, School, and Teacher Name* with the images in the same email as the jpeg photos.

**Deadline is October 14, 2016.**



# MAEA 2016 Members' Art Show

## Purpose:

This non-juried art show is a celebration of art educators who are currently producing artwork and would like share to their talents with their peers. Art work will be on display in the Michigan Ballroom C & D along with the Student Show.

## Eligibility:

- Any member of MAEA can submit up to two pieces, two-dimensional and three-dimensional.
- All two-dimensional work must be matted and/or framed and no larger than 30" x 40". Work must be ready for hanging.
- All three-dimensional work should be displayable on a pedestal and weigh no more than 30 lbs. Display cases are not available for jewelry.
- Size and weight restrictions can be waived upon prior approval depending upon availability of space.

## Exhibit Site and Time:

Artwork will be displayed  
Friday 5:00 -9:00 p.m. and  
Saturday 8:00 a.m. -3:00 p.m.

## Delivery of Artwork:

Artwork can be dropped off at Registration during open hours on Thursday or Friday before noon.

## Pickup of Artwork:

Please pick up your art from Michigan C & D after 3 p.m. Saturday or before noon on Sunday.

## To Enter:

Send your name, title, and media of the one or two pieces you would like to display to Suzanne at [suzannebutlerlich@gmail.com](mailto:suzannebutlerlich@gmail.com). All entries must be received no later than October 18, 2016.

## Liability:

It is understood and agreed by all entrants that artwork submitted is at the entrant's own risk. All due care will be exercised in handling artwork by volunteers and MAEA members. No exhibit personnel will be responsible for loss or damage. Artists are advised to carry their own insurance. Submission of work constitutes an agreement by entrant to abide by the rules of the exhibit.

*Contact Suzanne with your questions or concerns.*



## MAEA ARTISANS' GALLERY

Would you like the chance to show and sell your artwork and other handmade items at the MAEA 2016 Conference?

Saturday, October 29, 2016  
6:00 pm - 9:00 pm  
Outside the Governors' Hall



We recognize that a large number of our members are working visual artists, as well as educators. We also know that our members appreciate and are inspired by the work of their colleagues. MAEA is proud to host the Artisans' Gallery at the 2016 Conference in Traverse City. Members will have a space to showcase and sell their works of art and handmade items. This event will be publicized on the MAEA web page and Facebook page as well as during the conference.

Any MAEA member and invited artists may showcase and sell their work. In order to sell your work at the Artisans' Gallery, you must register to participate and also be registered for the conference. Registration as an exhibitor is \$15 per table. Set up will be 5:00 - 6:00 pm and teardown will be from 9:00 - 9:30 pm. Email any questions to [darcyj9@hotmail.com](mailto:darcyj9@hotmail.com). You will receive an email confirmation of your registration.

### MAEA ARTISANS' GALLERY - Exhibitor Form

Name \_\_\_\_\_ Email \_\_\_\_\_  
Address \_\_\_\_\_ City \_\_\_\_\_  
State \_\_\_\_\_ Zip \_\_\_\_\_ Phone \_\_\_\_\_

Description of item(s) (25 words or less)

---

---

---

No. of tables desired \_\_\_\_\_ x \$15 each = TOTAL: \_\_\_\_\_ (Please make check payable to MAEA Artisans' Gallery)

**Payment:** \_\_\_\_\_ Check Enclosed \_\_\_\_\_ Money Order Enclosed

Mail this form and payment to: Darcy Schreiber, 6949 E. Rockview Road, Pickford, MI 49774

I have read and agree to the guidelines listed below.

**Signature** \_\_\_\_\_ **Date** \_\_\_\_\_

### ***By registering for a space at the Artisans' Gallery, seller agrees to the following guidelines:***

- Seller is a 2016 MAEA Conference registrant or invited guest artist.
- Items for sale are limited to handmade, non-commercial products and are not services (e.g. massage, face painting). MAEA reserves the right to reject any reservation for any reason. Rejected reservations will be returned.
- Reservation includes one draped table, with chair, located in the Artisans' Gallery; no other services or items are included. Work for sale cannot exceed the reserved table space.
- All reservation sales are final, no refunds. Payment must be made by check or money order and reservations mailed separately from conference registration.
- MAEA determines table locations by reservation order. *Reservation No. 1 equals Table No. 1.*
- Seller is responsible for shipping/bringing items to conference site and for their table set up and tear down. Seller is also responsible for bringing any cash needed to make change for cash sales.
- Seller accepts responsibility for any sales and transactions, as well as any local, state, and federal taxes or fees.
- Seller refrains from any other sales outside of the Artisans' Gallery during MAEA Conference hours and in its locations.
- MAEA shall not be held liable for personal injury, death, property damage or accident arising out of this event.



# MAEA Conference

Pre-Registration and Ticket Request Form  
67<sup>th</sup> Annual Conference ~ October 27-30, 2016  
Grand Traverse Resort and Spa, Traverse City, MI



## Instructions

- Use a separate form for each person
- Photocopy a completed form for your records
- Register early to avoid disappointment
- Must be postmarked by October 7, 2016
- All receipts from both snail mail and online registration are emailed. Watch for emails from: [conferenceregistrar@miarted.org](mailto:conferenceregistrar@miarted.org)
- You must be a member to attend
- When paying registration online with PayPal or credit card, there is a 3% fee charged.
- Questions?  
Margaret Black: [MAEAregistrar@gmail.com](mailto:MAEAregistrar@gmail.com) or 989-614-1335  
Jane Inhulsen: [inhul2@gmail.com](mailto:inhul2@gmail.com) or 810-444-2585

### Onsite Rates (eff. October 7, 2016)

- **Onsite rates:** Member \$235, Retired \$160, Spouse \$175, Full-Time Student \$150

### Please note:

All Vegan meal options are also gluten free.

- Meals for children can be made by special arrangements and for the cost of hotel meal.
- All meal events require tickets.
- Indicate if attending and total cost.
- Full-time students must be defined as full-time by the schools they attend.
- For special dietary needs and meals for children, please contact the registrar at: **989-614-1335** or [MAEAregistrar@gmail.com](mailto:MAEAregistrar@gmail.com)
- Plated meals will be served within the first 15 minutes of the time designated in the program. Late meals will not be provided.



- Scheduling two ticket sessions at the same time will cancel each other out.
- Do not list non-ticketed workshops.
- Attend all other non-ticketed sessions on a first come basis. They are limited only by room capacity or the request of the presenter as noted in program.
- **Register early!**

- Continued on next page -

⇒ You may also register online at: <http://miarted.org/data/> ⇐

## Step 1: Participant - You must be an MAEA member to attend

**IMPORTANT: YOU MAY NOW INCLUDE YOUR NEW/RENEWED MEMBERSHIP FEE AS PART OF YOUR REGISTRATION CHECK. IF YOU NEED TO RENEW, OR BECOME A MEMBER, FILL OUT THE MEMBERSHIP FORM IN THIS EDITION, AND THEN ADD THE TOTAL TO STEP 7 OF THIS CONFERENCE REGISTRATION FORM. IF YOU ADD A MEMBERSHIP FEE, YOU MUST INCLUDE THE MEMBERSHIP FORM WHEN YOU MAIL IN THIS CONFERENCE REGISTRATION.**

Name: \_\_\_\_\_  Workshop Presenter  
 Handicapped accommodation needed

Address: \_\_\_\_\_

City/St./Zip: \_\_\_\_\_

Phone: \_\_\_\_\_

Email: \_\_\_\_\_

**Membership (check one):**  
 New Member  
 Renewing Member (expiration date before 10/27/16)  
 Current Member (expiration date after 10/27/16)

Member ID: \_\_\_\_\_

Expiration Date: \_\_\_\_\_

Region #: \_\_\_\_\_

## Step 2: Conference Registration Fee

- Active/Renewing/New Member (\$165)
- Retired (\$85)
- Spouse (\$100) (Children must also register for conference and for meals)
- Full-Time Student (\$90)

Step 2: Conference Registration Fee Total \$ \_\_\_\_\_

## Step 3: Tickets

### A) Meals (Mark All Applicable)

#### Thursday

Crooked Tree Art Center Wine & Cheese Party:  
(Tickets \$8 at the door.) \_\_\_\_\_ @ \$5 = \$ \_\_\_\_\_

#### Friday

Breakfast: Breakfast Buffet \_\_\_\_\_ @ \$10 = \$ \_\_\_\_\_

#### DIVISION & ADMINISTRATORS Lunch:

(as well as Retirees and General)

Plated Lunch Chicken \_\_\_\_\_ @ \$12 = \$ \_\_\_\_\_

Plated Lunch Vegan \_\_\_\_\_ @ \$12 = \$ \_\_\_\_\_

Student Plated Lunch Chicken \_\_\_\_\_ @ \$5 = \$ \_\_\_\_\_

Student Plated Lunch Vegan \_\_\_\_\_ @ \$5 = \$ \_\_\_\_\_

#### Dinner:

Plated Dinner Chicken \_\_\_\_\_ @ \$18 = \$ \_\_\_\_\_

Plated Dinner Vegan \_\_\_\_\_ @ \$18 = \$ \_\_\_\_\_

Step 3A: Meals Total (all 4 days) \$ \_\_\_\_\_

### B) TICKETED ONLY: Workshops/Tours (mark all applicable)

Workshop # _____	Fee \$ _____	Workshop # _____	Fee \$ _____
Workshop # _____	Fee \$ _____	Workshop # _____	Fee \$ _____
Workshop # _____	Fee \$ _____	Workshop # _____	Fee \$ _____
Workshop # _____	Fee \$ _____	Workshop # _____	Fee \$ _____
Workshop # _____	Fee \$ _____	Workshop # _____	Fee \$ _____

Step 3B: Tickets Total \$ \_\_\_\_\_

Friday: **Failure:Lab** \_\_\_\_\_ @ \$20 = \$ \_\_\_\_\_

#### Saturday

Breakfast:  
Plated Business Breakfast \_\_\_\_\_ @ no fee

#### REGIONAL Lunch:

(fundraiser - includes handmade bowl)

Plated Empty Bowls - Cobb Salad \_\_\_\_\_ @ \$17 = \$ \_\_\_\_\_

Plated Empty Bowls - Vegan \_\_\_\_\_ @ \$17 = \$ \_\_\_\_\_

#### Dinner:

Awards Banquet Salmon \_\_\_\_\_ @ \$35 = \$ \_\_\_\_\_

Awards Banquet Pork Loin \_\_\_\_\_ @ \$35 = \$ \_\_\_\_\_

Awards Banquet Vegan \_\_\_\_\_ @ \$35 = \$ \_\_\_\_\_

Gala: Illuminations \_\_\_\_\_ @ \$4 = \$ \_\_\_\_\_

#### Sunday

Breakfast: Breakfast Buffet \_\_\_\_\_ @ \$8 = \$ \_\_\_\_\_



# Instructions

## Step 4: Donation

- I wish to make a donation to the State Conference Student Sponsorship Award  
 \$1     \$3     \$5     \$10     \$20     other \$ \_\_\_\_\_     Not this year

Step 4: Donation Total \$ \_\_\_\_\_

## Step 5: SCECHs

- Yes, I would like to pre-register for SCECHs for \$20.00

Step 5: SCECHs Total \$ \_\_\_\_\_

## Step 6: Membership Process

Members may now write one check for membership and conference registration. You must include your completed membership form as well as your conference registration form, if you choose to pay in one check.

Before October 7, 2016, you may renew or become a new member by going to [www.miarted.org](http://www.miarted.org), click on JOIN/RENEW, then click on NAEA/MAEA MEMBERSHIP NEW/RENEW.

- After October 7, 2016, membership must be snail mailed to Annie Howard.

**Membership fees are in addition to registration fees.**

No REFUND/REQUESTS after October 7, 2016

- Refund requests must be made in writing. Emails are not accepted.

## Step 7: Payment Summary

Total from Step 2: Conference Registration Fee	\$ _____
Total from Step 3A: Meals	\$ _____
Total from Step 3B: Tickets	\$ _____
Total from Step 4: Donation	\$ _____
Total from Step 5: SCECH's \$20	\$ _____
Total from Step 6: Membership	\$ _____
[Total from NAEA/MAEA membership form added here]	

**Final Conference Registration Fee Total: \$ \_\_\_\_\_**

All receipts from both snail mail and online registration are emailed. Watch for emails from:  
[conferenceregistrar@miarted.org](mailto:conferenceregistrar@miarted.org)

- Questions? Contact Melissa Hronkin: [m\\_hronkin@hotmail.com](mailto:m_hronkin@hotmail.com)
- Pick up your SCECH packet onsite, near the registration area

• Before October 7, you may renew or join at [www.miarted.org](http://www.miarted.org) (Join/Renew > Become a Member)

• After October 7, membership must be snail mailed to: Annie Howard

- Mail:
  - Membership Form
  - Membership Check

To:

**Annie Howard  
Membership Secretary  
3274 Northmor Drive W  
Adrian, MI 49221**

- Make Conference Registration Check Payable to:  
**MAEA 2016 Conference**
- Conference Registration check may be for steps 2-6, if new/renewing with registration.

- Mail:
  - Registration Form
  - Membership New/Renewed Form (if applicable)

Snail mail registrations to:

**Margaret Black, MAEA Registrar  
PO Box 316  
Waters, MI 49797**

## NAEA/MAEA Strict Registration Procedures

PAYMENT MUST BE INCLUDED to process form & reserve sessions.

- Those without payment will not be processed.
- A confirmation/receipt will be emailed to all registrations that are clearly postmarked on or before October 7, 2016. All other receipts, without an email address will be given out at the conference registration site.
- You will receive confirmation from [conferenceregistrar@miarted.org](mailto:conferenceregistrar@miarted.org) Look for this confirmation and print a copy.

DO NOT MAIL any forms after October 7, 2016.

- Those postmarked after October 7, 2016 are considered LATE and will be processed in order of arrival before the conference opens based on workshops available.
- Onsite rates will be effective as of October 7, 2016.

You may wish to REGISTER EARLY & have your district reimburse you later to avoid conflicts or closed sessions.

**Questions? Email Jane Inhulsen: [inhul2@gmail.com](mailto:inhul2@gmail.com) or Margaret Black: [MAEAregistrar@gmail.com](mailto:MAEAregistrar@gmail.com)**



# MAEA Conference

2016 Special Conference Registration Form  
67<sup>th</sup> Annual Conference ~ October 27-30, 2016  
Grand Traverse Resort and Spa, Traverse City, MI

All special guests must complete this Contact Information section before sending this to the MAEA 2016 Conference Registrar, Margaret Black.

⇒ You may also register online at: <http://miarted.org/data/> ⇐

## This form is for you if you are...

## Your Contact Info

If you are any of these Special People, please check the appropriate boxes below and fill out the contact information to the right.  
Then follow the instructions for mailing in your requests.

Name: \_\_\_\_\_  
Title: \_\_\_\_\_  
District: \_\_\_\_\_  
Address: \_\_\_\_\_  
\_\_\_\_\_  
City/St./Zip: \_\_\_\_\_  
Phone: \_\_\_\_\_  
Email: \_\_\_\_\_

1. A **Designated Guest** of award recipient \_\_\_\_\_ (Awardee)  
(One Designated Guest per Awardee – receives one free ticket)

**Saturday Meal Selection:**  
Awards Banquet Salmon \_\_\_\_\_  
Awards Banquet Pork Loin \_\_\_\_\_  
Awards Banquet Vegan \_\_\_\_\_

## Instructions

Enclose this form and payment of total amount.  
Make payable to:  
**MAEA 2016 Conference**  
Send to:  
**Margaret Black, MAEA Bookkeeper**  
**PO Box 316**  
**Waters, MI 49797**  
Questions? [MAEAregistrar@gmail.com](mailto:MAEAregistrar@gmail.com)  
**Your Total Fee: \$ \_\_\_\_\_**

2. A **Guest** of an award recipient \_\_\_\_\_ (Awardee)

**Saturday Meal Selection:**  
Awards Banquet Salmon \_\_\_\_\_ @ \$35 = \$ \_\_\_\_\_  
Awards Banquet Pork Loin \_\_\_\_\_ @ \$35 = \$ \_\_\_\_\_  
Awards Banquet Vegan \_\_\_\_\_ @ \$35 = \$ \_\_\_\_\_

3. A **School Administrator** with \_\_\_\_\_ (Art Educator)

**Friday Meal Selection:** Administrators' Lunch: Plated Lunch Chicken \_\_\_\_\_ @ \$12 = \$ \_\_\_\_\_  
Plated Lunch Vegan \_\_\_\_\_ @ \$12 = \$ \_\_\_\_\_

4. A **Spouse** of an attending member \_\_\_\_\_ (Member)

**Spouse Registration Fee** \_\_\_\_\_ \$100  
**Meal Selections (Mark all applicable):**

### Thursday

Crooked Tree Arts Center Wine & Cheese Party:  
(Tickets \$8 at the door.) \_\_\_\_\_ @ \$5 = \$ \_\_\_\_\_

### Friday

**Breakfast:**  
Breakfast Buffet \_\_\_\_\_ @ \$15 = \$ \_\_\_\_\_

**Lunch:** Plated Lunch Chicken \_\_\_\_\_ @ \$15 = \$ \_\_\_\_\_  
Plated Lunch Vegan \_\_\_\_\_ @ \$15 = \$ \_\_\_\_\_

**Dinner:** Plated Chicken \_\_\_\_\_ @ \$25 = \$ \_\_\_\_\_  
Plated Vegan \_\_\_\_\_ @ \$25 = \$ \_\_\_\_\_

**Friday: Failure:Lab** \_\_\_\_\_ @ \$20 = \_\_\_\_\_

### Saturday

**Breakfast:**  
Plated Business Breakfast \_\_\_\_\_ @ \$15 = \$ \_\_\_\_\_

**Lunch: (includes handmade bowl)**  
Empty Bowls - Cobb Salad \_\_\_\_\_ @ \$17 = \$ \_\_\_\_\_  
Empty Bowls - Vegan \_\_\_\_\_ @ \$17 = \$ \_\_\_\_\_

**Dinner:**  
Awards Banquet Salmon \_\_\_\_\_ @ \$35 = \$ \_\_\_\_\_  
Awards Banquet Pork Loin \_\_\_\_\_ @ \$35 = \$ \_\_\_\_\_  
Awards Banquet Vegan \_\_\_\_\_ @ \$35 = \$ \_\_\_\_\_

**Gala:**  
Illuminations \_\_\_\_\_ @ \$4 = \$ \_\_\_\_\_

### Sunday

**Breakfast:**  
Breakfast Buffet \_\_\_\_\_ @ \$13 = \$ \_\_\_\_\_

### Spouse Payment Summary

Spousal Registration Fee \$ \_\_\_\_\_

Total from Meals \$ \_\_\_\_\_

**Final Conference Registration Cost:**  
\$ \_\_\_\_\_

### Please note:

All Vegan meal options are also gluten free.

- Meals for children can be made by special arrangements and for the cost of hotel meal.
- All meal events require tickets.
- Indicate if attending and total cost.
- For special dietary needs and meals for children, please contact the registrar at: **989-614-1335** or [MAEAregistrar@gmail.com](mailto:MAEAregistrar@gmail.com)
- Plated meals will be served within the first 15 minutes of the time designated in the program. Late meals will not be provided.

# Conference Information and Policy

Online Registration opens September 1, 2016 and will close October 7, 2016.

You must be a member of NAEA/MAEA and pay a conference registration fee to attend this conference, unless you are a guest. (See Special Registration guidelines.)

## Membership

**You must be a member of NAEA/MAEA to attend this conference.**

If you are not, please complete the membership form on the back page of this edition. You may also go to the MAEA website [www.miarted.org](http://www.miarted.org), click on Join/Renew and follow the directions. If you are joining after the deadline listed on the conference registration form, then you must MAIL this application and your check to our Membership Secretary: *Annie Howard, 3274 Northmor Drive W Adrian, MI 49221; ahoward@adrian.k12.mi.us*

**If you renew after August 1, please retain a copy of your confirmation from NAEA.**

If you are a new or renewing member, your membership fee can now be included in your conference registration fee. Please remember to fill out and include the membership application.

## Pre-Registration Notification

All members have the option of registering through the traditional mail process or registering online at <http://miarted.org/data/>. **The online registration information includes TICKETED or LIMITED sessions only.** Non-ticketed sessions do not require pre-registration.

Everyone pre-registering with a postmark not later than **October 7, 2016 will be emailed a registration receipt. You must include your email in the registration, either online or mailed.** If you do not include an email where you can receive the receipt, then you will receive your receipt at the conference when you pick up your registration materials. *All receipts from both snail mail and online registration are emailed.*

**Watch for emails from: [maeaacctng@gmail.com](mailto:maeaacctng@gmail.com) and [maeaeregistrar@gmail.com](mailto:maeaeregistrar@gmail.com).**

**YOU MUST PUT THIS EMAIL ADDRESS IN YOUR ADDRESS BOOK TO RECEIVE THE EMAILED RECEIPT. NO RECEIPTS WILL BE MAILED.**

Note: Most ticketed workshops will sell out very quickly. Registrations postmarked after the pre-registration deadline of October 7, 2016 will be handled in order of their arrival with receipts handed out at the conference registration site.

## Pre-Registration Payment

**Payment is required at the time of both snail mail and online registration.** Several options are available: check sent with snail mail registration, or Pay Pal or with a credit card with online registration. Registration payment onsite will be \$75 higher. There will be no admission to the conference without complete payment. If your school district or university plans to pay your registration, and does not make payment prior to onsite check in, you will be required to pay the entire fee to participate in the conference. It is your responsibility to then seek reimbursement from your district or university. **If payment is not received by October 7, 2016 your pre-registration will be canceled. Any ticketed sessions you have reserved will then become available for onsite registration.** If there are extenuating circumstances, please contact Jane Inhulsen at [inhul2@gmail.com](mailto:inhul2@gmail.com) or Margaret Black at [MAEAeregistrar@gmail.com](mailto:MAEAeregistrar@gmail.com) no later than the close of online registration

## Special Registration

A **Special Registration** form for School Administrators, guests of award recipients, and guests of members is provided in this edition as well as online. These special guests may fill out the Special Registration form in this edition or online. This form will allow them to reserve tickets for Administrators' Luncheon, the Awards Banquet as well as a meal selection for the same, or a ticket for the Saturday night Illuminations Gala.

Spouses who are attending those meals or events listed above should register as a Special Guest.

### Registration Hours

Thursday: 3:00 p.m. – 7:30 p.m.

Friday: 7:30 a.m. – 7:30 p.m.

Saturday: 8:30 a.m. – 2:00 p.m.

## Onsite Registration Location

Registration may be completed onsite at the Grand Traverse Resort lower level upon arrival. However, the **onsite registration fee is \$75 higher** in all member categories. This also means standing in line longer with less chance of obtaining desired ticketed workshops.

## Sessions

Some special guest artists, workshops, tours and events have restrictions. Please note: TICKETED sessions in the program are due to fees, room size and presenter requests. Non-ticketed sessions will be a first come, first served at the door of the session and should NOT be listed on your registration form. **Actual TICKETS** are provided in your onsite registration envelope for tours, meals and medleys. Class lists are provided for the session presenter and for all other ticketed sessions.

**Name tags need to be worn at all times.** The name tags give you access to the Vendor area, workshops, tours and meals. Tickets for ticketed events must be presented at the time of entry.

## Refunds

It is NAEA/MAEA Policy that all requests for refunds are submitted in writing, stating the reason that you expect a refund. A \$50 processing fee is charged for all cancellations [regardless of the date requested].

All TICKETED events are non-refundable. Executive Board will consider refund requests for dire circumstances, excluding the \$50 Processing fee and non-refundable events.

## Conference Materials for Participants

Registration will be held at the Grand Traverse Resort lower level. All materials may be picked up at the registration site. Look for all open and canceled workshop events in this area as well.

Conference name tags must be worn everywhere! This includes the Vendor area, workshops, meals, and tours. You will be denied access without your name tag!

## Conference Materials for Presenters

Presenters must check in at the presenter registration area, located near the conference registration in the Grand Traverse Resort lower level. You will pick up workshop information and event materials, presenter information and gift bag there.

## Important Advisory

Presenters graciously share their ideas and time for your benefit. Presenters have enough materials on hand for the limit listed in their session information. Please respect these limits. Arrive on time. Attend the entire session. Display professional and courteous behavior at all times.

Student Classification means FULL-TIME students

## Open Meeting Policy

NAEA/MAEA policy states all sessions held within the framework of its conference are open to all NAEA/MAEA members who are registered for the conference. The only exception is for ticketed functions, including meals, workshops or receptions that may be sponsored by other groups.

## Tax Deduction

To qualify for a tax deduction, a person must be registered for the conference. Treasury regulation No.1.1625 permits income tax deduction for educational expenses [registration fees and cost of travel, meals, and lodging] undertaken to:

1. Maintain or improve skills required in one's employment or other or business; **OR**
2. To meet express requirements of an employer or law imposed as a condition to retention of employment, job status, or rate of compensation. [IRS Publication #508, U.S. Government printing office] Please retain your pre-registration confirmation and receipts for your records and reimbursement from your district.



Jane Inhulsen  
Executive Secretary  
18674 Goldwater Road  
Westfield, IN 46062

Return Service Requested

PRSR STD  
U.S. POSTAGE  
**PAID**  
ALLIED MEDIA

# NAEA/MAEA Membership Application

**Membership with MAEA is membership to both NAEA and MAEA:**

Mail to: MAEA Membership Chair: Annie Howard, 3274 Northmor Drive W, Adrian, MI 49221

-OR- Membership online: [www.miarted.org](http://www.miarted.org) click on *All Members Services*, then click on *Become a Member*

## Please Print All Information Below:

New  Renewal - I.D. Number \_\_\_\_\_

Name: \_\_\_\_\_

Address: \_\_\_\_\_

City/St./Zip: \_\_\_\_\_

Home Phone: (\_\_\_\_\_) \_\_\_\_\_

Email: \_\_\_\_\_

MI County you teach/work in: \_\_\_\_\_

School District: \_\_\_\_\_

Work: (\_\_\_\_\_) \_\_\_\_\_ Fax: (\_\_\_\_\_) \_\_\_\_\_

## Membership 104/204

Categories: Dues:

Active \$95

Associate \$95

Retired \$65

First Year Professional \$80

Full-Time Student \$45

School: \_\_\_\_\_

Graduation Date: \_\_\_\_\_

Institutional \$220

SUB TOTAL \_\_\_\_\_

Subscription Option:

Studies in Art Education \$20

TOTAL \_\_\_\_\_

Students: Attach photocopy of current student I.D.

## Please check ONE professional level where you spend over 50% of your professional time:

Elementary  Middle Level  Secondary  Museum  Higher Ed

Supervision/Administration  Full Time Student  Retired Member

## Payment Information

Check Enclosed -- **PAYABLE TO NAEA** (Tax deductible) 501 C3 Membership

Charge --  VISA  MasterCard

Credit Card Number \_\_\_\_\_ Expiration Date \_\_\_\_\_ 3-Digit Security Code \_\_\_\_\_

Signature \_\_\_\_\_ Charge by phone 1(800) 299-8321

Membership dues include \$25 for a membership subscription to Art Education and \$15 for a membership subscription to NAEA News. A separate rate is established for non-member subscriptions.