

Lansing 2014



Michigan Art Education Association

President

Lani Warner-Yuen

Past President

Amy Marsh

President Elect

Ren Hullender

Vice President

Adrienne DeMilner

Executive Secretary

Jane Inhulsen

Executive Council

Tanya Lockwood, *Treasurer*

Susan Stratton, *Secretary*

Christopher Bruce, *Membership*

Cyndi Koppelman, *NAEA Delegate*

Website: www.miarted.org
Contact: inhul4@comcast.net

MAEA ArTeacher is published three times per year: January, June, and September by the Michigan Art Education Association. The Winter publication is in newsletter format with the full edition posted on our website. The Fall and Spring/Summer published editions are both full and posted on the website.

Annual Membership includes membership and publications for both the National Art Education Association and the Michigan Art Education Association: \$95 [Active Membership], \$95 [Associate], \$65 [Retired], \$80 [first year Professional], \$45 [student], \$220 [Institutional].

Post Master send address changes to: Jane Inhulsen, 8149 Grand Valley Drive, Grand Blanc, MI 48439

Deadlines for submitting material to the MAEA ArTeacher:
April 1 - Spring/Summer; July 1 - Fall, November 1 - Winter.
To submit please email articles to: inhul4@comcast.net.

Inside

- 3 Keeping "Art in the Heart"
- 4 My Trip to Wonderland
- 4 Youth Art Month
- 5 2014 Conference, Lansing
- 6 The Governors' Traveling Show
- 8 Retired Division News
- 9 Membership Report
- 9 Queen of Hearts Cover Art!
- 10 2014 Summer PD at Finlandia
- 12 Membership Application

The Michigan Art Education Association's mission is to promote quality visual arts education through leadership, service and professional development.

SRC SERVICE REPRODUCTION CO.
ART SUPPLIES

340 Summer Ave NW
Grand Rapids, MI 49504
Phone 1.616.451.2901
Toll Free 1.800.438.0438
Fax 1.616.451.9149

Contact us for a FREE catalog!
www.servicereproduction.com



Keeping “Art in the Heart” to help “Frame Our Future”

Lani Warner-Yuen
MAEA President
laniwarner@hotmail.com

The MAEA 2014 Fall Conference in Lansing was a wonderful collision of professional learning and fun! I would like to thank the 2014 conference co-chairs, Kerry Shadbolt, Jon Gere, and Jill McKillips. These individuals lead a team of dedicated art educators to plan and implement the conference for over 500 art educators in our state! I would like to thank you for your time and service to further art educator professional development in our state. In addition to the outstanding conference team, I would also like to thank the MAEA Registrar, Margaret Black and Executive Secretary, Jane Inhulsen for countless hours supporting the conference team, working on registration, and publications of the MAEA.

The slogan of fall conference “Art in the Heart” was prevalent throughout the conference. There were keynote speakers such as Leslie Donaldson, Director at Interlochen College of Creative Arts, who presented to school administrators about the positive impact the arts have on developing a strong school and community. There were different leaders of the MAEA and NAEA who led a discussion about being a leader not only in the arts, but also in greater academia. Amazing hands-on workshops on a huge variety of topics and media allowed art educators to feel like a student again. Vibrant conversations were infectious and strangers became friends through making strong connections. There were so many art educators feeding their own creative spirits that their passion for art, whether creating it or teaching it to others, was outwardly apparent. As the conference wrapped up, all who participated felt a renewed passion for advancing art education in some capacity.

The excitement I have when returning from an outstanding conference is always a high point in my school year. Keeping the positive momentum going through the remainder of the school year can be a challenge. One way that I have found to keep “Art in the Heart” is to start planning for next year. I make sure I convey to my administration how thankful I am for the opportunity to attend the MAEA conference. I immediately start to use some of the things I have learned at the conference and invite my principal into the art room to watch the results. Finally, I start to plan a presentation—or in other words, I start to frame the future.

The slogan of the 2015 Conference in Grand Rapids is “Framing the Future” and will include thought provocative keynote speakers, workshops, and other innovations to help art educators not only frame their own futures, but their students’ futures as well. I encourage you to consider presenting at the 2015 conference. Every one of us has something to share, which will help our colleagues grow professionally.

January 2015 will make the beginning of my second year serving as your MAEA President. As I reflect on the past year, there are many things that I have found successful and some areas that need improvement. One of the areas that needs improvement is the method and ease of communicating with members via our website. In 2015, the MAEA Council and Executive Board will be working with our Webmaster to update and upgrade our website. More exciting services will be rolled out in the coming year as well. Thank you for your support of the MAEA and I look forward to further serving you.

**SPARK
THEIR
FUTURE.**

KCAD
Kendall College of Art and Design
of Ferris State University

800.676.2787
kcad.edu

The greatest thing you can do with your own talent is to nurture someone else's.

Discover the power of a KCAD education today at **kcad.edu**



My Trip to Wonderland

Adrienne DeMilner
MAEA Vice President
Adrienne616@gmail.com

So another conference attended and I'm filled with wonderful ideas and new energies for teaching. Our theme this year was "Art in the Heart" with a sub-theme of Alice in Wonderland. Stepping through the looking glass of the Lansing Conference Center, I truly felt like Alice herself. There were so many adventures to experience, interesting people to meet and amazing friends to make. My personal highlights included a presentation by Teckla Rhoads, GM Global Design Director, who spoke about the many opportunities for careers in the arts; a talk by Craig Mitchell Smith, a Lansing area glass artist who has a successful art business; and our own Ren Hullender, MAEA President- Elect, who shared a unique community based art project. Other perks included reconnecting with old friends, sharing best practices and of course the Saturday night event! All of these adventures would not be possible without the efforts of the many volunteer members of MAEA.

My experience makes me hopeful for the future of art education here in Michigan and I feel like the adventure should be shared with more art teachers around the state. I urge you all to invite a non-member to check out our organization and begin their own adventure with MAEA. In the upcoming months, I plan to send out some advocacy materials to the Regional Liaisons to distribute to area district art departments. I hope we can build our membership and become one of the strongest State Art Education Associations in the country. That may seem like a lofty goal, but it is certainly attainable. We have some exciting events unfolding around the state and I would like to engage more of our colleagues in these experiences. Think about talking to just one person this year that teaches art in your area and share a positive experience you have had with MAEA. It's time for our friends to share the adventure with us...



Youth Art Month

Carolyn Steenland, YAM Chair
csteenland@tricountyschools.com

March is traditionally Youth Art Month for many states across the country. There is a Flag Design Contest for March and the winner will have their flag shown at the National Art Conference in New Orleans. "Art Builds Bridges" is the theme for the flag, which seems to fit here in Michigan very well! Winners will be chosen in January and their design made into a flag.



Art in the Heart of Michigan Art Education Association

2014 Conference, Lansing

Kerry Shadbolt, Jill McKillips, Jon Gere, Conference Co-Chairs

What an exhilarating weekend November 13-16 has been! It was a pleasure and an honor to co-chair the 2014 MAEA Annual Conference in Lansing. Jon Gere, Jill McKillips, and I have been planning for over a year and a half, weaving together a broad spectrum of workshops, speakers, and events. Our goal has been to provide the best conference we were capable of doing. Over the weekend, 511 members attended the four-day extravaganza of professional development. It was an inspiring event, created to "To promote Integrity, Integration, & Advocacy in the Heart of Art Education."

Our team worked to recruit fifteen different speakers who gave keynote sessions ranging from creativity, advocacy, illustration, community building, leadership, and the new national core arts standards. We selected people who are passionate about art and education, had strengths that we all could learn from, and provided a different perspective from our own. We felt that multiple perspectives validate and strengthen us and can challenge us to see our practice, hence propelling us toward a bright future.

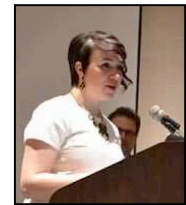


Thursday night we saw our MAEA friends begin to filter in from around the snowy state. Activities for the night featured offsite fun-filled, hands-on workshops at Michigan State University's Kresge Art Center. Linda Beeman shared a bit of her experiences about Japanese woodcut printing. Following the workshops, we enjoyed touring the modern and futuristic Eli and Edythe Broad Art Museum while socializing and catching up with familiar MAEA faces.

Friday started off with Division Level Breakfast meetings as well as the Administrator's Breakfast. Advocate Leslie Donaldson followed by GM's Teckla Rhoads provided a one-two punch of arts importance providing statistics that the visual arts are both relevant to community growth and success, as well as a vital part of industry. At lunch, Craig Mitchell Smith spoke about how passion and drive can take someone a long way with art. During the day, sessions by Ren Hullender, September Buys, and Nancy Walkup reinforced that leadership was alive and well with NAEA/MAEA. Ren's panel discussion provided inspiration and encouragement to those who dream big with MAEA/NAEA. Jen Bubp and Anna Beelke shared about their community of arts. The end of the evening culminated with the MAEA Members' Show reception

featuring a session about keeping art in our hearts led by Jerry Catania. Following Jerry's session, we enjoyed a cocktail hour featuring local band Delicious Bass.

Saturday morning, Lani Warner-Yuen led the Business Breakfast that featured NAEA President Dennis Inhulsen and September Buys, who explained the key points of integrating the new national core arts standards. Saturday's Region Luncheon was a way for area teachers to catch up and reconnect. The Student Luncheon, led by Laura Todd, featured two newly hatched art teachers, Emily Finan and Layna Lesnau, who shared tips about their practice, and NAEA Emeritus Art Educator, Harvey Goldstein. Punya Mishra's sessions spoke to attendees that creativity is valued highly by math and science experts and can be applied to technological practices. Karl Gude's sessions on infographics and storytelling were dynamic and engaging. Illustrator Kate Darnell showed off CKMY color pencil techniques and filled us in on business as well as copyright concerns. Gijsbert (Nick) van Frankenhuyzen reflected on the beauty and nature of Michigan, which is the heart of his illustrative works. Mark Chatterley's sessions hit on his ability to seek creativity from mystery and how to center one's self amidst chaos.



One of the highlights of the weekend was the Kingdom Hearts Gala that featured guests who socialized and danced adorned in Wonderland costumes. Jillian Steele coordinated fabulous area craftspeople that sold their wares in the pre-function area of the Radisson as dancing to the excellent mixing of DJ Tony Neve continued until around midnight.

People created necklaces as part of the Fusing "Fun"raiser guided by Eileen Sturm. She worked all day Friday to lead the event, raising \$645 toward the Greater Lansing Food Bank and for student scholarships while teaching attendees about fused glass. Delphi Creativity Glass Center was kind enough to fire the pendants for us in their glass kilns.

Throughout the weekend, Maureen Roslanic (Service Reproductions Co.) worked tirelessly as RAEA Chairperson. She helped to raise \$625 for student scholarships with the Silent Auction at the Gala and \$600 through the Garage Sale. \$296 was collected through registration scholarships making a grand total of \$1,521 raised this conference to assist our pre-service teachers!

Continued on page 6...

...Continued from page 5

We would like to thank our registration team comprised of Margaret Black, Jane Inhulsen, and Christopher Bruce, who remained cheerful and friendly the whole weekend. Big thanks go out to Tanya Lockwood for her accounting prowess and Lani Warner-Yuen for her leadership at the helm. Suzanne Butler-Lich was our great cheerleader and mentor this year, continually steering us in the right direction. Julius Kusey and Julia Tomaro were an incredible team driving distances for meetings, supporting, and guiding the steering committee, and organizing the Vendors. Maureen Roslanic has been an "honorary co-chair," driving miles and miles to support our little team. Susan Brewster, Maureen Roslanic, and Jill McKillips coordinated with Michelle Word to organize a lovely Thursday night at the Broad Museum. Sandra Pethic was a letter-writing dynamo, gaining the conference sponsorships from schools across the state. Betsey Welfare was our photo queen along with co-pilot Darcy Schreiber, who also put together the Kids 'N Clay presentation. Kari Jones helped with coordination of the art shows and Jayne Brown assisted in signage coordination. Kim Cairy, Kathy

Heystek, and Heidi Irvine put together a fantastic gala. Dean Wilson designed an excellent logo and Sarah Schumacher created our cool cover for the fall ArTeacher and onsite guide.

One of the pleasures of being co-chairs has been to network with inspiring people from the Lansing area and beyond. Bringing great minds together in the state's capitol city has brought us great excitement. This event was a success due to the participation of many, many people. Without YOU, we would have no conference. Learning is at the center of the conference. It is humbling to work with such great master artists and teachers. This journey has been thoroughly amazing. Each day, we strive to do our best. As we exit the process, we look forward to next year and Grand Rapids. Sharon Stratton, Christopher Bruce, and Tricia Erickson are vibrant leaders, all of which will have a lot to lend to next year's adventure. Hopefully we will see each of you next October, where we look forward to being more passive listeners. Until then, we will strive to remember that each moment spent with another person is a chance to make their life better, richer, and fuller.

Sincerely, Your 2014 Lansing Conference Co-Chairs



The Governors' Traveling Show

Michael Heinz
MYAF Visual Art Exhibit Co-Chair
mheinz@fruitport schools.net

Dean Wilson
GTS Schedule Coordinator
dwilson@webbervilleschools.org

The Governors' Traveling Show (GTS) is a traveling exhibit of 30 pieces of 2-D high school artwork selected from the annual Visual Art Exhibit held each year during the Michigan Youth Arts Festival. This work reflects some of the very finest and most creative work produced by our state's secondary art programs. The exhibit is meant to serve both as an inspiration and as a very strong tool to advocate the importance of our visual arts curriculum.

Any K-12 art teacher is welcome to request to exhibit the GTS in their district or community. You need not have a student in the actual exhibit to host it. It is a wonderful tool to demonstrate to anyone who views it why the visual arts are an important part of each child's educational experience.

The show is housed in three, heavy-duty, wheeled road cases. They measure 14" x 31" x 38" and have handles to make them easy to roll and lift. The cases fit easily in the back of a mini van or similar vehicle. Each piece is framed, labeled and ready to hang or go on easels. Generally, each teacher using the GTS needs to pass the cases on to the next person requesting it. An MAEA member is in charge of coordinating the travel schedule. Please consider hosting the GTS in your district. It can be an outstanding advocacy tool.

enter our Mixed Media Contest



Sponsored by Blick Art Materials
in partnership with Artsonia.

IN BRIEF:

- Entries will be accepted from K-12 students during the 2014-2015 school year.
- Entries must be received by April 15, 2015.
- An Artist's Statement (50 words or less) that completes the statement, "With Art I Can ..." must accompany each artwork.

Complete rules and details are available at DickBlick.com/mixedmediacontest.

Awards

- Recipients of five Gold Awards in each grade division will each be awarded a \$100 Blick Art Materials gift coupon. Each Gold Award recipient's school will receive a \$200 Blick Art Materials gift coupon.
- Recipients of 10 Silver Awards in each grade division will each be awarded a \$50 Blick Art Materials gift coupon. Each Silver Award recipient's school will receive a \$100 Blick Art Materials gift coupon.
- Teachers of all entrants will be entered into a random drawing for a \$200 Blick Art Materials gift coupon for their school.

This new contest invites students in grades K-12 to express their experiences and accomplishments through art. As educators we are aware of the enduring benefits that art provides students — creativity, confidence, communication, and more — now it's their turn to speak out! Selected artworks by finalists will be reproduced as part of a complimentary 16" x 20" Art Advocacy Poster Set available to attendees of NAEA affiliated conferences in 2015 and as a downloadable digital slideshow.



Engage your creativity.
Empower your students.
Transform your career.



Earn your master's in Art Education online while you teach.

Secure your professional certification and engage with students and professors who love teaching art as much as you do. Empower yourself with the skills in research and practice that can give you a voice in the important decisions that affect you, your students and your career.

Gwen Frostic School of Art
wmich.edu/online/arteducation



Retired Division News

Maureen Roslanic
Retired Division Chair
mroslanic@yahoo.com • cell: 616-560-5062

As I write down my thoughts for the ArTeacher newsletter from the 2014 Fall MAEA Conference "Art in the HeArt of Michigan," in Lansing, it is snowing and beautiful snowflakes melt away forming natural art. More snow yet another day.

Many retired art teachers joined us for the many activities at the 2014 fall conference. There were many keynote speakers planned and many presenters. The "Annual Garage Sale" on Saturday earned \$625.00 for the Student Scholarship Fund. Thank you to the garage sale workers who helped me: Suzanne Butler Lich, HJ Slider, Candace DeTone, Michael Phillips, Mary Miller, and Chris Hesch. Of course, I need to thank and show appreciation to the many wonderful MAEA members who donated.

We had the "Silent Auction" planned for after the Saturday Evening Gala. All money goes to the Student Scholarship Fund. We raised more then \$600 for that also. Thank you for all the Yarn Bombing art and items donated. Thank you everyone for all the help, it is greatly appreciated.

On Sunday we once again had the Masters' Medley with many art lessons to give away. This event was beneficial to new teachers and others who need new ideas. The Masters' Medley is ticketed and the money also went to the Student Scholarship Fund. The dedicated retirees that presented were: Michael Phillips, Zane Balk Russell, Harvey Goldstein, Mary Miller, Robyn Bomhof, HJ Slider, Kathy Phelps-Rusche, and Maureen Roslanic.

We still will be contacting those interested in the mentorship program, retirees working with new teachers. This is just beginning and Emily Finan is helping us to grow.

Thank you everyone for helping and donating time, items and energy. Please sign up with Candace DeTone or me if you would like to be involved and help with these events next year!





Membership Report

Christopher Bruce
Membership Secretary
bruceachristopher@gmail.com

NAEA pARTners

The first-ever pARTners Membership Growth Rewards Program brought in 370 new members, thanks to the 36 participating states and 280 member recruiters.

Through hard work, dedication, and member support, the Michigan Art Education Association (MAEA) won first place, recruiting 39 new members! Congratulations, Michigan! MAEA was recognized during the 2014 Delegates Assembly meeting and the General Session held at the 2014 NAEA National Convention in San Diego, CA, March 29-31.

The 2015 pARTners program is already underway and there is still time to refer members. Every time a new member lists you as the referral you are entered to win a \$500 Blick gift card, NAEA conference registration, and more.

The #1 reason new members join is because they were personally invited by someone they know.

Resources to help recruit new members can be found at <http://tinyurl.com/growmembers>. Together we can grow MAEA and bring the trophy back home again.

2014 Membership by Month:

January	813	June	790
February	810	July	799
March	810	August	801
April	801	September	744
May	796	October	810

Queen of Hearts Cover Art!

Jill McKillips
2014 Conference Co-Chair

This year's Fall ArTeacher and conference booklet cover art was digitally drawn by Sarah Schumacher, a pre-service art educator. Sarah graduated with a BFA last spring from Michigan State University with a Graphic Design concentration and Advertising Design specialization. She is currently completing her fall semester teaching internship at Beechview Elementary School in the Farmington Public School District. She will begin her secondary teaching internship at North Farmington High School during the spring semester.

Sarah's experiences have shaped her as an artist. In 2012, she participated with Michigan State University's "History of Fine Arts and Music" study abroad program in Austria. Sarah also visited four cities in China last summer with Global Educators Cohort Program at Michigan State University. She worked for two years as a Technical Intern for the College of Education at Michigan State University and worked as an Educational Student Docent Intern for the Eli and Edythe Broad Museum of Contemporary Art in East Lansing, MI. Sarah also represented the student chapter of The Michigan Education Association (SMEA) at Michigan State University as the Publicity Chair and Webmaster. Outside of the university setting, Sarah worked as a graphic design intern for Jones Land and LaSalle in Austin, TX.



All of Sarah's experiences have molded her into the fine teacher/artist she has become. Many thanks to Sarah for sharing her graphic talents with us at MAEA, we look forward to seeing more amazing work from her in the future.

2014 Summer PD Workshops at Finlandia



FRAMING THE FUTURE

MAEA FALL CONFERENCE 2015

October 15-18, 2015



ARTDEPT@GVSU.EDU

(616) 331-3486

1105 CALDER ART CENTER

ALLENDALE, MI 49401

ART EDUCATION

ART HISTORY STUDIO ART:

CERAMICS GRAPHIC DESIGN

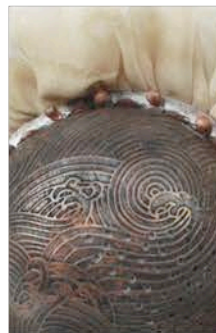
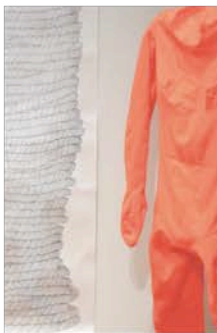
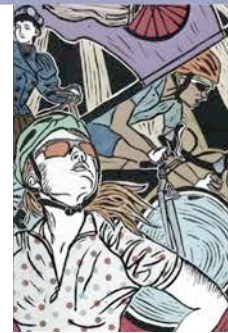
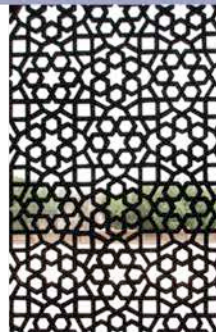
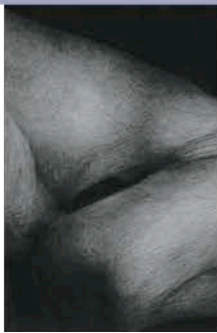
ILLUSTRATION PAINTING

JEWELRY / METALSMITHING

PRINTMAKING SCULPTURE

VISUAL STUDIES

WWW.GVSU.EDU/ART



© 2014 GRAND VALLEY STATE UNIVERSITY

NAEA/MAEA Membership Application

Membership with MAEA is membership to both NAEA and MAEA:

Mail to: MAEA Membership Chair: Christopher Bruce, 2630 Northvale Dr. NE Apt. 102, Grand Rapids, MI 49525
-OR- Membership online: www.miarted.org click on *All Members Services*, then click on *Become a Member*

Please Print All Information Below:

New Renewal - I.D. Number _____

Name: _____

Address: _____

City/St./Zip: _____

Home Phone: (_____) _____

Email: _____

MI County you teach/work in: _____

School District: _____

Work: (_____) _____ Fax: (_____) _____

Membership 104/204

Categories: Dues:

Active \$95

Associate \$95

Retired \$65

First Year Professional \$80

Full-Time Student \$45

School: _____

Graduation Date: _____

Institutional \$220

SUB TOTAL _____

Subscription Option:

Studies in Art Education \$20

TOTAL _____

Students: Attach photocopy of current student I.D.

Please check ONE professional level where you spend over 50% of your professional time:

Elementary Middle Level Secondary Museum Higher Ed

Supervision/Administration Full Time Student Retired Member

Payment Information

Check Enclosed -- **PAYABLE TO NAEA** (Tax deductible) 501 C3 Membership

Charge -- VISA MasterCard

Credit Card Number _____ Expiration Date _____ 3-Digit Security Code _____

Signature _____ Charge by phone 1(800) 299-8321

Membership dues include \$25 for a membership subscription to Art Education and \$15 for a membership subscription to NAEA News. A separate rate is established for non-member subscriptions.

Membership Categories:

Active: Art teachers, Directors of Art Education programs, or those engaged in pursuits closely related to the field. Provides all the benefits of the membership.

First Year Professional: Recent graduates entering their first year of teaching. Valid for one year. Provides all the benefits of membership, except the right to hold national office.

Student: Undergraduates and full-time graduate students. Provides all the benefits of membership, except the right to hold national office. Minimum of 10 credit hours a semester.

Retired: Retired educator who has been an Active NAEA/MAEA member for a minimum of five years. Includes all the privileges of membership.

Associate: School personnel not actively engaged in teaching art and other individuals with general interest in education. Provides the basic publication and discount benefits of membership. Members in this category will not receive membership bonuses and do not have the right to hold national office.

Institutional: Institutions or departments involved with art education. Provides the basic publication and discount benefits of membership, as well as a subscription to the quarterly Studies in Art Education, eligibility for Art Honor Society sponsorship and ONE registration to NAEA/MAEA.