



ArTeacher

Fall 2015

Issue No. 72



Fall 2015 • Issue No. 72 • Quarterly Publication
• Free to MAEA Members •

The Michigan Art Education Association's mission is to promote quality visual arts education through leadership, service, and professional development.

Contents

President's Message 3
Expanding Opportunities..... 4
Making Connections 5
Western Region Gathering..... 6
Cultural Responsiveness 7
Retired News..... 8
Let's Frame The Future..... 9
Keynote Speakers.....10
How to Navigate the Conference11
Failure:LAB..... 12
The Storytellers.....12
MAEA Spotlight Speakers..... 15
Registration and Hotel Information 18
Members' Art Show Information 24
Artisan's Gallery Form..... 25
Offsite Tours 26
Gallery Hops! 27
Pre-Registration Forms 28
Conference Information and Policy..... 31



President

Lani Warner-Yuen

Past President

Amy Marsh

President-Elect

Ren Hullender

Vice President

Adrienne DeMilner

Executive Secretary

Jane Inhulsen

Executive Council

Tanya Lockwood, Treasurer

Sharon Stratton, Secretary

Christopher Bruce, Membership

Cyndi Koppelman, NAEA Delegate

Contact

www.miarted.org

inhul4@comcast.net

MAEA *ArTeacher* is published three times per year: January, May, September, by the Michigan Art Education Association.

Publications for Spring/Summer and Fall are in newsletter format published as full editions and are posted on the website. The Winter publication is in macro-newsletter format with the full edition posted on our website. Annual Membership includes membership and publications for both the National Art Education Association and the Michigan Art Education Association: \$95 [Active Membership], \$95 [Associate], \$65 [Retired], \$80 [first-year Professional], \$45 [student], \$220 [Institutional].

Post Master send address changes to:

Jane Inhulsen
8149 Grand Valley Drive
Grand Blanc, MI 48439

Deadlines for submitting material to the MAEA *ArTeacher*:

April 1 – Spring/Summer

July 1 – Fall

November 1 – Winter

To submit please email articles to: *inhul4@comcast.net*.

Guidelines for articles posted on Publications tab at *www.miarted.org*.

For Articles and Advertisers, contact:

Executive Secretary: *inhul4@comcast.net*

The Michigan Art Education Association is a non-profit professional art education association and does not discriminate on the basis of race, religion, age, sex, color, disability, sexual orientation or national or ethnic origin in following their policies, membership, meetings or any other events or activities.

Graphic Designer: Amy James

Editor: Jane Inhulsen

Framing Your Future

Lani Warner-Yuen

laniwarner@hotmail.com



It is hard to believe that the wonderful summer of rejuvenation and adventures has ended. However, the excitement of beginning a new school year brings great expectations and plans. Plans of how to implement a new teaching strategy; plans to develop art-based intervention strategies for struggling students; plans to connect with your students and families at a deeper level; plans to grow professionally in order to become an art leader in your community. Whatever your plans may be, the MAEA Fall Conference in Grand Rapids could help you with your plans.

Establishing a plan for your own growth is the first step; you are *Framing Your Future*. The MAEA Fall Conference theme is “*Framing the Future: Fostering a sense of community while providing the highest quality professional development and showcasing the strength and talents of our members.*” The conference events will provide opportunities for you to take your plans and establish a path of meeting the goals you have established all while having fun with other art educators.

The MAEA Fall Conferences have been an integral part of my professional growth. Many of the plans that I have developed over the years have become routines in my art rooms, have been deeply integrated into my teaching practice, and have developed into life long friendships all from attending workshops at the conference. Not only was I able to plan, but I was also given the tools and resources to focus on my growth as an art teacher. I can only hope that you have experienced the same path.

I truly hope to see you at the MAEA Fall Conference in Grand Rapids, October 15-18 so you can continue or begin to *Frame YOUR Future*.



You may register online at www.miarted.org/data/. The online MAEA Fall Conference registration site contains only those events requiring TICKETS such as MEALS, TOURS and TICKETED SESSIONS. You may download the full conference schedule on the MAEA home page at www.miarted.org.

The Expanding Opportunities of Art in Education

Ren Hullender

hulleir@cmich.edu



"To succeed today and in the future, America's children will need to be inventive, resourceful and imaginative. The best way to foster that creativity is through arts education."

— Arne Duncan, U.S. Secretary of Education

For 40 years, I have heard art education described as the black sheep of art and the stepchild of education. Neither artists nor educators seemed to understand our vision, passion, and impact on children's lives. As art teachers, we often felt like second-rate citizens: disrespected, isolated, alone; relegated to a no-man's land stocked with few materials and insufficient support. In spite of these perceptions, our students excelled.

We know what the arts have done for us, and we have witnessed the dramatic impact of the arts in the lives of those we teach. We've always known that the arts incorporate and connect content across all the disciplines and synthesize

learning in ways that are personal, relevant, and meaningful. The nature of art is education, and the synergy of art plus education embodies a pedagogical dynamic that is greater than the sum of its parts. Now, the rest of the academic world is figuring this out and coming to us for help.

The need for creative thinking is a growing awareness among parents, politicians, and educators. Business leaders and school superintendents state that innovative thinking is the number one requisite for new employees, and that creativity should be explicitly developed in the public education classroom (The Conference Board, 2007). The ability to innovate with tools and materials is now considered the most important skill for high school graduates (Wagner, 2012; Zhao, 2012). Teachers, seeking to improve student learning in their classroom, are clambering for arts enhanced lessons, arts integrated lessons, and arts infused lessons. Recent research has confirmed that more hands-on activities in Science, Technology, Engineering, and Mathematics (STEM) programs have not been successful in producing more inventive scientists and engineers, and STEM educators are scrambling to introduce open-ended arts-based lessons to foster creativity and design thinking (Sousa & Pilecki, 2013). Now, colleges and universities are being tasked with increasing arts-centered strategies in their teacher preparation programs.

In the interest of school reform, the rest of education is wading into our arena, and they need our expertise and leadership. Rather than diminish or supplant what we do, this enhances and expands our efforts! Art specialists are being recognized as experts, ambassadors, consultants, and mentors, introducing the pedagogical value and impact of the arts to every administrator, faculty member, student, parent, and community member. If the trending wave of arts education has not hit your area, be prepared; it's coming! Begin now! What opportunities do you see for expanding art in your school? What content area teachers do you know who might already be open to trying some of your ideas? How can you support their efforts? What are some other ways you can demonstrate the power of the arts to your school? Your community?

Want to learn more? Need new ideas? Attend the MAEA Fall Conference! Have you been asked to work with a STEM program? Ever tinkered in a makerspace? Need fresh ideas for using technology in the artroom? For creating with recycled materials? For implementing service-learning or developing community-based art projects? I won't give away their plans or steal their thunder, but I will tell you that the committee has organized many incredible art-expanding experiences, and the 2015 conference will be one of the most unique and informative, ever. In this time of rapid change, it is increasingly important that we take every opportunity to gather together, share, and learn from each other! Check it out on our website; see you in October!

Making Connections: Inspiring Stories and the Real World Impact of Art Education

Adrienne DeMilner

adrienne616@gmail.com



Everyone enjoys a good story. It is one of the first things in life that make us imagine and dream about the world around us. Hearing a story is what makes life interesting, giving it purpose and value. A story can inspire a child to envision a future; it can become a focus for a teen to strive for in school; and it can help an adult question and change their path in life.

In art education, we deliver stories of famous artists to our students in the hope of inspiring them to create art. Some of these famous artists had their lives planned from birth and others figured out ways to work art into their lives. The best stories, however, come from people who beat all odds to become the artist they were meant to be.

I recently had the pleasure of hearing a story at an Art Education conference. It began with a young boy living in a rough neighborhood in Los Angeles, California. His escape from the danger of his environment was a talent and passion for drawing and the dream that art would be his career path in life. He grew into a talented young man and met with many barriers to his dream of becoming an artist, mostly because of his social status and the color of his skin. Yet he prevailed. His persistence that art was his purpose in life finally landed him a position as a shoe wear designer for many important manufacturers in the U.S. He designed shoes for Michael Jordan, Nike, Adidas and many others. And when he reached the apex of his career, he decided that he wanted to give back to others like himself who had the dream but were stifled by the path. He now has a high school and a university that provide art education for these students.

I was so inspired by this speaker, that upon returning to my own classroom, I told his story to my students. You could have heard a pin drop in my room, in which 32 fourteen year olds were held spellbound by the story. We looked at the designs made by this artist, and talked about actually using their art talents in real life. The teachable moment was priceless.

I would never have heard this inspirational story if it were not for our organization. We have the opportunity to hear more stories, learn more techniques, and share with our colleagues at these conferences and I urge you to go and experience the array of gifts that are yours for the taking.

Mark Twain once said, “The two most important days of your life are the day you are born and the day you find out why.” I believe there are many purposes to our lives, not just one. The impact of our delivery of art and its inspiration to students has a long life. We have all learned so much along the way that is valuable. Consider sharing your art wisdom and learning from others at this year’s conference in Grand Rapids, *Framing the Future*. This conference will feature new and unique experiences. We will hear stories from Failure:Lab in which talented people share experiences that led to empowerment in their careers. There will also be a unique connection with the Grand Rapids Comic-Con, which will be happening concurrently right next door to ours. Their organizers have partnered with us to offer unique options for our members AND their students.

My great hope is that not only will you attend, but you will invite a friend who is NOT a member to join us and benefit from the vast array of stories, ideas, and real world connection to the arts. You would be opening up a new world of possibilities to your friend and bringing up their level of art education, perhaps creating a new story.

See you in October!

Artfully,
Adrienne DeMilner

Western Region Gathering

Cyndi Koppelman

NAEA Delegate



The Western Region bi-annual gathering was held in Santa Fe, New Mexico in June. Leaders from each of the sixteen states that make up Western Region met for two days to share current trends and issues in our states, activities that focus on advocacy and community, new ideas that each state is working on, and any issue with which each state might need help.

Participants were also asked to provide information to NAEA through a round table format about Governance – developing highly effective boards; Leadership Succession; Designing a Strategic Vision; Membership Growth Strategies (member benefits); and Communication and Awards.

Our time in Santa Fe also included a little fun, with tours of the Museum of International Folk Art and its exhibit The Red that Colored the World, as well as time to explore the Georgia O’Keefe Museum.

The NAEA National Convention will be held in Chicago, March 17-19, 2016. Do not wait to make your reservations at the Hilton Chicago Hotel or the Palmer House Hilton. There are separate links for each hotel on the NAEA website. Transportation to and from the McCormick Place Convention Center will be provided at each hotel. Online registration for the convention opens in the fall of 2015. Early bird deadline ends February 18, 2016.



Cultural Responsiveness

Tammi Browning

tbrownin@bentleyschools.org



From the perspective of a high school art teacher, I find it a challenge to get students to use their analytical skills to tackle more advanced art concepts. Ten years ago, I could present a concept to students and give them a few guidelines, and they would create a product that solved the problem successfully in an analytical way. Today, this does not work. Students need a rubric with step-by-step instructions and an example. Most of the time, the product looks very similar to the example. The ability to use their curiosity and imagination has been knocked out of our students through focusing on memorization. To produce art on canvas or sculpting clay takes contemplation, time and patience. These are qualities that are disappearing in our population of youth. This phenomenon may be due to our evolving world of technological gadgets that provide instant results. Our world of instant gratification has done an injustice to our youth. They get frustrated if the computer takes too long to load. They give up if they think a challenge will take too long... and too much effort. As a teacher, I find

it more and more challenging to get students to finish extended projects that take more time than they expected. For those brave souls who choose to take on the challenge, when they do finish, they gain a sense of pride and accomplishment. For some, they discover their passion and become more open to advanced art challenges.

Tony Wagner (2010) states, "...young people who have discovered their passion are far more likely to have the will and discipline to learn and do the difficult things that school and work often require" (p.206). Wagner quotes Susan Metros, who helps me identify with this in my own experience: "...social studies isn't just the study of war and politics. It is also about food, music, culture" (p.189). Several years ago I noticed that history and social studies teachers in my building face time constraints to covering all of the information needed to pass the standardized test, which hinder them from really delving into the cultural traits of societies presented. As an art teacher, I try to create lessons that complement the other disciplines. This is called Discipline Based Art Education (DBAE). To help my colleagues, I developed a class called "Art In Society". In this class, students were told they would not be required to memorize dates and names, but rather, they were going to understand why fashion trends, music genres, cuisine and celebrations are unique to different people from other parts of the world. My lessons involved units that explored different cultures. Students were asked to find out where on the globe each culture existed. They studied the climate and topology to understand what clothing is necessary and native food that would be available. We then explored eras in time and the events that took place that influenced the way art looked and the music sounded. At the end of each unit, we had a feast. Students were required to bring authentic food from that culture and time period, in potluck fashion. We all ate together while listening to the music of that culture. Throughout the years, I have had numerous students tell me that Art In Society class helped them understand history and social studies more easily. It is because they could relate the concepts learned to real life, and in doing so, they retained the information.

From my experience and observation, students are no longer provided with the opportunities to be creative and relate their learning experiences to the real world. As an art teacher, I have the advantage to still be creative in lessons, because I do not have the worry of getting all of the standards and benchmarks into students' brains in time for the test. I have the advantage of challenging students to apply the information educators give them in a real and authentic way. Communicating with my colleagues and creating cross-curricular connections enables students to experience authentic learning that sparks their curiosity and desire to find out more.

Reference: Wagner, Tony (2010). *The Global Achievement Gap*. New York, N.Y.: Basic Books.

Retired News

Maureen Roslanic



Picasso stated...

"Art brushes away the dust from every day life and frees our soul to soar."

It is great to keep art alive.... Grand Rapids, Michigan, the "All American City" in which Region #9 is hosting the fall 2015 conference at the Amway Grand Plaza downtown. *Framing The Future* is right after Art Prize from October 15-18, 2015.

Many of the retired art teachers have volunteered to present in the Master Medley Workshops. We will have lesson plans and hands-on learning presentations. We will be giving lessons to inspire new ideas and techniques along with sub plans. The proceeds will go from this ticketed event to the student scholarship fund.

Please collect your garage sale items once you have cleaned out your classroom to donate for the student scholarship fund. You can drop them off at the registration area up on arrival to the fall conference in Grand Rapids. We plan to have the garage sale for two days. I have many lessons, deer skulls, posters, and miscellaneous items to start with but *PLEASE* help by donating more. Thank you so much as always for helping to support the student scholarship fund.

Retired art teachers that will be awarded at the conference banquet and honored so far are: Jane Rettke, Nancy Douglas, Carolyn Steenland, and Julia Tomaro. If you have retired and are a current MAEA member, I would love to have your name and information so you may be honored at the banquet and awarded for so many years of dedication as an art teacher. You are all born for greatness while your students have been rewarded by your extraordinary efforts, so MAEA, RAEA and I want to recognize you. You are very important to us. Please let me know before the end of September 2015.



**DRAWING
FIBERS
CERAMICS
SCULPTURE
PAINTING
PRINTMAKING**



VISUAL ARTS PROGRAM

All young artists welcome | Grades 7-12
Two-week summer sessions from June 29 - August 21, 2016
Scholarships and Financial Aid Available

blue lake
fine arts camp

bluelake.org
800.221.3796

50 YEARS 1966-2016

Let's Frame The Future Together



- Christopher Bruce • Tricia Erickson •
• Sharon Stratton •

fram • ing

verb : the formulation of plans, concepts, systems, and important details.

noun : the framework that supports and protects a "picture." The frame enhances but is not itself the subject of attention.
: the act, process, or manner of constructing anything.

We want to welcome you to Grand Rapids this year for the 2015 MAEA Conference. Together we will look at the idea of "Framing The Future."

Grand Rapids, the second largest city in Michigan, is overflowing with culture, diversity, and love for the Arts. It is home to ArtPrize and our conference will be taking place the week after the competition. We are fortunate to have so much support from the community. Grand Rapids Art Museum is supporting our events, offering a venue for our Awards Banquet, Saturday Night Gala, and Members' Show. In addition, GRAM will be providing free admission and tours for our members during the conference. Kendall College of Art and Design is hosting Failure:Lab, an exciting new event. The Urban Institute for Contemporary Art is opening their doors to us for a Thursday night reception along with a Paint and Sip. The Devos Convention Hall is the venue for this year's Comic-Con event, which will be taking place at the same time as our conference. This is allowing us to bring some interesting speakers and opportunities to our members. Grand Rapids is home to Meijer Gardens and Sculpture Park, as well as a Frank Lloyd Wright house, which will be destinations for some offsite tours. We have also planned some interesting gallery tours for members who would like to experience more of Grand Rapids.

We have some great networking opportunities where you can meet with others from your Division or Region, attend one of our many shows, buy some "treasures" at the Annual Garage Sale, or even get in some yoga stretches overlooking the beautiful Grand River.

Whether you join us for one day or all four, you will have many opportunities to learn from and with the many talented artists and teachers presenting workshops. Our keynotes will share varying perspectives and experiences with us. Thursday, Chris Yambar, creator of The Simpsons, pop culture creative force will speak to us at UICA. Friday, Dr. Steve Robbins will challenge us to look at the world in a different way. Saturday, ArtPrize winner and teacher, Adonna Khare, will inspire us with her successes, challenges, and insights. From our own

ranks, we will be featuring several Spotlight Speakers. Dennis Inhulsen, Chief Learning Officer of NAEA, and September Buys will help us to decode the National Arts Standards, and Janine Campbell will inspire us in innovative ways to teach and guide students.

During the conference, you can create your own silk dyed "Shibori" scarf for our fundraiser this year. They are beautiful, so you might want to make two or three.

We hope to see you Thursday night for our Frames, Friends, and Fun Painting Party Reception at the UICA to do the "art teacher version" of a Paint and Sip. A cash bar will complement the evening along with a variety of art making supplies provided by Service Reproduction Company, making this the perfect start to this year's conference.

Friday night's event, Failure:Lab will feature keynote Adonna Khare, MAEA Past President, Cindy Todd, and Michigan State professor, Karl Gude. These successful professionals will share failures they have experienced and allow us to learn from them. Between storytellers, entertainers will share their unique talents with the audience. This is our NEWEST Not-To-Miss event. (Hint: They all are.)

Saturday is the day that starts with our Annual Meeting and ends with our fantastic Tableau Vivant themed Gala. We'll Party Like a Painting! In between, it is jam-packed with Adonna Khare, MAEA Spotlight Speakers, great workshops, and the Awards Banquet, too.

Sunday is time to say goodbye, but not until you fit in a few more workshops and then the planning begins for 2016.

Grand Rapids has so much to offer, and we are excited to share it with all of you. We know that you will leave inspired, educated, and refueled for another year. We would also like to thank all of the volunteers who helped us bring this conference to you.

Keynote Speakers

Thursday, October 15



Chris Yambar

www.yambar.com

Comedian and pop artist from Simpsons

If any single word can be used to describe the career of Chris Yambar, it would be WOW!

Since his personal creation in 1961, no surface has been safe from his addiction to the creative process. Painting, writing, publishing, recording, lecturing, and other words ending in “ing” are just a few of the things that occupy his daily life as an artist.

After spending a decade toiling in the fields of advertising and marketing and acting as publishing editor of an underground arts newspaper, Chris turned his energy to painting.

As a Pop Artist, he has created over 2600 images, which have found their way into numerous private, corporate, and celebrity collections, galleries, and museums around the globe. His paintings can be found

in such diverse places as the Ronald Reagan Library, The P.T. Barnum Museum, The Butler Institute of American Art, the Hummel Museum, and the President Bill Clinton Time Capsule in the Smithsonian to name a few.

In addition to his efforts as a painter, Chris has enjoyed a rewarding career as a writer for some of the world’s most beloved comic characters, including Bart Simpson, Radioactive Man, Spongebob Squarepants Popeye, I Dream of Jeannie, ElfQuest and Mister Magoo. His own award-winning stable of characters, which includes Mr. Beat, El Mucho Grande–Wrestler for Hire, The Fire-Breathing Pope, Meow Wow, Twerp & Blue Baboon, Spells and Suckulina–Vampire Temp, has gained him a reputation as one of the most original creators in comics, as well as one of the most diverse.

In 2003, his graphic novel, *Suicide Blonde* won him the award for Best Science Fiction Writer in Comics by *Cinescape Magazine*. That same year, his graphic novel adaptation of Thomas Edison’s lost 1910 horror film, *Edison’s Frankenstein*, won him the acclaim of horror historians and critics alike. In 2014, Chris entered the children’s book market with his own series, *Midnight Nursery*.

When he isn’t in front of a canvas or a computer, Chris can be found in “Airport U.S.A.,” traveling throughout the country lecturing on the topics of guerrilla marketing, pop culture, and practical theology. Without a doubt, Chris Yambar is one of the most delightfully dangerous artists on the planet.

Friday, October 16

Dr. Steve L. Robbins

www.slrobbins.com



A powerful storyteller with a powerful story to tell, Dr. Steve L. Robbins has an uncanny ability to inspire people even in the midst of disrupting and challenging the way they think about the world. He uses neuroscience and the science of human behavior to challenge individuals and organizations to be more open-minded, mindful and intentional about inclusion and valuing people for their unique gifts, abilities and experiences.

Dr. Robbins earned an undergraduate degree in Communication from Calvin College, and his masters and doctorate in Communication Science from Michigan State University. His background in communication, socio-psychology and cognitive neuroscience drive his work with individuals and organizations – the core of the work is about understanding human behavior and leveraging human differences in an ever-changing, dynamic world.

Keynote Speakers

Saturday, October 17

Adonna Khare

www.adonnak.com



Adonna Khare is an American Artist mainly focused on carbon pencil on paper drawings. She received her Masters of Fine Art from California State University Long Beach. Her work has been collected by prestigious public and private collections throughout the world. In 2012, she won the world's largest art competition, *ArtPrize*, competing against over 1500 artists from all around the world.

She has been featured in the *Los Angeles Times*, NPR, *The Huffington Post*, *Daily Mail*, *Juxtapoz Magazine*, *Mashable*, *My Modern Metropolis*, Saatchi Gallery as well as thousands of blogs, Facebook, Pinterest and Instagram pages.

She has had group and solo shows throughout the country - Long Beach Art Museum, City of Carlsbad Art Gallery, Nassau County Art Museum, Yellowstone Art Museum, Grand Rapids Art Museum and Crystal Bridges. She will also be featured as one of our three storytellers who discuss their personal failures during our FAILURE:LAB event on Friday evening - this is a must see!

How to Navigate the Conference Session Information Online

Session Number system:

- 100's = Thursday sessions
- 200's = Friday sessions
- 300's = Saturday sessions
- 400's = Sunday sessions

Session Numbers may be prefaced with 'TC', which means Ticketed Session. Example: TC #200. These sessions are either hands-on or have a fee and therefore are limited in the number of participants with a "ticket." Medleys and tours will have actual tickets in the registration envelope you receive when you check in at the conference. Hands-on ticketed sessions provide a class list to the presenter with NO individual ticket in the envelope. There will be a "Big Ticket" with these sessions listed for you to check in at the session.

Session Numbers maybe prefaced with:

- 'K' which means a Keynote Speaker. Example: #K-1
- 'SS' which means a Spotlight Speaker. Example: #SS-1
- 'T' which means a Tour. Example: #T-1
- 'M' which means a Meal. Example: #M-1
- 'R' which means a Reception. Example: #R-1



All Fall ArTeacher/onsite program Book Conference session Codes:

- Logo for a Bus or Car = Offsite
- Logo for Foot = Offsite Walking Distance
- AA = All Audiences
- HS = High School
- MS = Middle School
- EL = Elementary
- HO = Hands-On
- R = Retired
- T = Technology
- ST = Student Teacher
- MU = Museum
- HE = Higher Education
- CD = Cultural Diversity
- O = Other
- AS = Administrator/ Supervisor
- CI = Classroom Instruction
- EE = Exceptional Education

The conference session format you will find online gives you all the information as follows:

- TIME: [12:00-3:00 pm]
- SESSION # [example: TC #100 for Ticketed, #T-1 for Tours, #M-1 for Meals, #R-1 for Receptions, etc.]
- SESSION TITLE
- LIMIT OF PARTICIPANTS: [may be limited due to hands-on, or room size]
- TICKETED: [\$\$ cost for session]
- SESSION DESCRIPTION
- REPEATS: [or not repeated]
- AUDIENCE: [note session key categories]
- PRESENTER: [name, position, school, business]



Federal Building
Friday, October 16, 2015
Maximum Number: 150

7:00-10:00 p.m.
Cost: \$20

What is FAILURE:LAB?

FAILURE:LAB is a raw and intimate evening showcasing personal stories of failure.

With a refreshing environment of openness, it helps pave the way for change by crushing the isolation and stigma around failure. Failure then takes its rightful place as the crucial first step to the next big thing. Embrace it, learn from it, build on it.

This one of a kind experience will let three successful people tell their personal stories of failure in only nine minutes without the happy ending. Then you, as the audience member, are encouraged to respond to

these stories immediately by writing or tweeting what you take away from them. In between each storyteller, there will be a performance by a variety of entertainers and the evening will end with a reception sponsored by Uncle John's Hard Cider, where people are welcome to stay and meet the storytellers and entertainers as well as enjoy complimentary beverages.

*For more info on FAILURE:LAB visit:
www.failure-lab.com*

The Storytellers

Dr. Cindy Todd



Dr. Cindy Todd is the Art Education Program Chair at Kendall College of Art & Design of FSU in Grand Rapids, MI and the Vice President-Elect of the National Art Education Association Western Region. Before becoming a professor, Cindy taught K-12 art in the Michigan public schools for over 14 years, teaching at all levels, elementary, middle and high school. She is Michigan's 2015 Teacher of the Year, was the recipient of the 2013 NAEA's Student Chapter Sponsor Award of Excellence, was awarded Rochester Public School's Secondary Teacher of the Year award, and is a former MAEA President.

She has presented keynote addresses at many conferences including Minnesota, Arkansas, Missouri, and Ohio, presented at many Michigan and NAEA Conventions, and has provided professional development for teachers across the state of Michigan. She is currently a key consultant in developing the Grand Rapids Museum School, whose school wide curriculum is based on design thinking and place-based learning. She also co-authored *Language Artists*, a program implemented district wide in the Grand Rapids Public Schools, which has won three National Endowment of the Arts Awards.

Adonna Khare



The amazing and talented Adonna Khare is back again, but this time she will be discussing her own personal story of failure in this raw and intimate FAILURE:LAB event. In 2012 she won the world's largest art competition, ArtPrize, competing against over 1500 artists from all around the world, so to many artists she is the epitome of success. Come and hear her story like she has never told it before.

The Storytellers

Karl Gude



Karl Gude teaches information graphics (infographics) and creative thinking at Michigan State University's School of Journalism. Prior to coming to academia in 2006, Karl worked as the Director of Information Graphics for *Newsweek* magazine and for *The Associated Press*.

Karl visually told stories on every topic imaginable during his 25 years working in the news industry, from presidential elections to sporting events and from technical, medical and scientific discoveries to terrorist attacks. Karl led *Newsweek's* graphics team during the attack on the World Trade Center and many other breaking news events.

Since coming to academia, Karl has pointed his visual storytelling lens beyond journalism. He is working on a National Science Foundation grant to help people understand evolutionary biology and was invited by scientists at CERN, Switzerland to work with his students to explain the science of the Large Hadron Collider. Karl has consulted numerous times for the CIA as well as health and PR professionals to convey their messages in new ways. He has given three TEDx talks and has spoken twice at South by Southwest (SXSW) in Austin on the power of visual storytelling.

SPARK SOMEONE.

KCAD
Kendall College of Art and Design
of Ferris State University
800.676.2787
kcad.edu

The greatest thing you can do with your own talent is to nurture someone else's.

Discover the power of a KCAD education today at kcad.edu

2015 CONFERENCE SCECHS

State Continuing Education Clock Hours (SCECHs) may be requested at time of pre-registration, either online or snail mail or onsite, with a \$20 certificate fee charge. Participants who desire SCECHs are responsible for following state guidelines by having presenters sign you in and out of their sessions. Please look for the SCECH table near registration and be prepared to pay the fee and fill out a form.

Please note: Upon conclusion of the workshops we will upload participant information to a Secure Central Registry (SCR). This will trigger an email from the Michigan Department of Education instructing you to complete an online profile and evaluation within 30 days. Failure to follow through within 30 days will mean loss of SCECHs. SCECHs and graduate credits may not be applied to the same workshop.

MAEA Spotlight Speakers

Dennis Inhulsen



Dennis is Chief Learning Officer (CLO) for the National Art Education Association (NAEA). Dennis was an elementary principal and art teacher for thirty-five years. He taught art for all ages, pre-K through university. He is a Past President, Vice President, President and convention chair for NAEA. Dennis was president of the Michigan Art Education Association (MAEA) in addition to holding many volunteer positions nationally and locally.

Dennis served as visual arts writing chair with the National Coalition of Core Art Standards (NCCAS) and is a member of the NCCAS Leadership Team.

September Buys



September is passionate about experimenting with, learning from, and sharing ideas with others. She has taught at all levels (Pre-K through University) and currently teaches at the middle level where she has spent the bulk of her career. After earning her B.A. (WMU, '99) and M.A. (MICA, '04) in Art Education, September helped write and edit the Michigan grade level content expectations for visual art in 2009 and served on the revision/editing team for the recently released NAEA publication, "Purposes, Principles, and Standards for School Arts Programs."

In addition to serving on the national core visual arts standards writing team, Buys is currently developing an action research based curriculum about Teaching for Creativity. September is currently serving NAEA in the role of National Middle Level Director. Among her awards, she is a past MAEA Art Educator of the Year and past National Middle Level Art Educator of the Year.

Janine Campbell



Janine is a K-12 certified Visual Arts teacher at Byron Center Public Schools. As a graduate from The University of Michigan-Flint and Western Michigan University, she earned her Masters of Art in Art Education and has been practicing her craft in the middle school art room since 2004.

Her students' works have been featured in SchoolArts Magazine and the MACUL Journal. She has been a keynote presenter for the Art Education Association of Indiana Conference, the Ohio Art Education Association Conference, as well as presenter for the National Art Education Association Conference, Michigan Art Education Association Conference and Summer PD, the Michigan Association of Computer Users in Learning Conference, as well as local educational institutions.

Her classroom has won local and national recognition in the Scholastic Art and Writing Awards, awarded various grants, as well as receiving a second place award for the use of educational technology in the 2011 PBS Innovation Awards and first place for the 2013 STEAMed Innovator Awards. She was also named a 2014 PBS Learning Media Digital Innovator, 2015 Michigan Art Education Association Middle Level Educator of the Year, and 2015 National Art Education Association Western Region Middle Level Educator of the Year. You can find out more information about her classroom on her blog at www.bcwmsart.weebly.com.

MAEA Spotlight Speakers

Ren Hullender



Ren is assistant professor of Visual Arts Education at Central Michigan University and is MAEA President-Elect. He is in his 40th year as an art educator and has taught at the secondary and higher education levels. His investigation into the future of education in the United States and China has led him in several research directions.

In 2013, as a result of his learning theory research in art as cognition, he was invited to China to lecture, demonstrate, and conduct workshops on Innovating Pedagogical Practice at Chinese education universities. He has subsequently designed an Art & Science Magnet School in Shenyang, China, brought Chinese art students to the U.S., and created opportunities for American art educators to teach in China. A recent recipient of the Michigan Campus Compact Community Service-Learning Award for 2014-2015, Ren conducts multiple service-learning projects in Michigan communities each year and just completed a two-year international project in Okaya and Hiroshima, Japan.

He has presented and published on the transformative nature of service-learning at multiple regional, national, and international conferences, most recently: *A Reflection Model for Transformative Learning* at the National Collegiate Honors Council, and *Service-Learning: A Visual Arts Pedagogy for Sustainable Futures* at the American Educational Research Association Annual Meeting. Ren is currently collaborating on a Center for Excellence in S.T.E.A.M. Education and a Makerspace at CMU, providing grants, research, professional development, and support to classroom teachers. He and his wife, Tammy, have six children and three grandchildren.

Linda Tyson



Tyson has been a part of the Oakland community for the past ten years, teaching a variety of courses including Educating Children in Art, Visual Culture: Theories in Art Education, International Baccalaureate: Philosophy and Practices, Secondary Art Education Methods, and the Art of Children's Books.

Tyson's numerous professional engagements have placed her as Treasurer and Executive Board member of the Michigan Art Education Association (MAEA), a member of a research committee for the National Art Education Association, an external examiner for the International Baccalaureate Organization, and co-director of the Oakland University Summer Art Intensive for high school students.

At the same time, she also acts as the co-host of a podcast series called "Podcasts for Leaderful Schools," with Dr. Robert Maxfield. Available through iTunes, the weekly series engages a wide range of guests in critical conversations centered on school reform and equity. For her dedication and outstanding work at Oakland University as well as in the greater community, Linda Tyson earned the 2012 Michigan Higher Education Art Educator Award from MAEA.

MAEA Spotlight Speakers

Lani Warner-Yuen



Lani is the current MAEA President and an Elementary Art Educator at Walled Lake Schools in the suburbs of Detroit. For the last thirteen years, Lani has taught kindergarten through twelfth graders, as well as her district's art camp during the summers. She earned her undergraduate degree from Northern Michigan University and a Masters in Curriculum, Assessment, and Instruction from Marygrove College in Detroit.

Lani has served the MAEA as Elementary Division Chair, Awards Co-chair, and now as President. Servant leadership and leading with kindness are the philosophies that drive Lani to continually serve her fellow art educators and to professionally grow.

Dr. Susannah Van Horn



Dr. Susannah L. Van Horn is an assistant professor of Visual Art Education at Michigan State University and is a joint appointment between the Department of Teacher Education and the Department of Art, Art History and Design. Her research areas include early childhood visual literacy skills, regionalist artists along with community-based oral history documentation, and the integration of contemporary artists into the Visual Arts curriculum in order to address challenging social justice topics and expand students' awareness in the classroom.

Spirit Trees

Lesson Plan
for Grades 3-12

Legends are plentiful about connections between humans and trees — what will your special tree reveal about you?

This "Spirit Tree" is created from lengths of coiling core, glued together and wrapped with wire to impart flexibility to the branches.

DickBlick.com/lesson-plans/spirit-trees

BLICK®

800•447•8192 DickBlick.com



Request
a FREE
catalog!

Visit
DickBlick.com/requests/bigbook
to request a FREE catalog!

Important: Registration Instructions

If you plan to register online at: www.miarted.org/data/, ONLY TICKETED SESSIONS [hands-on, medleys, meals] OR TOURS are listed on the registration site.

Please read the following helpful information:

1. Membership ID number: if your membership has or will expire before October 18, you must renew it. You can renew at: www.miarted.org/MAEA_Membership.asp, or go to the NAEA site at www.arteducators.org/community/membership.
2. If you are a new/recent member and are not registered with MAEA systems yet, the MAEA online registration system will give you a temporary number so you can still register. MAEA and NAEA require your membership to attend the conferences. We will send you reminders to fulfill this responsibility if we do not have confirmation from NAEA by our next membership reports.
3. Many of our members find that they must re-enter the online registration site to adjust session selections. To do so, you will need to use the same Membership ID and Last Name as you initially set up. If you do not, you will be listed multiple times, and will be charged fees each time you re-enter. These can be cleared up, but adds to the challenge of accounting for the number of members attending. Should you have problems, email Margaret at MAEAregistrar@gmail.com or Jane at: inhul4@comcast.net.
4. MAEA conference now creates class lists for the presenters for the ticketed sessions; therefore you will not be able to register for certain sessions for anyone else, as your name will be on the list multiple times. You will be allowed to purchase only one ticket for each ticketed session.
5. Guests and spouses must be registered on the special Guest Registration site or Special Registration form. This link is found on the main registration login page. You will not be able to select a meal, for example, the Awards Banquet, for more than one ticket. You must register that additional ticket, or tickets in the guest registration.
6. All receipts from both snail mail and online registration are emailed. Watch for emails from: confrenceregistrar@miarted.org. If your payment is not made when registering online, you will receive an email reminder notice. If this is not paid, prior to the conference, you will not be guaranteed any of the ticketed sessions you have requested. You will need to register at onsite prices for the sessions that are still available.
7. No conference badges will be included in envelopes at the registration desk until all payments are completed. If payment is not rendered prior to the close of pre-registration, your registration will be cancelled.
8. Your onsite registration envelope will include your receipt and tickets for any meals, tours, or medleys that you have selected. "Ticketed" hands-on sessions provide the presenter with a class list; you do not receive a separate ticket for each session. You will receive one "Big Ticket" listing ticketed events.

Hotel Registration Information

Discounted accommodations for MAEA attendees have been arranged with the Amway Grand Plaza Hotel.

Conference Rate:
\$129.00 a night + applicable taxes

To register online please visit:
www.tinyurl.com/maea2015

To register via phone please call:

Reservations Toll Free:
(800) 253-3590

Reservations Local Phone:
(616) 776-6450

Reduced cost reservation cut-off date:
September 14, 2015

Please register early as the reduced hotel rate is not guaranteed after September 14.

Registration Location and Schedule

Registration may be completed onsite at the Amway Grand Plaza Hotel Level 2 Concourse upon arrival. However onsite registration fees are higher in all member categories and will also mean standing in significantly longer lines and less chance of obtaining desired tickets.

Thursday----- 3:00 p.m. - 7:30 p.m.

Friday----- 7:30 a.m. - 7:30 p.m.

Saturday ---- 8:30 a.m. - 2:00 p.m.

~~~~~ Wear Your Badges ~~~~~

Conference Attendees will receive badges at registration, which must be worn at all conference activities and events.

Grand Rapids Facts

Arts

- La Grande Vitesse is the first public artwork funded in part by the NEA.
- Frederik Meijer Gardens & Sculpture Park is one of the world's 100 most-visited art museums.
- ArtPrize is the world's richest, most radically open art competition.
- The Grand Rapids Art Museum was named one of the six best buildings of 2007 (*Newsweek Magazine*).

Eats

- Stella's Lounge serves America's Best Burger (*GQ Magazine*, 2012).
- Then again, *USA Today* says the Cottage Burger at Cottage Bar is Michigan's best.
- MadCap Coffee brews up America's Best Tea (*GQ Magazine*, 2012).
- Founders Brewing Company is the World's Second Best Brewery (*ratebeer.com*, 2012).
- HopCat is the Third Best Beer Bar on the Planet (*BeerAdvocate*, 2012).

Play

- The Fifth Third Riverbank Run is America's largest 25K road race, with more than 21,000 participants from around the globe.
- You're never more than a few miles from a body of water in Grand Rapids – one reason we're America's Sixth Best Fishing City (*Field & Stream Magazine*, 2006).



Amway Grand Plaza Driving Directions

Street Address:

187 Monroe Avenue NW
Grand Rapids, Michigan 49503

GPS Direction Input:

The hotel's motor lobby is located on:
225 Pearl Street NW
Grand Rapids, Michigan 49503

The Amway Grand Plaza Hotel is conveniently located in the heart of the downtown Grand Rapids business and entertainment district. At the crossroads of both US-131 and I-196, the hotel is easily accessible and just a brief 18-minute drive from Gerald R. Ford International Airport.

Go to: amwaygrand.com/contact/directions to access a map of the Amway Grand Plaza's location. If you enter your address, you'll get driving directions that will ensure your arrival to the hotel is hassle-free.

Hotel Layout Maps

Go to: amwaygrand.com/uploads/meetings-events/AGP_FloorPlans.pdf

Gala: Tableau Vivant

Party Like a Painting

Location: **Grand Rapids Art Museum**
Date: **Saturday, October 17**
Time: **8:00 p.m. to midnight**

Close out the conference with a party like no other. Dress as your favorite artist or work of art and dance the night away to the cool tunes of Vinylicious. Cash bar available.

Awards Banquet

Location: **Grand Rapids Art Museum**
Date: **Saturday, October 17**
Time: **6:00 p.m. to 8:00 p.m.**

Celebrate the achievements of fellow MAEA members while surrounded by world-class works of art at the Grand Rapids Art Museum.

“This world is but a canvas to our imagination.”

– Henry David Thoreau

“Art is the most intense mode of individualism that the world has known.”

– Oscar Wilde

“The purpose of art is washing the dust of daily life off our souls.”

– Pablo Picasso

**Engage your creativity.
Empower your students.
Transform your career.**

W Online
Education
WESTERN MICHIGAN UNIVERSITY

Earn your master's in Art Education online while you teach.

Join like-minded educators who love teaching art. Empower yourself with advanced skills in research and practice. Take control of the important decisions that affect you, your students, and your career.

Gwen Frostic School of Art
wmich.edu/online/arteducation



Thursday Night Event

Frames, Friends, and Fun! Opening Night Reception at UICA



Urban Institute for Contemporary Art
Thursday, October 15

7:00 p.m. - 9:30 p.m.

Cost: \$4

Join UICA's staff of educators for a memorable night of experimentation and fun! After you listen to our keynote speaker, Chris Yambar, talk from 6:00 - 7:00 p.m., come browse the UICA galleries and catch up with other members during this casual and fun-filled studio event.

Teachers will see contemporary works of art in the gallery, engage in conversation with working artists, and take part in hands-on material explorations with the variety of art supplies provided by Service Reproduction Company. Also, get a sneak peak of the new programs specially designed with K-12 Educators in mind in order to build curriculum connections for classrooms of all ages. Cash bar available.

Fundraiser!

Empty Necks: Scarf Making

Drop in to the MakerSpace at your leisure to create your very own, one of a kind, hand dyed silk scarf, using the ancient Japanese method of Shibori. All proceeds will be donated to Kids Food Basket, a local charity that provides sack meals to underprivileged students. These would make lovely gifts.

Costs:

Standard scarf: \$10

Infinity Scarf: \$15

Location:

Vandenberg B

Friday: 2:00 p.m. - 5:00 p.m.

Saturday: 11:00 a.m. - 6:00 p.m.

Holy Art Batman!

Grand Rapids Comic-Con
is coming to Devos Place
October 16th - 18th.



In celebration of our two art-focused groups coming together, Comic-Con is offering exclusive discount tickets for MAEA members to attend.



One Day Pass: \$10

Weekend Pass: \$20

Discount tickets are available only to MAEA members attending the Fall Conference and who reserve the tickets during Early Registration.

• Vendors •

We are excited to announce that our vendor area will be new and improved this year. The Amway Grand Plaza Hotel has a wonderful mezzanine that will allow us to keep our vendors in a centrally located area. Attendees will have the opportunity to visit the vendors and learn about the latest, greatest art supplies, colleges, and other resources as you travel to and from meals and between workshops. Each day you visit, the vendors will give you another chance to enter the contest for give-a-ways.

Winners of these gifts from vendors will be announced at the vendor area between 4:00 - 5:00 pm on Saturday.

Annual Garage Sale

Back by popular demand, the Annual Garage Sale is once again being run by several retired art teachers, led by Maureen Roslanic, Retired Division Chair.

This sale will take place Friday from 2:00 - 6:00 p.m. and Saturday 11:00 a.m. - 3:00 p.m. in the Vandenberg A Room. This is a great place to find treasures for your Art Room. The proceeds of the sale go to the Student Scholarship Fund. The best items go fast, so get there early!

If you have resources that you have purged from your room, we would welcome the donation. Posters, still life objects, books, maps, sheet music, skulls, videos, are just a few of the items that people can use. Boxes or bags of these items can be dropped off at the Vandenberg A Room Friday morning 10:00 a.m. - noon. Please contact Maureen at (616) 560-5062 or by email at mroslanic@yahoo.com if you need to make special arrangements or have any questions.

New Retirees

If you have just retired and are planning on going to the conference, please let Maureen Roslanic know. We want to honor you and your service to art education at the Awards Banquet on Saturday night at GRAM. You will be our guest with a complimentary meal. Maureen can be reached at (616) 560-5062 or by email at mroslanic@yahoo.com.

Please consider donating your personal art teaching materials to the Annual Garage Sale at the conference.

Thank you!

MakerSpace

Location: Vandenberg B
Friday: 2:00 p.m. - 5:00 p.m.
Saturday: 11:00 a.m. - 6:00 p.m.

A makerspace or hackerspace (also referred to as a hacklab, fablab or creative space) is a location where people with common interests, often in computers, technology, science, or digital or electronic art (but also in many other realms) can meet, socialize and/or collaborate. Hackerspaces can be viewed as open community labs incorporating elements of machine shops, workshops and/or studios where hackers can come together to share resources and knowledge to build and make things.

Please feel free to use this space to continue hands on projects you were working on or continue conversations you were having when your sessions ended. Have fun, relax, and play. We'll have an assortment of supplies and tools to use while you are there.

Student Exhibits

Student exhibits will be around the perimeter of the Ambassador Ballroom

**Friday 8:00 a.m. - 5:00 p.m. and
Saturday 8:00 a.m. - 2:30 p.m.**

Shows featured include the Governors' Traveling Show (high school) and the Elementary and Middle School Top 30 State Exhibit. Kids 'n' Clay + 3D will run as a PowerPoint show during meals.



Photographers Needed

Please help us by sharing the photos you take at the 2015 MAEA Conference this fall in Grand Rapids. We appreciate your helping to document the amazing experiences that you have at the conference. This year we have two ways to share them.

Directions:

1. Take pictures at workshops, meals, events, or even while you are out enjoying what Grand Rapids has to offer.
2. Share one of these ways:
 - a. Log in to our group Shutterfly account (you do not need to create one of your own). Email: ealfoster@gmail.com, Password: *maeaconf*. Then upload your pictures to the *MAEA15* folder, **OR**
 - b. Email your photos to Betsy Welfare at ealfoster@yahoo.com.
3. Enjoy the photos uploaded by other conference attendees.

Thanks for your help!

The Silent Auction that FRAMES the Future

DEADLINE IS SEPTEMBER 20, 2015

Regional Liaisons and other members will be re-purposing, re-working, recycling, and refilling frames with original artwork for our silent auction. Money raised by the auction of this Artwork will be donated to the Student Scholarship Fund (investing in our FUTURE). These items will be on display in the Vendor Area on Saturday from 10:00 a.m. - 3:00 p.m. where attendees may place bids on the artwork. The highest bidder will be announced at the Vendor Give-Away at 4:00 p.m. and the winners may pick up their artwork by 5:30 p.m.

If you have a piece of artwork to donate, please contact your Region Liaison or Carolyn Steenland by email steenlandc@yahoo.com or call her at (231) 652-3814. Donated artwork can be dropped off at the conference registration area. The goal this year is to raise \$1500. Your participation in literally *FRAMING THE FUTURE* is appreciated.

KIDS 'N' CLAY Now Includes All 3D

This year we are expanding this show to include your students' 3D work in this video presentation. Please send a jpeg of student work as early as possible to Darcy Schreiber at kidsnclay2015@gmail.com.

Guidelines:

- Teachers may submit up to five pieces per level. Only one per student.
- Please do not send more than two images for each piece.
- All pieces should be photographed with a white background.
- Include *Title, Student Name, Grade, School, and Teacher Name* with the images in the same email as the jpeg photos.



MAEA 2015 Members' Art Show

Purpose:

This non-juried art show is a celebration of art educators who are currently producing artwork and would like share their talents with their peers. This will be a professional display of artwork in the Education Center of the Grand Rapids Art Museum.

Eligibility:

- Any member of MAEA can submit up to two pieces, two-dimensional and three-dimensional.
- All two-dimensional work must be matted and/or framed and no larger than 30" x 40". Work must be ready for hanging.
- All three-dimensional work should be displayable on a pedestal and weigh no more than 30 lbs. Display cases are not available for jewelry.
- Size and weight restrictions can be waived upon prior approval depending upon availability of space.

Exhibit Site and Time:

Artwork will be displayed Saturday, October 17 in the Education Center of the Grand Rapids Art Museum during business hours, 10:00 am – 5:00 p.m.

Delivery of Artwork:

Artwork can be delivered to the Education Center of the GRAM (entrance on Lyon Street) on Thursday (noon - 5 p.m.), Friday (10 a.m. - 5 p.m.) or to the Conference Registration Area during registration hours Thursday and Friday until 6 p.m.

We recommend that fragile and large pieces be delivered directly to the GRAM.

Pickup of Artwork:

Artists should pick up artwork on Saturday (4:30 p.m. - 5:30 p.m.) or Sunday (noon – 1:30 p.m.).

It is the artist's responsibility to pick up artwork or arrange for someone else to pick it up. All work must be signed in and out at Drop-Off and Pick-Up.

To Enter:

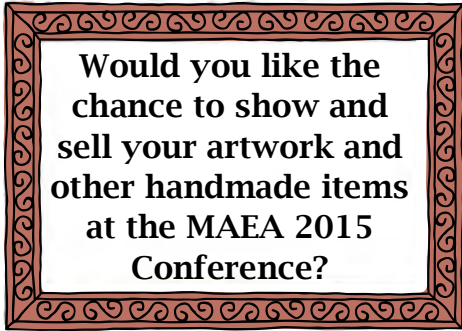
Send your name, title, and media of the one or two pieces you would like to display to Suzanne Butler Lich, suzannebutlerlich@gmail.com. All entries must be sent no later than October 12.

Liability:

It is understood and agreed by all entrants that artwork submitted is at the entrant's own risk. All due care will be exercised in handling artwork by MAEA and GRAM personnel. No exhibit personnel will be responsible for loss or damage. Artists are advised to carry their own insurance. Submission of work constitutes an agreement by entrant to abide by the rules of the exhibit.

Contact Suzanne (suzannebutlerlich@gmail.com) with questions or concerns.





MAEA ARTISANS' GALLERY

Friday, October 16, 2015

6:00 pm - 9:00 pm

Vandenberg Room



We recognize that a large number of our members are working visual artists, as well as educators. We also know that our members appreciate and are inspired by the work of their colleagues. MAEA is proud to host the Artisans' Gallery at the 2015 Conference in Grand Rapids. Members will have a space to showcase and sell their works of art and handmade items. This event will be publicized on the MAEA web page and Facebook page as well as during the conference.

Any MAEA member and invited artists may showcase and sell their work. In order to sell your work at the Artisans' Gallery, you must register to participate and must be registered for the conference. Registration as an exhibitor is \$15 per table. Set up will be 5:00 - 6:00 pm and teardown will be at from 9:00 - 9:30 pm. Email any questions to sara.goodrich@kentcityschools.org. You will receive an email confirmation of your registration.

MAEA ARTISANS' GALLERY - Exhibitor Form

Name _____ Email _____

Address _____ City _____

State _____ Zip _____ Phone _____

Description of item(s) (25 words or less)

No. of tables desired _____ x \$15 each = TOTAL: _____ (Please make check payable to MAEA Artisans' Gallery)

Payment: _____ Check Enclosed _____ Money Order Enclosed

Mail this form and payment to: Sara Goodrich, 1831 McLaughlin Avenue, Muskegon, MI 49442

I have read and agree to the guidelines listed below.

Signature _____ **Date** _____

By registering for a space at the Artisans' Gallery, seller agrees to the following guidelines:

- Seller is a 2015 MAEA Conference registrant or invited guest artist.
- Items for sale are limited to handmade, non-commercial products and are not services (e.g. massage, face painting). MAEA reserves the right to reject any reservation for any reason. Rejected reservations will be returned.
- Reservation includes one draped table, with chair, located in the Artisans' Gallery; no other services or items are included. Work for sale cannot exceed the reserved table space.
- All reservation sales are final, no refunds. Payment must be made by check or money order and reservations mailed separately from conference registration.
- MAEA determines table locations by reservation order. *Reservation No. 1 equals Table No. 1.*
- Seller is responsible for shipping/bringing items to conference site and for their table set up and tear down. Seller is also responsible for bringing any cash needed to make change for cash sales.
- Seller accepts responsibility for any sales and transactions, as well as any local, state, and federal taxes or fees.
- Seller refrains from any other sales outside of the Artisans' Gallery during MAEA Conference hours and in its locations.
- MAEA shall not be held liable for personal injury, death, property damage or accident arising out of this event.

Offsite Tour Descriptions

Frederik Meijer Gardens and Sculpture Park Tour and Tram



Friday, October 16 and
Saturday, October 17 2:00 p.m. - 4:50 p.m.
Maximum Number: 56 Cost: \$25

Experience masterpieces of art and nature that will delight your senses at one of the nation's premier horticultural display gardens and sculpture parks in Grand Rapids, Michigan!

One of the nation's most significant sculpture and botanic experiences, Meijer Gardens includes Michigan's largest tropical conservatory; five indoor theme gardens; outdoor gardens, nature trails and boardwalk; sculpture galleries and permanent sculpture collection; library; café; gift shop; classrooms; and meeting rooms. Both indoors and outdoors, the 158-acre main campus is barrier free and handicap accessible. Our 2009 building upgrade was awarded LEED (Leadership in Energy and Environmental Design) Silver status by the USGBC (U.S Green Building Council). Since it opened, Meijer Gardens has attracted more than nine million visitors.

This trip will include general admittance, a guided tour, as well as a tram ride through the park.

For more info visit: www.meijergardens.org

Frank Lloyd Wright's Meyer May House Tour

Saturday, October 17 3:00 p.m. - 5:50 p.m.
Maximum Number: 28 Cost: \$15

The Meyer May House, designed by Frank Lloyd Wright in 1909, is a rare gem in the world of architectural design and it is perhaps the most perfectly restored of all Wright's Prairie-style homes in the nations! This unique house was specifically designed for Mr. May, a progressive and prominent clothier who lived in the estate until his death in 1936. In 1985, Steelcase acquired the property and began a two-year restoration of the home. Complete with original furnishings and meticulously executed reproductions, the house showcases over 100 leaded glass windows and skylights, a Niedecken mural, and original Wright-designed light fixtures, carpets and linens. Don't miss this rare opportunity to enjoy a private tour of the Meyer May House and see Frank Lloyd Wright's vision come alive.

For more info visit: meyermayhouse.steelcase.com

Visit GRAM: Explore the Collection of the Grand Rapids Art Museum



All members attending the conference will receive waived admission to explore the Grand Rapids Art Museum during the run of the conference. Simply show your badge on arrival and enjoy unlimited viewing of the museum's many galleries and exhibitions.

GRAM hours:

Thursday 10:00 a.m. – 9:00 p.m.
Friday 10:00 a.m. – 5:00 p.m.
Saturday 10:00 a.m. – 5:00 p.m.
Sunday..... 12:00 p.m. – 5:00 p.m.

Prefer a guided experience?

Drop-in tours are available Friday and Saturday at 2:00 p.m. and Sunday at noon.

LEARN. ENGAGE. INSPIRE.

Tools and programs designed for educators and students

GRAM EDUCATOR HOME

GRAM educator home is an interactive 21st century online community that provides educators from all corners of the world immediate access to the resources of the Grand Rapids Art Museum.

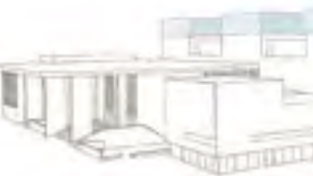
To register visit grameducatorhome.org

STUDIO WORKSHOPS

GRAMStudio Workshops are led by Museum educators and teach students artmaking techniques in a variety of media through activities inspired by works of art in the galleries.

Visit artmuseumgr.org or contact Christopher Bruce at cbruce@artmuseumgr.org or call 616.831.2928

Live Artfully



GRAM SCHOOL TOURS

School tours promote critical thinking and literacy skills while fostering an appreciation for works in the galleries. Emphasising on student centered learning and critical dialogue, tours enhance vital analytical skills.

For more information or to register visit artmuseumgr.org/learning/schools-and-educators

616.831.1000
artmuseumgr.org

GRAND RAPIDS ART MUSEUM

GRAM

Gallery Hops!

Westside Gallery Hop: The Geek Group (MakerSpace) & The Mitten Brewing Company

Friday, October 16 and
Saturday, October 17 3:00 p.m. - 5:50 p.m.
Maximum Number: 28 Cost: \$12

Come and visit the Westside of Grand Rapids! This tour will start at the MakerSpace of the Geek Group where you can see how local artisans, craftsmen, and innovators come together to share ideas and create. This makerspace hosts everything from 3D printers, welding equipment, and a woodshop to a craftspace with sewing machines and recycled and repurposed items salvaged from local businesses. You will start with a guided tour at the makerspace and then will be picked up and dropped off at the Mitten Brewing Company just down the road.

The Mitten Brewing Company is a vintage baseball-themed microbrewery and pizzeria located in historic Engine House No. 9, a Victorian-era firehouse and Grand Rapids landmark. Here, you will be introduced to one of Grand Rapids' newest breweries that is well known for its work with local non-profit organizations,

as well as "Hearts for the Arts," a local non-profit art studio that provides people of all ages and abilities with art making experiences. There will be plenty of time to snack on peanuts, order from the artisan pizza recipes, or try some of their thirteen different beer varieties, not including their collaborations with other local breweries. The Mitten is also vegetarian, vegan and gluten-free friendly, and all menu items can be changed to meet your dietary requests.

Sit back and enjoy yourself in the especially reserved upstairs tap room until the bus comes to pick you up and return you to the Amway Grand Hotel.

For more information on the GeekGroup visit: thegeekgroup.org

For More information on Mitten Brewing Company visit: www.mittenbrewing.com

Eastown Gallery Hop: LaFontsee Gallery to Brewery Vivant

Friday, October 16 3:00 p.m. - 5:50 p.m.
Maximum Number: 28 Cost: \$12

Eastown is one of Grand Rapids' hippest neighborhoods, where the area's character is reflected in an eclectic mix of specialty shops and galleries, restaurants, coffee shops, and businesses. Attendees will be dropped off for a tour at the beautiful LaFontsee Gallery. From there, this walking tour will explore the neighborhood before ending the tour at Brewery Vivant. Set into a refurbished former chapel, the pub "harkens back to an old world vision of monks in a Monastery." It is also the nation's first LEED certified commercial microbrewery. There will be time for dinner, drinks, or both if you so choose before the bus comes to pick you up and bring you back to the Amway Grand Hotel.

For more information on LaFontsee Galleries visit: www.lafontsee.us

For more information on Brewery Vivant visit: www.breweryvivant.com





MAEA Conference

Pre-Registration and Ticket Request Form

66th Annual Conference ~ October 15-18, 2015
Amway Grand Plaza Hotel, Grand Rapids, MI

Deadline for Amway Grand Plaza Hotel reservations is September 14, 2015, so register early!

Instructions

- Use a separate form for each person
- Photocopy a completed form for your records
- Register early to avoid disappointment
- Must be postmarked by September 30, 2015
- All receipts from both snail mail and online registration are emailed. Watch for emails from: conferenceregistrar@miarted.org
- You must be a member to attend
- When paying registration online with PayPal or credit card, there is a 3% fee charged.
- Questions?
Margaret Black: MAEAregistrar@gmail.com or 989-731-1707
Jane Inhulsen: inhul4@comcast.net or 810-603-0615

⇒ You may also register online at: <http://miarted.org/data/> ⇐

Step 1: Participant - You must be an MAEA member to attend

IMPORTANT: YOU MAY NOW INCLUDE YOUR NEW/RENEWED MEMBERSHIP FEE AS PART OF YOUR REGISTRATION CHECK. IF YOU NEED TO RENEW, OR BECOME A MEMBER, FILL OUT THE MEMBERSHIP FORM IN THIS EDITION, AND THEN ADD THE TOTAL TO STEP 7 OF THIS CONFERENCE REGISTRATION FORM. IF YOU ADD A MEMBERSHIP FEE, YOU MUST INCLUDE THE MEMBERSHIP FORM WHEN YOU MAIL IN THIS CONFERENCE REGISTRATION.

Name: _____ Workshop Presenter
 Handicapped accommodation needed

Address: _____

City/St./Zip: _____

Phone: _____

Email: _____

Membership (check one):
 New Member
 Renewing Member (expiration date before 10/18/15)
 Current Member (expiration date after 10/18/15)

Member ID: _____

Expiration Date: _____

Region #: _____

Step 2: Conference Registration Fee

- Active/Renewing/New Member (\$165)
- Retired (\$85)
- Spouse (\$100) (Children must also register for conference and for meals)
- Full-Time Student (\$90)

Step 2: Conference Registration Fee Total \$ _____

Step 3: Tickets

A) Meals (Mark All Applicable)

<p>Thursday</p> <p>UICA - Frames, Friends, and Fun Reception: _____ @ \$4 = \$ _____</p> <p>Friday</p> <p>Breakfast: Division Breakfast Buffet _____ @ \$10 = \$ _____</p> <p>Lunch: (Administrators Lunch as well as Retirees and General) Plated Lunch Chicken _____ @ \$15 = \$ _____ Plated Lunch Vegan _____ @ \$15 = \$ _____</p> <p>Failure:Lab _____ @ \$20 = \$ _____</p>	<p>Saturday</p> <p>Breakfast: Business Breakfast _____ @ no fee</p> <p>Lunch: Regional Lunch Southwestern Buffet _____ @ \$15 = \$ _____ Student Lunch Southwestern Buffet _____ @ \$5 = \$ _____</p> <p>Dinner: Awards Banquet Chicken & Salmon Duo Plate _____ @ \$35 = \$ _____ Awards Banquet Vegan _____ @ \$35 = \$ _____</p> <p>Gala: Tableau Vivant _____ @ \$4 = \$ _____</p> <p>Sunday</p> <p>Breakfast: Breakfast Buffet _____ @ \$10 = \$ _____</p>
---	--

Step 3A: Meals Total (all 4 days) \$ _____

B) TICKETED ONLY: Workshops/Tours (mark all applicable)

Silk Scarf Fundraiser: Regular _____ @ \$10 = \$ _____ Infinity _____ @ \$15 = \$ _____

Comic-Con Tickets: One Day Pass _____ @ \$10 = \$ _____ Weekend Pass _____ @ \$20 = \$ _____

Workshop # _____ Fee \$ _____	Workshop # _____ Fee \$ _____
Workshop # _____ Fee \$ _____	Workshop # _____ Fee \$ _____
Workshop # _____ Fee \$ _____	Workshop # _____ Fee \$ _____
Workshop # _____ Fee \$ _____	Workshop # _____ Fee \$ _____
Workshop # _____ Fee \$ _____	Workshop # _____ Fee \$ _____
Workshop # _____ Fee \$ _____	Workshop # _____ Fee \$ _____

Step 3B: Tickets Total \$ _____

Onsite Rates (eff. September 30, 2015)

- **Onsite rates:** Member \$235, Retired \$160, Spouse \$175, Full-Time Student \$150

Please note:

All Vegan meal options are also gluten free.

- Meals for children can be made by special arrangements and for the cost of hotel meal.
- All meal events require tickets.
- Indicate if attending and total cost.
- Full-time students must be defined as full-time by the schools they attend.
- For special dietary needs and meals for children, please contact the registrar at: **989-731-1707** or MAEAregistrar@gmail.com
- Plated meals will be served within the first 15 minutes of the time designated in the program. Late meals will not be provided.



- Scheduling two ticket sessions at the same time will cancel each other out.
- Do not list non-ticketed workshops.
- Attend all other non-ticketed sessions on a first come basis. They are limited only by room capacity or the request of the presenter as noted in program.
- **Register early!**

- Continued on next page -

Instructions

Step 4: Donation

- I wish to make a donation to the State Conference Student Sponsorship Award
 \$1 \$3 \$5 \$10 \$20 other \$ _____ Not this year

Step 4: Donation Total \$ _____

Step 5: SCECHs

- Yes, I would like to pre-register for SCECHs for \$20.00

Step 5: SCECHs Total \$ _____

Step 6: Membership Process

Members may now write one check for membership and conference registration. You must include your completed membership form as well as your conference registration form, if you choose to pay in one check.

Before September 30, 2015, you may renew or become a new member by going to www.miarted.org, click on JOIN/RENEW, then click on NAEA/MAEA MEMBERSHIP NEW/RENEW.

- ♦ After September 30, 2015, membership must be snail mailed to Christopher Bruce.

Membership fees are in addition to registration fees.

No REFUND/REQUESTS after September 30, 2015

- ♦ Refund requests must be made in writing. Emails are not accepted.

Step 7: Payment Summary

Total from Step 2: Conference Registration Fee	\$ _____
Total from Step 3A: Meals	\$ _____
Total from Step 3B: Tickets	\$ _____
Total from Step 4: Donation	\$ _____
Total from Step 5: SCECH's \$20	\$ _____
Total from Step 6: Membership	\$ _____
[Total from NAEA/MAEA membership form added here]	

Final Conference Registration Fee Total: \$ _____

All receipts from both snail mail and online registration are emailed. Watch for emails from:
conferenceregistrar@miarted.org

- Questions? Contact Melissa Hronkin: m_hronkin@hotmail.com
- Pick up your SCECH packet onsite, near the registration area
- Before September 30 you may renew, or join at www.miarted.org (Join/Renew > Become a Member)
- After September 30 membership must be snail mailed to: Christopher Bruce
- Mail:
 - Membership Form
 - Membership Check
- To:
Christopher Bruce
Membership Secretary
2630 Northvale Dr NE - Apt 102
Grand Rapids MI 49525

- Make Conference Registration Check Payable to:
MAEA 2015 Conference
- Conference Registration check may be for steps 2-6, if new/renewing with registration.
- Mail:
 - Registration Form
 - Membership New/Renewed Form (if applicable)
- Snail mail registrations to:
Margaret Black, MAEA Registrar
PO Box 316
Waters, MI 49797

NAEA/MAEA Strict Registration Procedures

PAYMENT MUST BE INCLUDED to process form & reserve sessions

- Those without payment will not be processed.
- A confirmation/receipt will be emailed to all registrations that are clearly postmarked on or before September 30, 2015. All other receipts, without an email address will be given out at the conference registration site.
- You will receive confirmation from conferenceregistrar@miarted.org Look for this confirmation and print a copy.

DO NOT MAIL any forms after September 30, 2015

- Those postmarked after September 30, 2015 are considered LATE and will be processed in order of arrival before the conference opens based on workshops available.
- Onsite rates will be effective as of September 30, 2015.

You may wish to REGISTER EARLY & have your district reimburse you later to avoid conflicts or closed sessions.

Questions? Email Jane Inhulsen: inhul4@comcast.net or Margaret Black: MAEAregistrar@gmail.com



MAEA Conference

2015 Special Conference Registration Form
 66th Annual Conference ~ October 15-18, 2015
 Amway Grand Plaza Hotel, Grand Rapids, MI

⇒ You may also register online at: <http://miarted.org/data/> ⇐

All special guests must complete this Contact Information section before sending this to the MAEA 2015 Conference Registrar, Margaret Black.

This form is for you if you are...

Your Contact Info

If you are any of these Special People, please check the appropriate boxes below and fill out the contact information to the right.

Then follow the instructions for mailing in your requests.

Name: _____
 Title: _____
 District: _____
 Address: _____

 City/St./Zip: _____
 Phone: _____
 Email: _____

1. A **Designated Guest** of award recipient _____ (Awardee)
 (*One Designated Guest per Awardee – receives one free ticket*)

Saturday Meal Selection: Awards Banquet Chicken & Salmon Duo Plate _____
 Awards Banquet Vegan _____

2. A **Guest** of an award recipient _____ (Awardee)

Saturday Meal Selection: Awards Banquet Chicken & Salmon Duo Plate _____ @ \$35 = \$ _____
 Awards Banquet Vegan _____ @ \$35 = \$ _____

3. A **School Administrator** with _____ (Art Educator)

Friday Meal Selection Administrators' Lunch: Plated Lunch Chicken _____ @ \$10 = \$ _____
 Plated Lunch Vegan _____ @ \$10 = \$ _____

4. A **Spouse** of an attending member _____ (Member)

Spouse Registration Fee _____ \$100

Meal Selections (Mark all applicable):

Thursday

UICA - Frames, Friends, and Fun Reception:
 _____ @ \$4 = \$ _____

Friday

Breakfast:
 Division Breakfast Buffet _____ @ \$15 = \$ _____

Lunch: Plated Lunch Chicken _____ @ \$15 = \$ _____
 Plated Lunch Vegan _____ @ \$15 = \$ _____

Failure:Lab _____ @ \$20 = _____

Saturday

Breakfast:
 Business Breakfast _____ @ \$15 = \$ _____

Lunch: Regional Lunch Southwestern
 Buffet _____ @ \$15 = \$ _____

Dinner:
 Awards Banquet Chicken &
 Salmon Duo Plate _____ @ \$35 = \$ _____
 Awards Banquet Vegan _____ @ \$35 = \$ _____

Gala:
 Tableau Vivant _____ @ \$4 = \$ _____

Sunday

Breakfast:
 Breakfast Buffet _____ @ \$15 = \$ _____

Spouse Payment Summary

Spousal Registration Fee \$ _____

Total from Meals \$ _____

Final Conference Registration Cost:
 \$ _____

Instructions

Enclose this form and payment of total amount.

Make payable to:
MAEA 2015 Conference

Send to:
Margaret Black, MAEA Bookkeeper
PO Box 316
Waters, MI 49797

Questions? MAEARegistrar@gmail.com

Your Total Fee: \$ _____

Please note:

All Vegan meal options are also gluten free.

- Meals for children can be made by special arrangements and for the cost of hotel meal.
- All meal events require tickets.
- Indicate if attending and total cost.
- For special dietary needs and meals for children, please contact the registrar at: **989-731-1707** or MAEARegistrar@gmail.com
- Plated meals will be served within the first 15 minutes of the time designated in the program. Late meals will not be provided.

Conference Information and Policy

Online Registration is open at miarted.org and will close September 30, 2015.

You must be a member of NAEA/MAEA and pay a conference registration fee to attend this conference, unless you are a guest. [See Special Registration guidelines.]

Membership

You must be a member of NAEA/MAEA to attend this conference. If you are not, please complete the membership form on the back page of this edition. You may also go to the MAEA website www.miarted.org, click on Join/Renew and follow the directions. If you are joining after the deadline listed on the conference registration form, then you must MAIL this application and your check to our Membership Secretary: *Christopher Bruce*

bruceachristopher@gmail.com
2630 Northvale Drive NE – Apt. 102
Grand Rapids, MI 49525

If you are a new or renewing member, your membership fee can now be included in your conference registration fee. Please remember to fill out and include the membership application.

Pre-Registration Notification

All members have the option of registering through the traditional mail process or registering online at <http://miarted.org/data/>. The online registration information includes TICKETED or LIMITED sessions only. Non-ticketed sessions do not require pre-registration.

Everyone pre-registering with a postmark not later than September 30, 2015 will be emailed a registration receipt. You must include your email in the registration, either online or mailed. If you do not include an email where you can receive the receipt, then you will receive your receipt at the conference when you pick up your registration materials. All receipts from both snail mail and online registration are emailed. Watch for emails from: *conference@miarted.org*. **YOU MUST PUT THIS EMAIL ADDRESS IN YOUR ADDRESS BOOK TO RECEIVE THE EMAILED RECEIPT. NO RECEIPTS WILL BE MAILED.**

Note: Most ticketed workshops will sell out very quickly. Registrations postmarked after the pre-registration deadline of September 30, 2015 will be handled in order of their arrival with receipts handed out at the conference registration site.

Pre-Registration Payment

Payment is required at the time of both snail mail and online registration. Several options are available: check sent with snail mail registration, or Pay Pal or with a credit card with online registration. Registration payment onsite will be \$75 higher. There will be no admission to the conference without complete payment. If your school district or university plans to pay your registration, and does not make payment prior to onsite check in, you will be required to pay the entire fee to participate in the conference. It is your responsibility to then seek reimbursement from your district or university. If payment is not received by September 30, 2015 your pre-registration will be cancelled. Any ticketed sessions you have reserved will then become available for onsite registration.

If there are extenuating circumstances, please contact Jane Inhulsen at *inhul4@comcast.net* or Margaret Black at *MAEA@miarted.org* no later than the close of online registration.

Special Registration

A Special Registration form for School Administrators, guests of award recipients, and guests of members is provided in this edition as well as online. These special guests may fill out the Special Registration form in this edition or online. This form will allow them to reserve tickets for Administrators' Luncheon, the Awards Banquet as well as a meal selection for the same, or a ticket for the Saturday night Tableau Vivant Gala.

Spouses who are attending those meals or events listed above should register as a Special Guest.

Registration Hours

Thursday: 3:00 p.m. – 7:30 p.m.
Friday: 7:30 a.m. – 7:30 p.m.
Saturday: 8:30 a.m. – 2:00 p.m.

Onsite Registration Location

Registration may be completed onsite at the Amway Grand Plaza Hotel Level 2 Concourse upon arrival. However, the onsite registration fee is \$75 higher in all member categories. This also means standing in line longer with less chance of obtaining desired ticketed workshops.

Sessions

Some special guest artists, workshops, tours and events have restrictions. Please note: TICKETED sessions in the program are due to fees, room size and presenter requests. Non-ticketed sessions will be a first come, first served at the door of the session and should NOT be listed on your registration form. Actual TICKETS are provided in your onsite registration envelope for tours, meals and medleys. Class lists are provided for the session presenter and for all other ticketed sessions.

Nametags need to be worn at all times. The nametags give you access to the Vendor area, workshops, tours and meals. Tickets for ticketed events must be presented at the time of entry.

Refunds

It is NAEA/MAEA Policy that all requests for refunds are submitted in writing, stating the reason that you expect a refund. A \$50 processing fee is charged for all cancellations [regardless of the date requested].

All TICKETED events are non-refundable. Executive Board will consider refund requests for dire circumstances, excluding the \$50 Processing fee and non-refundable events.

Conference Materials for Participants

Registration will be held at the Amway Grand Plaza Hotel Level 2 Concourse. All materials may be picked up at the registration site. Look for all open and cancelled workshop events in this area as well.

Conference nametags must be worn everywhere! This includes the Vendor area, workshops, meals, and tours. You will be denied access without your nametag!

Conference Materials for Presenters

Presenters must check in at the presenter registration area, located near the conference registration in the Amway Grand Plaza Hotel Level 2 Concourse. You will pick up workshop information and event materials, presenter information and gift bag there.

Important Advisory

Presenters graciously share their ideas and time for your benefit. Presenters have enough materials on hand for the limit listed in their session information. Please respect these limits. Arrive on time. Attend the entire session. Display professional and courteous behavior at all times.

Student Classification means FULL-TIME students.

Open Meeting Policy

NAEA/MAEA policy states all sessions held within the framework of its conference are open to all NAEA/MAEA members who are registered for the conference. The only exception is for ticketed functions, including meals, workshops or receptions that may be sponsored by other groups.

Tax Deduction

To qualify for a tax deduction, a person must be registered for the conference. Treasury regulation No.1.1625 permits income tax deduction for educational expenses [registration fees and cost of travel, meals, and lodging] undertaken to:

1. Maintain or improve skills required in one's employment or other or business;
OR
2. To meet express requirements of an employer or law imposed as a condition to retention of employment, job status, or rate of compensation. [IRS Publication #508, U.S. Government printing office] Please retain your pre-registration confirmation and receipts for your records and reimbursement from your district.



Jane Inhulsen
Executive Secretary
8149 Green Valley
Grand Blanc, MI 48439

Return Service Requested

PRSRT STD
U.S. POSTAGE
PAID
ALLIED MEDIA

NAEA/MAEA Membership Application

Membership with MAEA is membership to both NAEA and MAEA:

Mail to: MAEA Membership Chair: Christopher Bruce, 2630 Northvale Dr. NE Apt. 102, Grand Rapids, MI 49525
-OR- Membership online: www.miarted.org click on All Members Services, then click on Become a Member

Please Print All Information Below:

Form fields for personal information: Name, Address, City/St./Zip, Home Phone, Email, MI County, School District, Work/Fax.

Membership 104/204

Form fields for membership details: Categories (Active, Associate, Retired, etc.), Dues, School, Graduation Date, Institutional, SUB TOTAL, Subscription Option, TOTAL, Students.

Please check ONE professional level where you spend over 50% of your professional time:

- Elementary, Middle Level, Secondary, Museum, Higher Ed, Supervision/Administration, Full Time Student, Retired Member

Payment Information

Form fields for payment: Check Enclosed, Charge (VISA, MasterCard), Credit Card Number, Expiration Date, 3-Digit Security Code, Signature, Charge by phone.

Membership dues include \$25 for a membership subscription to Art Education and \$15 for a membership subscription to NAEA News. A separate rate is established for non-member subscriptions.